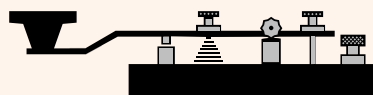


NAQCC NEWS

ISSUE 312 • JUNE 2024



KEY CLICKS

• IN THIS ISSUE

The Prez Sez... there are lots of events and a much-improved treasury report; Member Polls; A bit of QSO Party Action; A report on the state of the Spartan Sprint; A collapsible Letter Challenge; A Prefix Award; John VE3IPS takes a portable antenna on the road; A double helping of Sprints; Net reports; The WFL Chapter returns to Eagle Point Park; Soapboxes; and more.

• A LIGHT-BEAM QSO IN 1944

The ever-entertaining SolderSmoke blog dug up this great WWII story of a ham stuck on a Liberty ship in New Guinea finding an old buddy across the bay with his trusty TL-122 flashlight and Morse code.

<https://soldersmoke.blogspot.com/2024/05/a-light-beam-qso-in-hollandia-christmas.html>



• 64TH ALL-ASIAN CW CONTEST - JUNE 17 & 18

If you're a serious contester, DXer, or just want to take advantage of the sunspot peak and get some more countries in the log, here's a great chance: https://www.jarl.org/English/4_Library/A-4-3_Contests/2023AA_rule.htm

• HELP MAKE A NEWSLETTER

Your monthly news is cobbled together using Scribus and various other open-source tools. If you know how to do any of that—or want to learn—I could sure use the help. brentWT4U@naqcc.radio

• YOUR NEWSLETTER SUBMISSIONS NEEDED

Please take a few minutes to tell us about your latest excursion, that thing you built, your favorite rig, or something funny. As long as it relates to QRP CW. Send it to Paul KD2MX: kd2mx@arrl.net

• UPDATE YOUR MEMBER INFO

Any time you change your QTH, email, or callsign, you can update your member info with a simple online form. First, check your information at <http://naqcc.info/memberlist.php> to make sure the rest of the fields are correct and then fill out the member update form here:

http://naqcc.info/member_updates.html

IN THIS ISSUE

Key Clicks	1
Prez Sez	2
Member Polls	3
QSO Party Challenge	4
Spartan Sprint	6
Letter Challenge	8
Awards	11
GRA-7350T Portable Antenna Review	12
Sprints	16
Nets	19
Chapter Reports	21
Sponsors	24
About The NAQCC	25
Contacts	26

THE PREZ SEZ...

As I write these notes we are planning and packing for our annual trek to Maine for some much needed R&R, so allow me a few extra days to respond to your emails, Internet is sketchy up there.

JUNE IS BUSTING OUT ALL OVER WITH NAQCC EVENTS!

June Monthly Sprint #236

Tuesday June 11 8:30-10:30P EDT

which also is:

Wednesday June 12 0030-0230Z

June 2024 QRP/CW mW Sprint

Tuesday June 18 8:30-10:30P EDT

which also is:

Wednesday June 19 0030-0230Z

Sprint bands / frequencies:

80m 3555 – 3565 kHz

(Be courteous to FISTS operating on 3558 kHz)

40m – 7030-7045 kHz

20m – 14059-14065 kHz

THE NAQCC JUNE MONTHLY CHALLENGE

Controlled Demolition

91 characters this month, let's hammer it!

THE ARRL FIELD DAY CHALLENGE

Only 12 "words" so it should be easy, HI HI

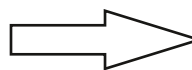
Time Frame:As in the ARRL FD Rules

TREASURY REPORT

Things are looking much better!! Thank You for your response.

As of 5/31 we have \$1,011 towards our prize goal for the 20th Anniversary Sprint in October. That's about two thirds of the way toward the goal! The May response was certainly uplifting.

5/31/2024



Donation amounts do not have to be large, \$5-10 or more would be great. Most folks with a checking account can have their bank send a check postage free, no cost to you or NAQCC.

Also an option (not my favorite) is to send to me through my Paypal account (jleahy00@yahoo.com). If you choose this method PLEASE be sure that you indicate NAQCC and your membership number.

please mail your check payable to:

North American QRP CW Club, Inc
35 Heather Circle
Cave Spring, GA 30124

Until next time, enjoy mowing your flowers lawn and remember to fly the flag on Flag Day and be kind to your XYL on Fathers Day.

72/73!

John KK4ITX #7249

NAQCC President

A little bit of QRP on a wire goes a long way!



MEMBER POLLS

JUNE POLL

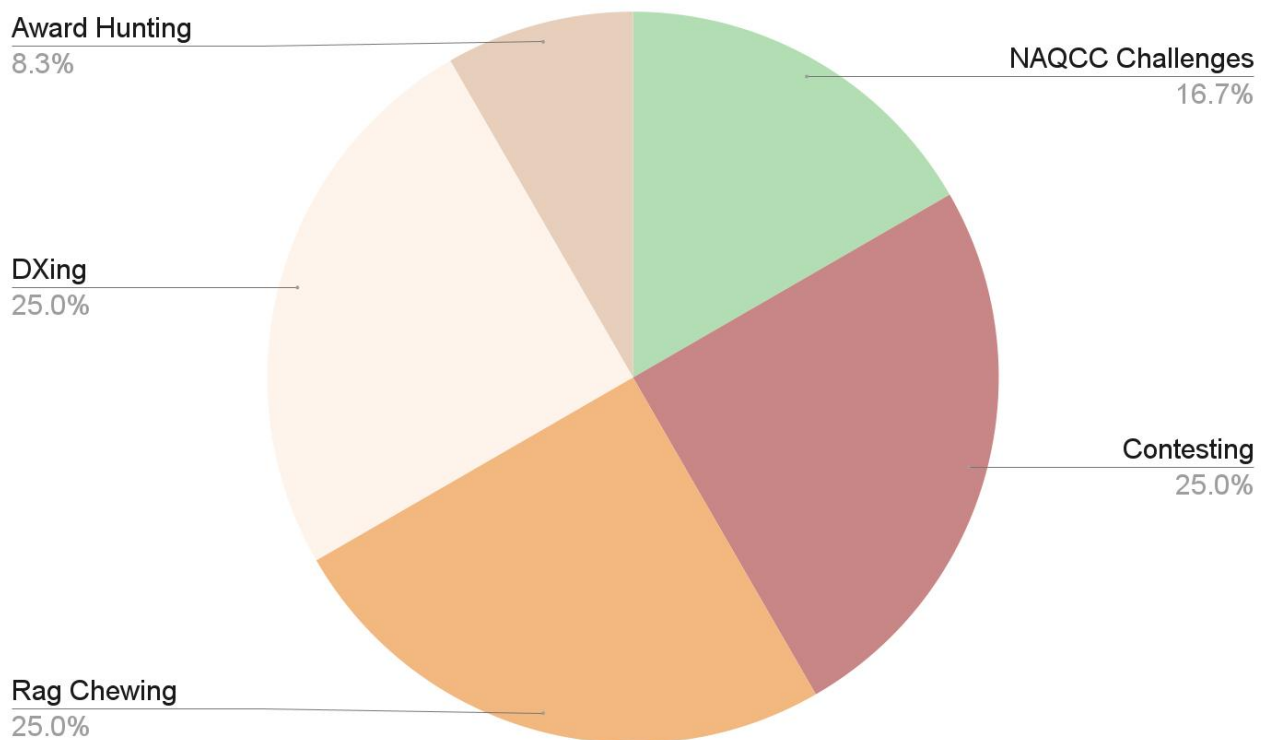
With the Solar Activities starting to get exciting, are you going to spend more time on 10, 12, & 15 meters?

Let us know at http://naqcc.info/poll_new.html

MAY POLL RESULTS

What are your favorite on-air QRP activities?

http://www.naqcc.info/main_past_polls.html



POLL SOAPBOX

John KK4ITX - The Monthly Challenge has kept me involved with QRP on a regular basis and has led to QRP a Day, POTA activities and near completion of the other NAQCC Alphabet Challenges.

Ernie N2DGQ - I would have to say POTA is my favorite QRP activity, followed by the various QSO parties

NAQCC STATE QSO PARTY CHALLENGE

BY DON VE3DQN #5846

SUMMER SLOW-DOWN

Only one more State QSO Party scheduled for June, then one in July. This should give all of us time for Field Day or POTA operations or simply family travel. Don't overlook the WVQP in mid-June. My notes tell me to expect quite a bit of activity. It may not be one of the Top-10 SQPs, but still gives opportunity to rack up points.

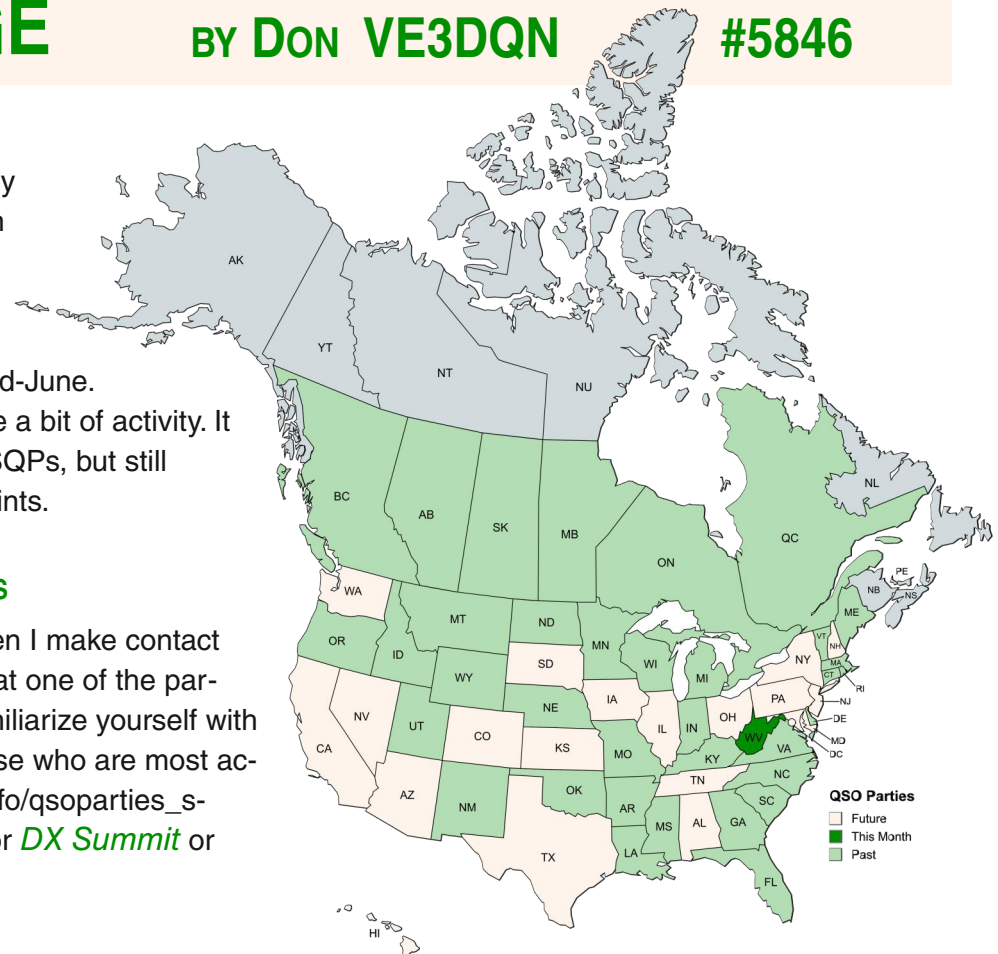
ZONE IN ON NAQCC MEMBERS

I always get a special buzz when I make contact with a fellow NAQCC member at one of the parties. (SQ Parties, that is :-). Familiarize yourself with the callsigns and names of those who are most active in the SQPs http://naqcc.info/qsoparties_scores.html. And look on *RBN* or *DX Summit* or

LEADERBOARD

See the full list at http://naqcc.info/qsoparties_scores.html

Member	Mult	QSOs	Score	Award	Pace
Will NQ2W #4839	27	947	25,569	Platinum	77,479
Chris KU4A #1960	26	901	23,426	Gold	70,985
Steve NI8W #11335	27	754	20,358	Gold	61,688
Mike W7LG #10391	24	605	14,520	Gold	43,998
Ron VE3SIF #10033	20	623	12,460	Gold	37,756
Brent WT4U #9019	26	370	9,620	Silver	29,150
Rick KY0Q #9647	20	468	9,360	Silver	28,362
Kevin NN3E #9851	23	337	7,751	Silver	23,487
Bob N2EIM #10373	20	376	7,520	Silver	22,787
Anthony K8ZT #412	20	290	5,800	Silver	17,575
Marty N9SE #7425	14	414	5,796	Silver	17,563
Kevin KE3V #855	21	270	5,670	Silver	17,181
Don VE3DQN #5846	21	259	5,439	Silver	16,481
Ernie N2DGQ #11090	15	323	4,845	Bronze	14,681
Dave AC7FF #7618	18	258	4,644	Bronze	14,072
Jeff N0MII #7878	12	315	3,780	Bronze	11,454
Ray WB0SMZ #3889	21	163	3,423	Bronze	10,372
Stan K3PW #9637	24	122	2,928	Bronze	8,872
Chris WB9G #6311	12	172	2,064	Bronze	6,254



other spotting sites for when they're on the air. And if you make contact, you can add a quick "GL Steve" or "TNX Ron" to the exchange without disturbing their rhythm.

DIAMOND HUNTERS

Speaking of the scoreboard, have you noticed that two of our members have gained the multiplier in all 27 of the SQPs held this year so far? And that 4 have already achieved the Gold level, and 1 Platinum? If they score big on some of this fall's SQPs they still have a chance of achieving the highest level, the Diamond award, as two of our fellow NAQCCers achieved last year.

Upcoming QSO Parties					
State	Times	IN	Out	Freqs	Links
West Virginia	Jun 15 1600Z to June 16 0400Z	RST County	RST ST	-	rules
At press time the WV 2024 rules were not yet posted					

QSO PARTY SOAPBOX SAMPLER

Steve NI8W #11335 - ARQP started slowly with only a few AR stations heard but a lot of stations replying. Eventually things calmed down, and I could get through. A couple multiple-county stations, with very good ops, made for a lot of multipliers. Despite other plans for the afternoon and evening, I was able to beat my score from last year.

Will NQ2W #4839 - ARQP - Spaceweather wasn't conducive for propagation between here and AR. It was slow going throughout the party. I made about half as many QSOs as I made last year. I'm happy the AR ops that I contacted were able to hear me. Part of the fun is the challenge.

Chris KU4A #1960 - It was kind of a "barbell" for me. The bands were good the first 2-3 hours, then horrible for awhile, then good again the last 2-3 hours. I'm not sure if the slump was the typical summer mid-day propagation, or there was a solar flare involved. In any event, I ended up with almost the exact same QSO count as last year.

Don VE3DQN #5846 - Propagation on Saturday afternoon on 20m was a wipe-out for me. I faintly heard a few KY stations. They couldn't hear me. However, NT4HI, the warship museum station in Charleston SC was blasting in at 599+. Go figure. I finally got one KY station on 40m in the evening and no more because I'd miscalculated the party end time :(I now have 4 QSO parties where I got only one QSO.

Will NQ2W #4839 - I knew I wasn't going to be home for this one and I debated whether or not to bring a radio. The radio won so I packed up my K1, 40m EFHW, and other accessories and headed out to my destination. I was in the Rochester, NY area and had a lot less time to operate than I thought...that's a whole different story. I started to set up my station at about 2300Z with only 2 hours left in the KYQP. With the EFHW up at about 20 feet, I made my 1st QSO at 2326Z, the 2nd at 2327Z...cool...relax....make a few more. Ended up with 8 in the log, including KU4A and WE5P - both QRPers - and had the station down by the end of the party. Lots of fun and the grandkids gave me high fives for getting 27 for 27!

See the full soapbox at http://naqcc.info/qsoparties_soapbox.html



THE ADVENTURE RADIO SOCIETY

SPARTAN SPRINT

BY JODY K3JZD #7936

Richard Fisher KI6AN, co-founder of *The Adventure Radio Society*, has managed the annual *Flight of the Bumblebees* and the monthly Spartan Sprint for many years. Both are QRP CW events. I'm sure that many NAQCC members have participated in one or both of them. As you know, QRP CW works quite well during QRP CW events where everyone is listening for weak signals.

KEEPING IT GOING

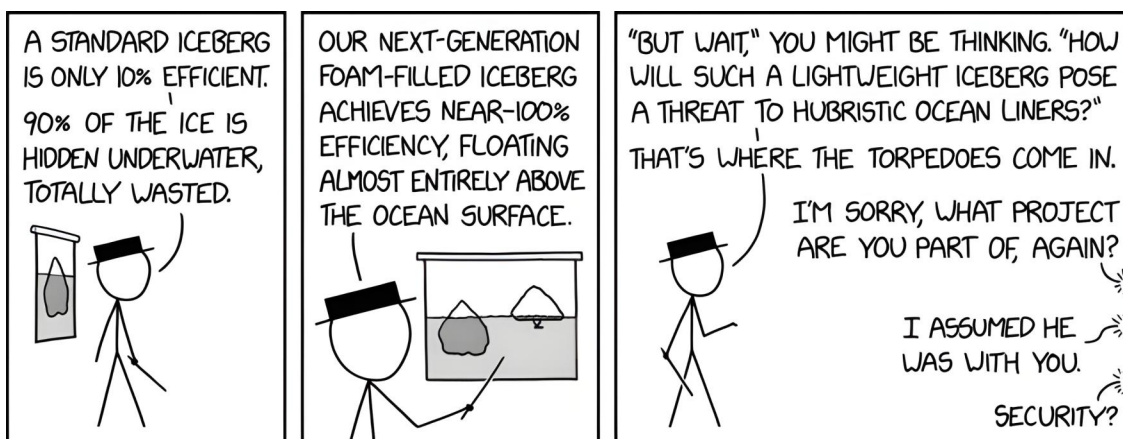
However, as it often happens as the years go by, Richard's health has deteriorated and he is no longer able to manage these events. As far as I know, no one has stepped up to take over either of these QRP CW events and the corresponding web pages. I cannot speak for the future of the annual Flight of the Bumblebees event. However, an effort has been made to keep the monthly Spartan Sprint going autonomously without a manager. Bruce Horn – WA7BMN has graciously added Spartan Sprint to his do-it-yourself 3830scores.com logging website.

COBWEBS

Having a place to log the Spartan Sprint is half of the battle. Publicizing the Spartan Sprint event is the other half. And that is now difficult. Richard's The Adventure Radio Society Spartan Sprint web pages have been static since January. Bruce Horn's WA7BNM Contest Calendar now points to what is now a somewhat out of date Adventure Radio Society web page for most of the Spartan Sprint rules. And it is not clear how long that Adventure Radio Society web site will remain up.

YOU CAN HELP

I'm not stepping up to provide management of the Spartan Sprint. However, I did create an updated version of the Spartan Sprint general information and rules that I would like to share with the NAQCC members. The Spartan Sprint is a "good for QRP CW" event and I hope NAQCC members continue to support it.



WHAT IS AN ARS SPARTAN SPRINT AND HOW CAN I PARTICIPATE?

The Adventure Radio Society Spartan Sprint is a two hour casual QRP contest that is held on the first Monday of every month to encourage QRP operators to get on and go to somewhere near the standard QRP frequencies on the 80-40-20-15-10 Meter bands for an evening of fun. It is open to all QRP CW operators – there is not any membership requirement. Operating portable and/or using lightweight minimalist (spartan) equipment is encouraged, but is not required.

FIRST MONDAY OF THE MONTH

The contest period for each time zone is:

EASTERN 8:00 p.m. to 10 p.m. Local
 CENTRAL 7:00 p.m. to 9 p.m. Local
 MOUNTAIN 6:00 p.m. to 8 p.m. Local
 PACIFIC 5:00 p.m. to 7 p.m. Local

Does not shift for DST – it is always at these local times :

(UTC STANDARD TIME 0100Z to 0300Z)
 (UTC DAYLIGHT SAVINGS TIME 0000Z to 0200Z)

EXCHANGE

- Your call sign
- Your state or province
- Your Power output

SCORING

Scoring is somewhat unique - score is calculated based on [Number of Contacts] / [Station Weight].

Working the same station on two bands counts as two contacts.

STATION WEIGHT

The weight of your station consists of everything except your antenna and feed line. If your station includes your home-based rig, antenna tuner, DC power supply, heavy paddle or bug - obviously you are not lightweight - simply report your weight as 30 lbs. (That is the default weight for the Tubby division.)

REPORTING

To report your results, go to 3830scores.com, and select the 'ARS Spartan Sprint' for this month.

Soapbox comments may include your power, equipment, antennas, band conditions, outdoor experiences, and anything else.

Scores will be calculated for both the Skinny and Tubby divisions.

We look forward to seeing you in the next Spartan Sprint.

73,

Jody – K3JZD

on behalf of
 Richard Fisher, KI6SN
 Co-founder, The Adventure Radio
 Society

https://www.nelis.net/K3JZD/SpartanSprint/What_is_a_Spartan_Sprint_and_How_Do_I_Participate.htm



NAQCC CHALLENGE

BY GARY K1YAN #2365

THIS MONTH'S LETTER CHALLENGE: CONTROLLED DEMOLITION

Some things are just fascinating to watch. Seeing a building or structure being demolished as it collapses into a pile of rubble has to be right up there on the list. A controlled demolition is done when it is not desirable to bring down the structure using standard demolition methods. The site may be too congested to allow access by normal demolition equipment. It may not be possible to keep the site isolated for the time required for a normal teardown due to traffic or other reasons. It is also possible that it is more economical to implode the structure.

CAREFUL EXPLOSIONS

A controlled demolition uses explosives to bring down the structure being removed, but not with just one big blast. It is the result of a lot of planning, preparing the structure by removing supporting parts of it and finally setting off a series of small explosions. The explosions remove key supporting elements and allow gravity to cause a collapse from a massive structural failure.

So how do you do a controlled demolition? It begins with a very detailed engineering study of the structure you want to take down. The goal is to understand how the structure was designed and con-



structed and what will happen as various supporting parts are removed. The idea is first to determine what to remove to leave the structure weakened and ready for a controlled collapse, but safe to enter and work in.

SCIENCE AND ART

Next comes the part that is a mix of science and art. After determining in what direction and in what sequence a collapse should occur, locations for the required explosives are decided. Size of the charge, exactly how it will be installed and in what sequence all the charges will be exploded determine how the collapse will happen. Part of the planning also considers such things as hazardous materials that need to be dealt with. A cloud of asbestos, lead or mercury from fluorescent lights floating into the sky has to be avoided. For some small structures the planning may only take a week or two while larger, more complex jobs may take six months or more.

The folks who do this kind of work know what they are doing and stage quite a display on demolition day. Don't miss it if they come to your area. It is worth making the effort to see the show in person.

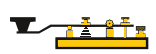
WORDS

- CONTROLLED DEMOLITION
- STRUCTURAL STUDY
- REMOVE SUPPORT STRUCTURES
- EXPLOSIVE CHARGE
- SEQUENCE DETONATION

CHALLENGE TRACKER

A	C	D	E	G	H	I	L	M	N	O	P	Q	R	S	T	U	V	X	Y

X Every time you work a new station this month, mark off the lowest box under each letter of the call to track your progress and see what letters you still need. You can download a printable version of this month's tracker at: http://naqcc.info/challenge_tracker.pdf

 Entering the Challenges earns you participation points so you're eligible for the best prizes in the annual anniversary drawings.

SUBMITTING YOUR ENTRY

The easiest way is to use the great tool hosted by Robby WB5RVZ. Create an account, choose this month's challenge, and paste in all the eligible calls you worked. It will apply the letters, tell you what you're missing, and fill out the email for you. <http://naqcc.wb5rvz.org>

If you want to do it by hand, or got some but not all of the words and want to pick up a participation point, send an email to charlie.wilber@gmail.com

Subject: (your call) NAQCC (month year) Challenge

Body: your call:
 word1 - call1 call2 call3
 word2 - call1 call2 call3

RULES:

Just make ALL the words from calls of stations you work subject to the General Challenge Rules. (Any spaces in the phrases should be ignored. For example the challenge phrase "INVERTED V ANTENNA" should be treated as if it is the single word "INVERTEDVANTENNA.")

Each letter in a callsign you work during the month can be used **twice** to complete the challenge words. Complete rules, information, and a helpful tutorial on how to organize your work for an alphabet challenge along with detailed general rules and submission instructions can be found at http://naqcc.info/challenges_rules.html

NEXT MONTH'S CHALLENGE

The sky's not falling, it's next month's Golden Knights Challenge!

<http://naqcc.info/challenges/challenges202407.html>

LAST MONTH'S CHALLENGES

The deadline for submissions for the Old Baseball Rules letter challenge is still a few days away. You can see what has been submitted so far at <http://www.naqcc.info/challenges/challenges202405.html> and final results will be posted on that page shortly after the 10th of the month.

CHALLENGE HONOR ROLL

We honor the following members for their outstanding participation over the years in our monthly challenges. Exact counts can be seen at http://naqcc.info/challenges_schedule.html.

Number of Challenges	Members
25+	AC2C KC5F KU4A WT4U W2ITT N1JI NN9K K9OSC KA5PVB KD0V AB9BZ N2EIM NN3E K14IO WY3H ND9M W1BLU WY7N KI8I VE3HUR W4LSV AD0YM ON7DQ N0IPA N9WVM N1LU KD2MX K4KBL W4KAC
50+	VE3DQN KJ4R VE3FUJ NF1U KB1M N4OW WB4OMM N9SE DK1VD G3JFS
75+	PA9CW W3IQ WA2FBN PA0XAW WI5H AK3X AH6AX
100+	K1IEE
125+	K1YAN
150+	W2JEK K3WWP
175+	N8XMS

CHALLENGE SOAPBOX SAMPLER

VE3KZ: Tough conditions. Almost all contacts on 20 and 40. One on 30m and one on 15m. True QRP challenge! 73 Bob

PG4I: This time it took a while getting all the 'T's together. The special event callsigns help a lot... Many letters and a quick QSO, hi!

W5GDW: Thanks for another great letter challenge. The Us and Hs made it a little harder. See ya next month! Gary

KK4ITX: It was not easy this month with all the SUN issues. Also running QSO-A-Day and I thought I wouldn't make it a few days.

N8RVE: Always a fun challenge, solar flares , band conditions, and thunder storms made it tough, but kc4hch helped my with my last letters so all is good.

NAQCC AWARDS

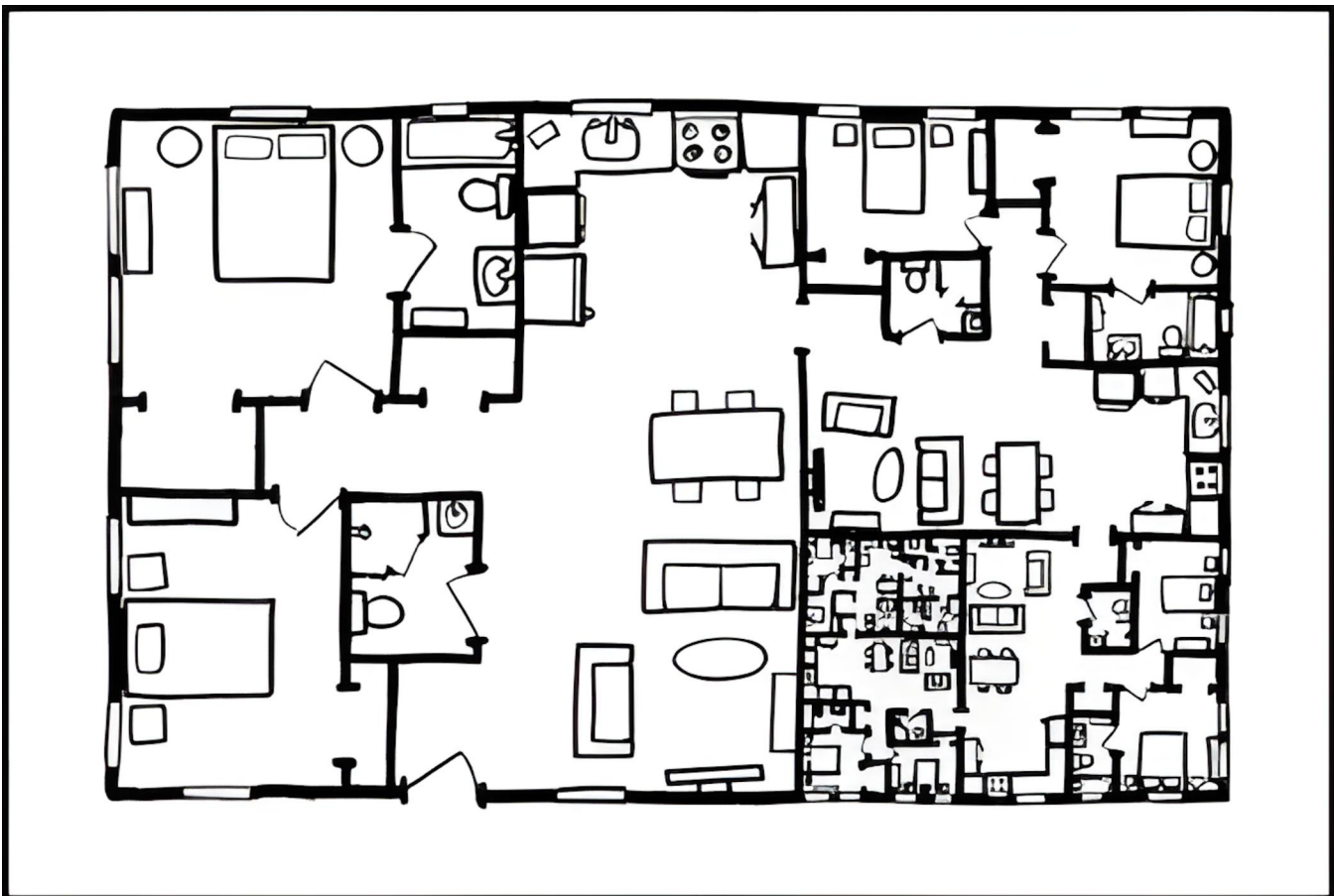
FEATURED AWARD: ALPHABET PREFIX

This month's featured award is a simplified version of CQ Magazine's popular WPA award. The goal is to work as many letter/number combination prefixes as possible using QRP CW and SWA. There are two categories for the award - World Prefixes, and USA Only Prefixes.

Handy tables showing all of the possible prefixes in both categories are available for downloading

from the award web page. Basic awards are earned with 200 world prefixes or 50 USA prefixes and certificates are issued at the 400 and 100 prefix levels.

Complete details on this award can be found at http://www.naqcc.info/awards_wpxswa.html.



LOG CABIN

GABIL GRA-7350T PORTABLE HF ANTENNA REVIEW

BY JOHN VE3IPS #5908

The Gabil GRA-7350T antenna is a game-changer for portable amateur radio enthusiasts. Its compact physical size combined with the common 3/8-24 stud thread makes it an excellent choice for on-the-go operations.

When I first saw the Gabil antenna come onto the marketplace I really didn't pay too much attention to it because it looked to me like another compromise antenna that had the M-P (PL-259) type connector. I already had the Comet HFM-350 that uses that connector and I found it to be somewhat limiting in how I would deploy it. My BNC mount GRA-1899T antenna could also be used with adapters. I don't really like the M-P connector that much, as most of my antenna systems use the standard 3/8-24 connector. I do use them with the Wind Camp RC-1 bracket.

THE RIGHT CONNECTOR

As soon as I saw that they were releasing a version with the 3/8"-24 thread, I knew that I had to have one because now I have the ability to use that with various mounts that I have acquired over the years that give me the most flexibility in the way I need to operate.

The use of the common 3/8-24 stud thread adds immensely to its versatility.

This thread size is widely used in the industry, allowing users to easily mount the antenna on various portable setups without the need for additional adapters or modifications. Hip Hip Hooray for Gabriel taking notice to offer this antenna with this thread.

PACKS SMALL

Another strong attraction to this antenna was the fact that it packs down into a small form factor. It could almost fit into a vest pocket. In fact, it does fit into a vest pocket in my Burberry Spy trench coat. The size is as follows: 80m coil 6.5 inches, main loading 11 inches and the telescopic whip is 9.75 inches. It weighs a light 340 grams. I found a perfect carry case as shown below.



IMPORTANT ADVISORY

“This antenna is designed to use the car body or the metal handrail as the ground earth when the portable use only. Do not install the antenna fixed and on to the transceiver all the time due to the issues of the prohibited from using for mobile” as per the Gabil instruction sheet. I have deployed the antenna that way using a JAWS clamp made by Workman. However, experimenters found that it can also be used on a camera tripod with appropriate counterpoise wires.

EUROPEAN VACATION

With an upcoming trip to Spain, I also thought this would be ideal for POTA and portable activations. It covers 40 to 6m plus 80m with the add-on coil. This also allows enhanced shortwave listening and CB radio activity. When I was out and about playing radio, it fit inside my backpack pocket without a worry.

I brought my Icom 705 and my portable CB on this trip to Europe. It turned out this antenna was ideal and also took it on several bus tours we did. I used RG-316 coax as well to keep things light. I did bring another telescopic antenna system as a backup.

I was right. This antenna packs down pretty small, it is light and very efficient. For its small size, it will never outperform a full quarter-wave antenna but who can deploy that in a public space without drawing attention. If you are driving to the beach or to the park, then weight isn't an issue, but if you are hiking to the operating location, doing a SOTA summit or just taking the bus into the city park then a small light-weight antenna that is efficient and radiates well is just what you need.

It uses a slider control that adjusts the Inductance of the coil to match it to the frequency that



you plan to operate on. No antenna tuner is required!

ADAPTABLE

It is very simple to use. You just adjust the slider control up or down for maximum noise. And then make small adjustments in order to get the SWR under 1.5 to 1. In many cases, I was able to adjust the antenna to the sweet spot just by listening to and looking at the meter for maximum signal. Of course, I was using this antenna in a portable environment with a JAWS clamp attached to a metal pipe or railing. I did have 16 feet of counterpoise wire that I sometimes used.

I also used it on the CB radio band with a CB portable and for listening to the SW Broadcast bands.



I found the Gabil antenna allows me to make contacts in various locations, is fast to set up and somewhat stealthy.

The hotel had a rooftop pool and I used my JAWS clamp to mount it on an outdoor shower. Photo 2. I used it in Gazamel during a tour after having lunch with it attached to a garbage can. Photo 3 Another time it was CB radio on a railing. Photo 4

The next hotel I stayed at in Madrid had its rooftop pool under renovation, and I was able to clamp the antenna to the hotel room window frame. I had it sticking out (I had some Paracord attached to the clamp and the antenna for safety) and I could hear stations but the noise level was S9. This was not a good location. Many city hotels are noise magnets.

ON 80M, SORT OF

Back home, I tried it on the local ONTARS Net on 3755 KHz. A very short antenna on 80m is not going to work DX but it allows great reception and I did try it and work a couple of stations 100 miles away. Next up is to try it with higher power with the Yaesu FT-891 as it supports 100W PEP.

Another great feature is that it can be easily used with my other portable radios that do not have a tuner. The slider does all the tuning.

BUILD QUALITY

I had it out in a light rain and windy snowfall and so far no rust. I do wipe it and ensure it's dry before putting it away, but the quality of the materials is very high. The threads are tight and there is no wobbling. I get really upset when antennas

I buy fall apart after several uses due to poor quality and bad workmanship. Buy once; cry once.

OTHER MOUNTING OPTIONS

I also have an antenna tripod mount I made that I use with my Manfrotto tripods. This antenna does require a counterpoise in that configuration. I use two 17ft wires or four ten-foot wires. Even though it's a mobile antenna it can be used as a portable antenna out in the field with a tripod. Gabil offers a nice one as an accessory.

I use it elevated with the longer counterpoise lengths and the other four are for use laying on the ground. Elevated is preferred but anything works. I don't spend too much time worrying about all of this because all I really want is to deploy the antenna quickly and start making contacts.

My friend is stuck in a HOA community where Fiona is on the lookout for violations, but with this antenna he can mount it on the patio table and he can FT8 all he wants. In fact if the HOA police knocks on his door he can quickly collapse the whip, unscrew the base coil and put it in his pocket as he goes to answer the door.....antenna what antenna?. With the tripod accessory, Brian can set it up in his second floor study. Naturally, SSB needs more signal power and he can use this antenna with his FT-891 at the park.

I plan to put a stud mount on my bicycle rack and use this antenna for operating from my bicycle. Stationary of course. The telescopic whip antenna can be bent if it gets snagged by a tree branch or if handled roughly.

Before I get 1000 messages, the antenna was packed in its heavy duty vinyl bag and went through several airline security checkpoints and



several train station security lines with no concerns, issues or baggage inspections.

Overall, the Gabil GRA-7350T antenna is a must-have for any amateur radio operator seeking a compact, reliable, and versatile antenna solution for portable operations. Its combination of compact size, common thread compatibility, and robust performance make it a valuable addition to any radio enthusiast's toolkit.

73,

John VE3IPS

<https://www.gabilradio.com/gra-7350t>
<https://youtu.be/tPDgUtKoi38>

NAQCC SPRINTS

JUNE SPRINTS

Our regular Sprint this month will be on Wednesday, June 12th at 0030-0230Z. That's the evening of Tuesday, April 11th in North America. Complete information at <http://naqcc.info/sprint/sprint202406.html>.

MILLIWATT SPRINT

The bonus one-watt-or-less mW Sprint will be on Wednesday, June 19th at 0030-0230Z. That's the evening of Tuesday, April 18th in North America. Complete information at <http://naqcc.info/sprint/sprint202406mw.html>.

RULES

Complete sprint rules and instructions on how to submit your log can be found at http://naqcc.info/sprint_rules.html. On that page you will also find information about the different computer loggers that are supported for our sprints. The membership data files for those supported loggers can be downloaded at <http://naqcc.info/contests.html>. **Please be sure to always get the latest membership data for your logger about a day before the Sprint.** A complete schedule for our upcoming sprints can be found at http://naqcc.info/sprint_sked.html.

MAY SPRINT RESULTS:

Complete Sprint results, including all of the soapbox comments, can be found at <http://www.naqcc.info/sprint/sprint202405.html>. High scores can be seen in the tables on the next page.

May Sprint				
	Current Month	Previous Month	All-Time Record	Record Date
Logs	67	79	217	4/17
Participants	104	107	269	2/13
Total QSOs	712	1,054	3,154	4/17
Hour 1 QSOs	452	662	1,704	4/17
Hour 2 QSOs	260	392	1,450	4/17
20m QSOs	188	277	1,232	8/13
40m QSOs	522	737	2,203	4/17
80m QSOs	2	40	1,417	2/13
Avg QSOs/Station	10.6	13.3	19.3	9/11

SWA STRAIGHT KEY CATEGORY			
Division	1st	2nd	3rd
W1	K1MZM	K1IX	-
W2	KA2KGP	AA2VG	K2OID
W3	K3JZD	AK3X	-
W4	KC5F	KO4NDP	N4ARY
W5	N5GW	W5WIL	KE5YUM
W6	-	-	-
W7	KC7DM	KJ7KDB	-
W8	W8GG	-	-
W9	WB9HFK	AA9L	K9QEW
W0	NN0SS	KD0DK	AA0W
Canada	VE2KZW	VE3IIM	-
DX	-	-	-

SWA BUG CATEGORY			
Division	1st	2nd	3rd
W1	WB1GYZ	-	-
W2	N2DGQ	-	-
W3	W1BLU	NN3E	-
W4	K3RLL	-	-
W5	-	-	-
W6	-	-	-
W7	N7QR	-	-
W8	K8NGW	-	-
W9	-	-	-
W0	WU0A	-	-
Canada	VE3HUR	-	-
DX	-	-	-

SWA KEYER/KEYBOARD CATEGORY			
Division	1st	2nd	3rd
W1	W1TER	KB1M	-
W2	WA1GWH	N2ESE	WA2FBN
W3	-	-	-
W4	AF4PX	N4MJ	K4KBL
W5	KA6J	-	-
W6	-	-	-
W7	KF7Z	-	-
W8	WI8J	WA8SAN	NF8M
W9	N9EEE	AB9BZ	-
W0	N0QBX	KC2MJT	-
Canada	VE3DQN	-	-
DX	DK1VD	-	-

GAIN CATEGORY			
KEY	1st	2nd	3rd
SK	-	-	-
BUG	-	-	-
K/K	-	-	-



Sculpture built into the wall of the former Imperial Post Office in Oldenburg, Germany

SPRINT HONOR ROLL

We honor the following members for their outstanding participation over the years in our regular sprints. Exact counts can be seen at http://naqcc.info/sprint_dates.html.

Number of Sprints	Members
50+	KC7DM KF7WNS WD4OHD K1IX VE3GNU KB0ETU K2YGM AA7CU AA5LH N8HWV KC2MJT VE3HUR N8QY WY3H W4HH K3JZD WT4U KC3RN K6CSL W5UAA KC2EGL KE9DR AB8FJ NN9K KD9EBS WK6L K2HT KD0DK AB9BZ K8NGW K9QEW K4ORD K5GQ N1JI W4NLT WA2NYY KB4QQJ KB9ILT VA3NU KA8VZB WI8J AA2VG N9SE KN2G NN3E
75+	WA1GWH WB9HFK VE3DQN WB1GYZ K4NVJ WA2FBN NQ2W WB4OMM N2CN VE3FUJ K9OSC WD0K N8BB AA0W NN0SS KJ4R N7QR K4KBL K6MGO NF5U WI5H N8APO
100+	KL7IEE NA4O KN1H W4DUK KA9FQG N4MJ NO2D AA9L WB8ENE N8LA KD2MX KD3CA KQ1P KB1M K9EYT
125+	WG8Y N0TA N4FI K4KRW AK3X N5GW
150+	K4BAI W9CC N8XMS KD0V K4JPN N2ESE K2CWM KE5YUM WX4RM KU4A WA8SAN
175+	K3RLL NF8M
200+	KA2KGP K3WWP W2SH W2JEK W8GG

SPRINT SOAPBOX SAMPLER

K4KBL - Truly weird conditions tonight. Got many non member calls from within state and signals were generally poor overall.

K3RLL - 20M noisy here but propagation was great - deep into Eastern Europe; a little less so for those skilled ops who had to work to hear me tonight, but thank you. 40m very high noise level and I couldn't hear anyone. ... 72, ... Don

NA4O - Very tough band conditions tonight. The plus was that I got more GA stations than ever before! Always a challenge in some way, but that is one reason I am here. Vibroplex Straight Key, KX3 @ 5W.

K2OID - My first time with a straight key. Thanks everyone for your patience. Conditions on 40 better than I expected given the recent solar activity. Lots of fun as always.

VE3DQN - It's a relief to hear so many signals after the days of compromised propagation. 14.061 MHz was jammed up with several signals right on top of each other. I'm sure they couldn't hear each other. I'm sorry I had to make a short night of it.

NF8M - Hello from Dayton! Remote op from hotel. Good activity tonite if a bit noisy. 72 es cu at Hamvention.



NAQCC NETS

We have a number of nets (QRS = slow speed, QRQ = higher speed) designed to help people build up their CW operating skills. Complete information about these nets can be found at http://naqcc.info/cw_nets.html. Questions should be directed to Net Manager Mark, W8EWH.

NAQCC Net Schedule				
Net	Local Time	UTC	Freq +/-	Primary NCS
East Texas QRS Net (ETN)	Monday 7PM CDT	Tuesday 0000 Z	7066 kHz Summer 3566 kHz Winter	Allen KA5TJS (TX)
Midwest QRS Net (MWN)	Monday 7:30PM CDT	Tuesday 0030 Z	7031 kHz	Bob W0CC (KS)
Pacific Northwest 80m QRS Net (PNW80)	Thursday 7 PM PDT	Friday 0200 Z	3556.5 kHz	Stewart KE7LKW (WA)
Wyoming Daily QRS 80 Meter Net (WY80)	Off the air			Steve KE7UUJ (WY)

Note: On the rare occasions that there is a conflict between one of our scheduled nets and one of our regular sprints, the sprint will take precedence.

NET CONTROL STATION REPORTS

NAQCC PACIFIC NORTHWEST QRS 80 METER NET (PNW80)

Thursday evenings 7 PM PDT, which is Friday 0200 UTC on 3556.5 kHz +/-
Main NCS - Stewart KE7LKW (Washington State)

May 03 – QNI (7) NCS KE7LKW, WB4SPB, AD7BP, K7DRQ, WB7WHG, NB6M, N7QR

May 10 – QNI (6) WB4SPB, AD7BP, WB7WHG, KB7DYP, KE7LKW, N7QR

May 17 – QNI (4) NCS KE7LKW, WB4SPB, WB7WHG, NB6M

May 24 – QNI (7) NCS KE7LKW, WB4SPB, WB7WHG, KB7DYP, W7VK, NB6M, AD7BP

May 31 – QNI (7) NCS KE7LKW, KB7DYP, K7JUV, W7LD, KJ7DZ, N7QR, AD7BP

NAQCC MIDWEST QRS NET (MWN)

Monday evenings 7:30 PM CDT, which is Tuesday 0030 UTC, on 7031 kHz +/-
Main NCS - Bob W0CC (Kansas)

May 06 – QNI (2) W0CC, K4BAI

John did a GREAT JOB picking out my signal with the QRN from the impending thunderstorm/ tornado! Had to shift to 7030.50 due to traffic on the published frequency of 7031.

May 13 – QNI (1) W0CC

Heard, but could not receive a response from KB4BJM. S-7 QRN with the Large Solar Flair. Only hear 2 other stations in the entire 40 Meter CW Band! Will try to hunt them down if they are still "out there".

May 20 – QNI (2) W0CC, W1TM

S-7 QRN. Tim did ANOTHER GREAT JOB picking out my 529 signal!

May 27 – QNI (2) W0CC, N9EEE

A LOT of QRN! As always, Dick, did another GREAT Job picking out my 449 signal!

NAQCC EAST TEXAS QRS NET (ETN)

Monday evenings 7PM CDT, which is Tuesday 0000 UTC,
on 7067 kHz +/- (Summer) or 3566 kHz +/- (Winter)
Main NCS - Allen KA5TJS (Texas)

May 07 – QNI (4) NCS KA5TJS, KE5YUM, KE5YGA, N4NN

Same crew again this week and signals were very good although the two guys in AR could not hear each other. Band was a little long I guess. GA was booming in 589. YUM reported 8 inches of rain in the last week. NN reported no big rain or storms over there.

May 14 – No Net

No net today, thunderstorms and heavy rain again in East TX. Had over 6 inches in the last 2 days. Enough! Hope to make it next week.

May 21 – QNI (3) NCS KA5TJS, KE5YGA, N4NN

Good net tonight. Both guys were 599 on peaks with some QSB. Long rag chew with YGA and he wondered if I heard some odd QRM on 7.040kc. He has a xtal for his home brew rig but always has a signal there. I looked last night and this morning and yet. It's there. Don't know what it is. Not any kind of digital signal I have heard before.

May 28 – QNI (1) NCS KA5TJS

Well, no check-ins tonight! One op had antenna problems, another could not get his rig to transmit, and one did not show up. Memorial Day, what can I say. Have a good week and hope for better luck next week.



NAQCC CHAPTERS

START A LOCAL CHAPTER

The North American QRP CW Club currently has six local chapters - West Florida, Illowa, Downeast Maine, Long Island, Florida, and Green Swamp WCF—but we would be more than happy to expand on that list.

Chapters are more or less independent local gatherings organized by NAQCC members in a geographical area and subject to a list of guidelines from the NAQCC. They provide opportunities to have fun and to promote our parallel passions of QRP and CW. If you are interested in forming a local chapter please contact club president John KK4ITX.

If your chapter is planning a portable operation activity and would like to have it promoted on the club email list or in the newsletter, send an email with the subject “NAQCC Portable Operation” and with the exact wording of the announcement to Steve, at the email address listed on the last page about a week before the operation. Please be sure to include the UTC time for the event and not just the local time.

A report about your chapter activity should appear here. Please send them to KD2MX at the email addresses listed on the last page.

NAQCC chapters located in the United States are welcome to use the NAQCC Club call, N3AQC for their special operations. Please contact call sign trustee Please contact call sign trustee, Club President John KK4ITX, to schedule the use of N3AQC.

NAQCC WEST FLORIDA CHAPTER



Items in this section are from the West Florida Chapter unless otherwise credited. Questions and comments should go to Ron, N9EE.

The chapter’s web site is
<https://www.facebook.com/groups/967110089994401/>.

EAGLE POINT PARK

May 25, 2024

Had a great time this last Saturday, May 25th, at Eagle Point Park in NPR with SARC members. Have not done NAQCC-WFL events since November due to colder weather. Ron, N9EE had my IC705 and MC750 and Chuck, KA4CEM had his G90 with BuddiStick vertical.



ATTENDING:

Tim WD8MVU
 Ron N9EE IC705 with MC750 vertical and 20m End Fed Wire
 Frank KK4DYF
 Don KA2KDP
 Chuck KA4CEM G90 with BuddiStick vertical

LOG:

Ron, N9EE, IC705 with MC750 vertical set to 20m and EleCraft T1 tuner when needed.

TIME	CALL	FREQ	COMMENT
1052	N9ZXL	14.060	Dave, IL SK 7114S
1132	WJ9B	21.062	TST
1136	NR6T	21.0635	TST
1138	DL8ON	21.0646	Germany, TST
1140	II4M	21.066	Italy
1212	PJ1T	21.0497	Netherlans Caribbean
1219	OK5SQ	21.032	Czech Republic

From last few NAQCC-WFL events have realized 20m and above does not open until after 1000 hrs. Moved up to 15m and it was going wild. But did not operate that much, lots of strong sigs to compete with.

Had hot dogs with Tim's cooking and soda and a good lunch. We QSY'd out of the park around 1230 hrs.



NAQCC LONG ISLAND CHAPTER



Items in this section are from the Long Island Chapter unless otherwise credited.

Questions and comments should go to Howard, WB2UZE.

NAQCC DOWNEAST MAINE CHAPTER



Items in this section are from the Downeast Maine Chapter unless otherwise credited. Questions and comments should be directed to Jeff, KA1DBE.

The chapter is located in the Hancock and Washington counties area of Maine.

NAQCC ILLOWA CHAPTER



Items in this section are from the Illowa Chapter unless otherwise credited.

Questions and comments should go to Tim, N9BIL.

The Illowa Chapter operates in the “Quad Cities” area of Davenport, IA / Moline, IL.

The Illowa Chapter website is at <https://sites.google.com/site/naqccillowa2/>.

NAQCC GREEN SWAMP WCF



Items in this section are from the Green Swamp WCF Chapter unless otherwise credited. Questions and comments should go to Gary N3OS.

The chapter's website is <https://www.zaarc.org>.

NAQCC PRIZE SPONSORS

MFJ

MFJ Enterprises, Inc.

<https://mfjenterprises.com>

**Get
Radio-active**

Join ARRL
arrrl.org/join



ARRL
The National Association for
Amateur Radio®

<https://www.arrrl.org/>



<http://www.4sqrp.com>



<http://zaarc.org/gsqrp.html>

KB3IFH QSL CARDS
& Ham Radio Gifts

<https://www.kb3ifhqslcards.com/>

NAQCC CLUB INFORMATION

STATEMENT OF PURPOSE

Amateur radio has something for everyone. For a growing number of folks, the challenge of "doing the most with the least" makes QRP (and QRPp) CW operating the greatest thrill available in amateur radio. The North American QRP CW Club Inc. exists to promote and pursue designing, information sharing, building, and operation of low power, Morse Code enabled Amateur Radio (FCC Part 97) equipment with simple wire antennas for both emergency and personal communications purposes, an exciting facet of the hobby.

The NAQCC provides numerous opportunities for hams to operate in QRP/CW activities. For contest types we have a popular monthly 2-hour sprint that runs at relatively low CW speeds and at a fairly relaxed pace to increase code skills and experiment with different antennas. Three special sprints also take place during the year for 160-meter and QRPp (less than 1W of power) operators. For a month-long activity we offer our members a Monthly Challenge that can be anything from forming a list of words from the calls of stations worked, to making a prescribed number of contacts using home-brew gear. There is also an extensive awards program to recognize the significant QRP/CW accomplishments of our members.

We also serve as a resource for people who are just getting started in QRP and/or CW, sharing information on low power Morse operations. Our slow-speed CW nets are a great place for beginners to practice Morse code under real on-air conditions. Beginners will also find a wealth of helpful information on these web pages and we are more than willing to answer any questions about QRP, CW, and simple wire antennas that you might have. An extensive monthly newsletter is filled with useful projects and news from fellow QRPers.

A number of local NAQCC Chapters offer opportunities to get together for in person socializing and QRP/CW activities. Portable operations are especially popular with the local chapters.

Whether you are a veteran ham radio operator who is looking for a new challenge in the hobby, or a beginner who is intrigued by the possibilities of QRP/CW communication, we cordially invite you to join us. Membership is free and the benefits and fun are significant.

REPRINT POLICY

Unless otherwise stated in the article, local clubs and other ham radio organizations are free to reprint featured articles from this newsletter, provided appropriate credit is given to the North American QRP CW Club and the author of the article. If at all possible a link to the club website at <http://www.naqcc.info/> should be included.

NAQCC CONTACTS

NAQCC President	John KK4ITX	jleahy00@yahoo.com
NAQCC Treasurer	Dennis W4DWS	w4dws@arrl.net
Downeast Maine Chapter	Jeff KA1DBE	j.hanscom@gmail.com
Florida Chapter	Nikki KM4SBQ	nickies1130@aol.com
Illowa Chapter	Tim N9BIL	n9bil@arrl.net
West Florida Chapter	Ron N9EE	n9ee55@gmail.com
Long Island Chapter	Howard WB2UZE	wb2uze@yahoo.com
Newsletter Submissions Member Spotlight	Paul KD2MX	kd2mx@arrl.net
Newsletter Editor	Brent WT4U	brentWT4U@naqcc.radio
NAQCC CW Nets	Mark W8EWH	mark.yergin@gmail.com

NOTE: These email address are not automatic links.
They are given here in graphic form to avoid harvesting by spambots.

The North American QRP CW Club Inc., is organized exclusively for scientific purposes within the meaning of Section 501(c)(3) of the Internal Revenue Code of 1986, and the Georgia Nonprofit Corporation Code to advance, promote, and pursue designing, information sharing, building, and operation of low power, Morse Code enabled Amateur Radio (FCC Part 97) equipment with simple wire antennas for both emergency and personal communications purposes. No dues or membership fees - open to any licensed radio amateur or shortwave listener (SWL) worldwide with interest in CW/QRP operation. Encouraging the use of CW and helping all hams increase CW speed and proficiency is a top club priority. Club activities are dedicated to QRP/QRPp operation, using CW and emphasize using simple wire antennas.

The North American QRP CW Club was founded in 2004 by WY3H and K3WWP and now has over 9500 members world wide. Membership is free and anyone interested in CW/QRP operating is welcome. Complete information about the NAQCC, including a membership application, activities schedule, and useful resources, can be found on our website at <http://www.naqcc.info>.

Inquires can be sent to:

Club President John Leahy KK4ITX
3513 Aquamarine Way
Zephyrhills, FL 33540 USA

