

NAQCC NEWS

ISSUE 223 JANUARY 2017



KEY CLICKS

- **2017 WILL BE A GREAT YEAR!** Plenty of great challenges and sprints have been planned for 2017 so be sure to fill in the date squares on that new calendar that you got from your insurance salesperson with our NAQCC events. You can find the complete list of monthly challenges at <http://www.naqcc.info/challenges.html>, and all of the sprints can be seen at <http://www.naqcc.info/contests.html>. Additionally a printable version of the full sprint schedule can be found at http://www.naqcc.info/sprint_sked.html.
- **START WORKING ON YOUR PRIZE ELIGIBILITY.** We will again have an exciting drawing for some great prizes during our 13th anniversary celebration in October and you need to start getting ready for that now. As we have done in past years, there will be a year-long participation requirement to be eligible for the high-tier prizes and you can meet that requirement by regularly participating in our monthly challenges and sprints. You can see the complete eligibility requirements on last year's prize page at http://www.naqcc.info/prize_drawing_12th_anniv.html.
- **NAQCC SPRINT CONFLICTS WITH CWops CWT.** In the regular November sprint, and the December mW sprint, we received some comments from participants expressing concern about the QRM that they experienced from the CWops sprint that overlapped with ours for the final half-hour. The CWops sprint is a weekly event held every Wednesday and the question was raised about the possibility of changing our sprint schedule to avoid this conflict. Our sprint team has discussed this issue and we do not think that any change is necessary at this time. The CWops contest always starts at 0300 Z and makes no adjustment for DST. Since we do adjust our times for DST, there are actually only 3 of our 2017 sprints that will have this overlap issue - January, November, and the mW December sprints. Rather than change our sprint schedule we will simply use this as a 30-minute opportunity to show that CW QRP can prevail even on bands filled with QRO stations! After all, it's "skill not power" that counts!
- **N2ESE WINS THE 2016 NAQCC SILVER LOG AWARD.** Gary, N2ESE, #5555, is this year's winner of our Silver Log Award. Gary won this award by submitting perfectly formatted logs for all 12 of our regular monthly sprints in 2016. Gary's prize, donated by K3WWP, is a copy of the *ARRL Wire Antenna Classics* book. Congratulations to Gary for his fine attention to detail in his log submissions!

IN THIS ISSUE

Key Clicks	1
Double Tuned Filter	3
Iambic Mode A or B?	5
Member Spotlight	8
Sprints	10
Challenges	15
Awards	17
CW Nets	18
Help For Beginners	21
Ham Quips	22
Chapter News	23
Member Submissions	36
About The NAQCC	38
Contacts	39

- **KD2MX REACHES THE 100 SPRINT LEVEL.** Congratulations to Paul, KD2MX, for submitting his 100th regular monthly sprint log in December. His prize for this accomplishment is a customized keychain fob made by Gregg, WB8LZG. You can find information about all of our various prizes at http://www.naqcc.info/main_giveaways.html.
- **ARE YOU STILL LISTED IN OUR PICTURE GALLERY UNDER YOUR OLD CALLSIGN?** Through an oversight on my part (N8XMS) it is possible that you might still be listed in our picture gallery at http://www.naqcc.info/pictures_gallery.html under a former callsign that you held. If that is indeed the case, or you find some other problem with your picture, please contact AF7OS using the email address shown at the top of that page and he will make the correction. By the way, if you are not in our picture gallery but would like to be, please go to <http://www.naqcc.info/pictures.html> for information on how to submit your picture.
- **CHECK OUT OUR MONTHLY POLLS.** Jerry, VE6CPP, puts up an interesting poll on our club website each month. You can cast your vote in the current poll and see past poll results using the links on the main club page <http://www.naqcc.info/>. The more people that cast a vote, the more interesting the results.
- **THANK YOU FOR THE DONATIONS!** A big "THANK YOU" goes out to everyone who has made a recent donation to the NAQCC treasury. The NAQCC has no membership dues and we depend on your generous donations to cover our operating expenses. If others would like to help out with a donation there are two ways that you can do it. The first way is to use *PayPal* to electronically send your contribution to Club Vice President John, N8ZYA, using the email found on the last page of this newsletter. To avoid any additional fees please be sure to check the box that says "*I'm sending money to family or friends.*" Also please add a note indicating that this is a donation to the NAQCC and include your call sign. The second way to make a donation is to mail a check or money order made out to *The North American QRP CW Club* and send it to *John Smithson, 1529 Virginia St E, Charleston, WV 25311*. Assuming that we have your correct email address on file, your contribution will be acknowledged by email with a carbon copy sent to a second club officer as a "check and balance."



DOUBLE TUNED FILTER

BY GENE, N5GW

Often a homebrew, vintage, or other hf receiver can benefit from improved front end selectivity. This is especially true on the 40 meter band where powerful adjacent out-of-band or even in-band signals may cause problems. Such stations seem to come and go due to frequency allocation changes and may vary with the time of day or season of the year. Multi-transmitter field day operators are familiar with a similar problem. Classic methods of dealing with such a malady include using stronger mixers, employing attenuators, or improved front end filtering to narrow the bandwidth.

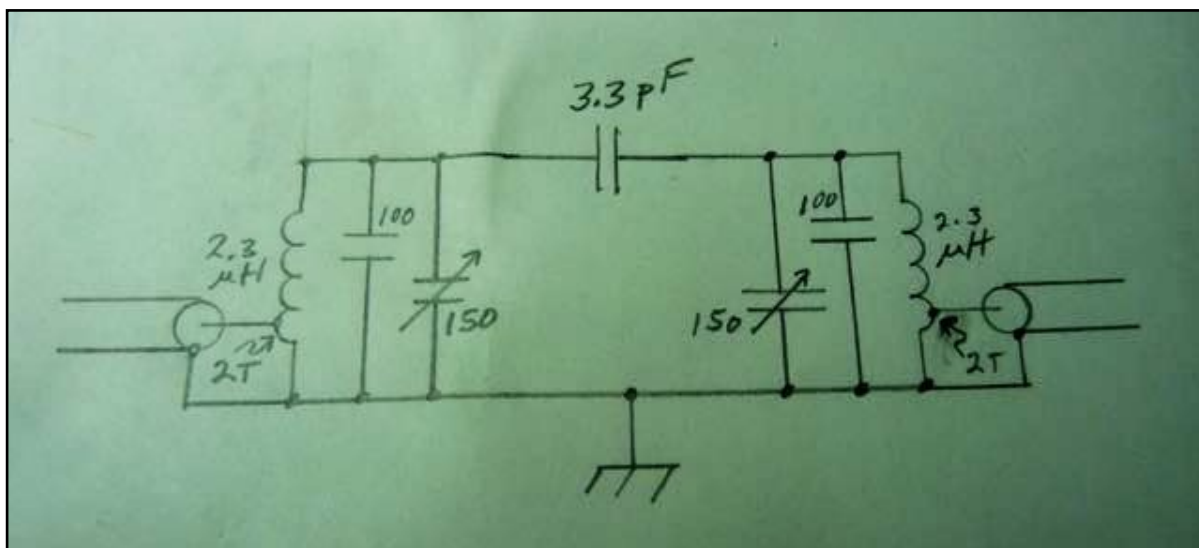
Double tuned filters (DTF) are more effective than single tuned filters, having steeper skirts and greater ultimate attenuation. If a DTF is undercoupled, not only does the bandwidth become narrower, but it also acts as an attenuator. There is an excellent W7ZOI article on DTF's in QST, December 1991, p. 29. It is reprinted in the ARRL publication QRP POWER, p. 5-29.

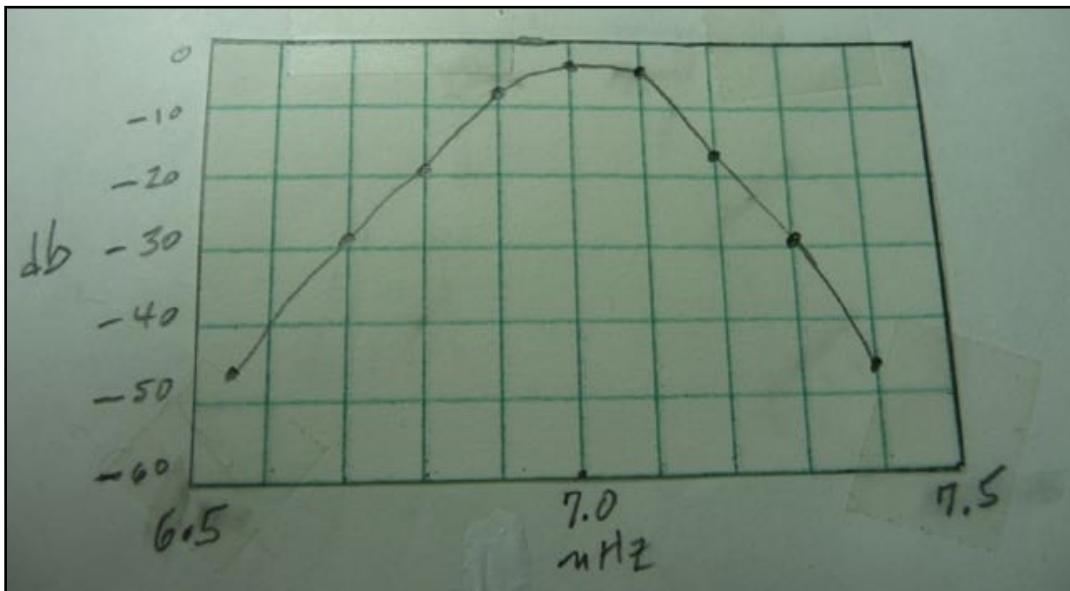
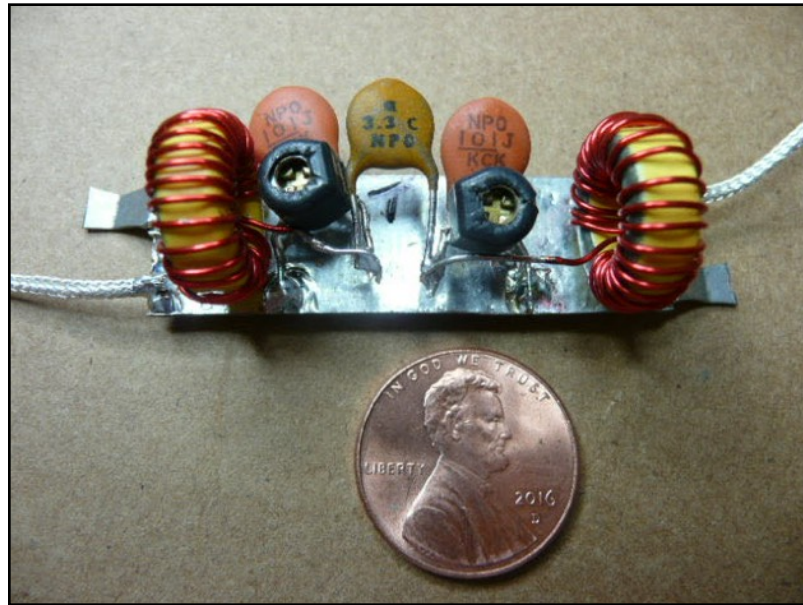
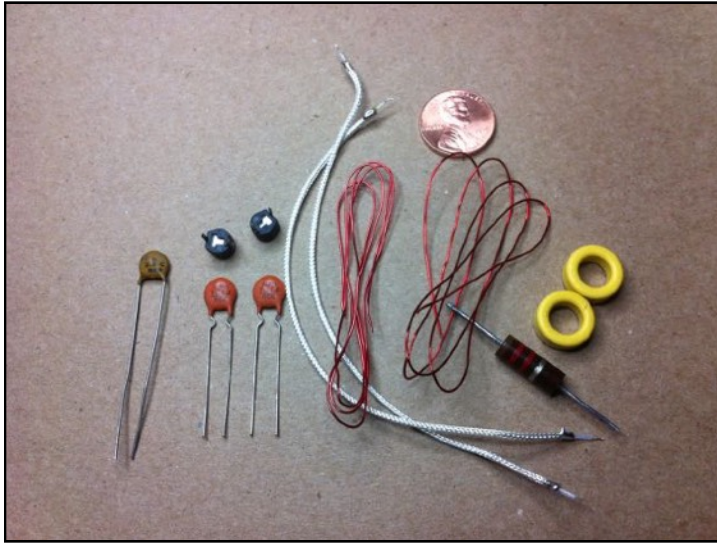
The following is a description and pics of a 40 meter DTF which should be easy to build, install and tune. It is compact enough that it may fit into an existing receiver. Also further miniaturization may be possible or it can be used outboard.

The first pic is a hand drawn schematic. A second pic reveals the components, all of which are available from Dan's Small Parts. The third pic shows the completed filter. Components are soldered directly onto the circuit board, supported by their leads. Standoffs are bent solder lugs. Inductors consist of 24 turns of #24 enameled wire on a T50-6 core, tapped at 2 turns from ground end. Fixed capacitors are 100 pF NPO. Tuning capacitors are 150 pF button trimmers. A coupling capacitor is 3.3 pF NPO. The miniature teflon coax has the braid removed to allow flexibility.

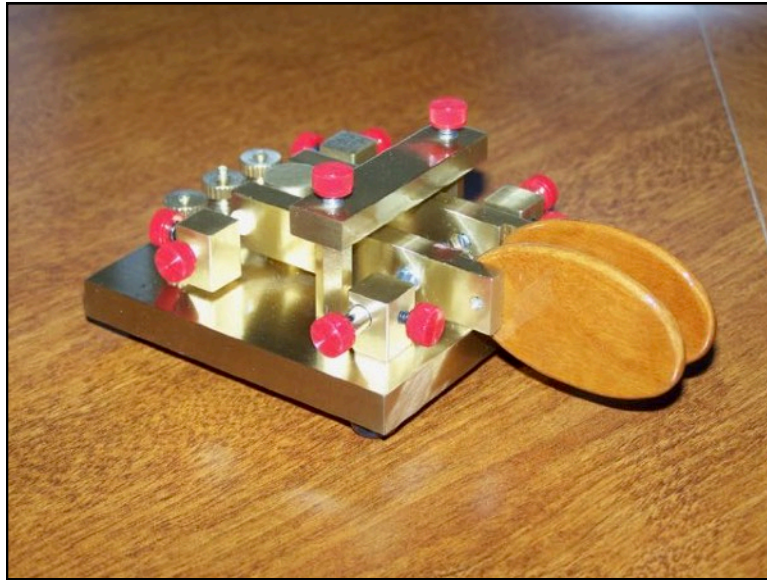
Once the filter is installed between the antenna and receiver front end, it is adjusted simply by alternately tuning the two variable capacitors for maximum signal strength. Since they interact somewhat, each capacitor should be tuned two or three times.

I measured the filter shape and attenuation using a signal generator, attenuator pads and microwatt detector. This particular component selection and layout results in a filter which is slightly undercoupled, associated with a loss of about 3.6 db. The fourth pic demonstrates the filter shape. If the 3.3 pF coupling capacitor is reduced to 2 or even 1 pF, further attenuation and bandwidth reduction can be achieved. This will require re-tuning.





IAMBIC MODE A OR B? BY PAUL, N8XMS



This month Jerry, VE6CPP has a very interesting question for our website poll (http://www.naqcc.info/poll_new.html). He asks our members if they prefer to use iambic Mode A or iambic Mode B when sending CW with their paddles. (There are also responses for people who do not use iambic keying.) I am very interested in seeing the results of this poll but it is possible that some of our members don't really know what this is all about. If you only use a straight key, bug, cootie, single-lever paddle, or double-lever paddle with a non-iambic keyer, you might not know what iambic keying is.

First the basics. When a paddle (single or double lever) is hooked up to a keyer, pressing the paddle in one direction will produce a continuous string of perfectly timed dits, at whatever speed the keyer is set to, until the paddle is released. Pressing in the other direction will produce a similar string of perfectly timed dahs until release. The standard convention is that the dits are produced by pressing with your thumb and the dahs are made by pressing with your index finger but this can be changed by a menu selection in the keyer or by wiring the paddle connector differently.

OK, so what is "iambic keying" (sometimes called "squeeze keying")? Well, if you have a double-lever paddle and an iambic-capable keyer there are some added features to what was described in the previous paragraph. With an iambic keyer if both paddles are pressed at the same time the keyer will send a continuous string of perfectly timed alternating dits and dahs until the paddles are released. If the dit paddle is closed slightly ahead of the dah paddle the keyer will send dit - dah - dit - dah - dit - dah - etc. But if the dah paddle is closed first it will be dah - dit - dah - dit - dah - dit - etc.

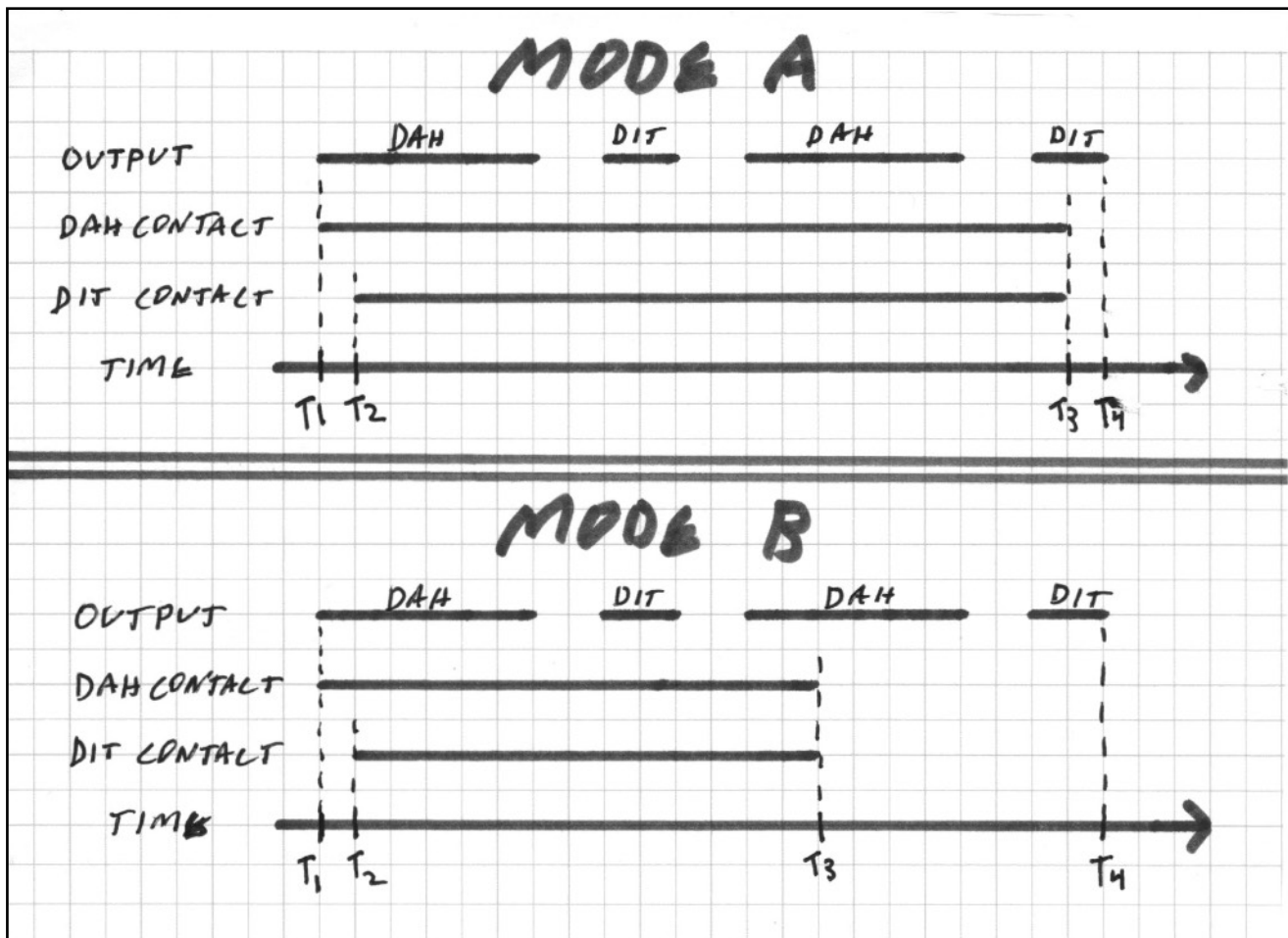
Another feature of iambic keying is the ability to insert a single dit or dah into a string of the opposite element. In other words if you press and hold the dit paddle the keyer will output a string of dits as previously described. But if you then tap the dah paddle a single dah element will be inserted into the dit string, all with correct timing. The same thing can be done to insert a single dit into a string of dahs. Using this feature a "Q" can be sent by first pressing and holding the dah paddle, and as the 2nd dah sounds you tap the dit paddle. The dit will be inserted into the output and then the final dah of the "Q" will sound and you release the dah paddle.

The purpose of this article is not to argue the pros and cons of iambic keying. I think that most CW

operators who master it, like it. I have seen an analysis that claims that iambic keying gives more than a 50% savings in the physical work needed to send code when compared to a straight key. But I also know of one well known CW expert who thinks that learning squeeze keying is at best a waste of time and might even be a bad idea. (See Marshall Emm, N1FN, for some interesting reading about this at <http://www.morsex.com/pubs/iambicmyth.pdf>.)

What I really want to talk about is the topic of this month's poll question - what is "mode A" and what is "mode B?" (By the way, there is another keyer mode called "ultimatic" but I don't know anything about it and apparently the keyers that are built into most modern rigs do not include this mode.) The difference between A and B is found in what the iambic keyer does when a squeeze of the paddles is released. In mode A the keyer will simply finish sending the single dit or dah element that it is currently sounding. In mode B it will complete the current element and then send one additional opposite element to finish the full 2-element dit-dah or dah-dit that it had started.

The easiest way to understand the difference is to use the following graphic to see what needs to be done in each mode to send the letter "C." First look carefully at the mode A diagram. At time T_1 the dah paddle has been pressed and the keyer starts to output the first dah. But just a small fraction of a second later at T_2 the dit contact has also been pressed causing the keyer to go into it's dah - dit - dah - dit squeeze sequence. The squeeze on the paddles is held until the final dit of "C" starts to sound, at which point, T_3 , both are released and then the keyer completes that dit at T_4 .



Now look at the mode B diagram. You start to send the "C" in the same way with the same T_1 / T_2 squeeze of the dah and dit paddles. But the difference is that the release of the paddles takes place sooner, with T_3 occurring any time after the second dah of "C" starts to sound. Mode B will then take over and add on the final dit to complete the letter.

So which mode is better? You will hear people arguing back and forth on that one. Claims of efficiency vs. sloppy habits will be made but to me it's like asking which color paint is best for your living room walls? It really is just a matter of personal preference. Perfectly good code can be sent efficiently in either mode. The one that you prefer probably has more to do with what mode was set on the keyer that you learned on, than on any characteristic of the mode itself. I learned on a keyer that defaulted to mode B and I didn't even know that there was another mode until long after I was already on the air with iambic keying.

I think that once someone is comfortable with a particular mode, switching to the other one could be difficult. I once had the opportunity to be a guest op at W1AW and was assigned to an operating position where the keyer was in mode A. I didn't know how to go into the menus to switch the mode so I just gave it a try with rather disastrous results. For example, sending a "C" would come out as a "K" because my mode-B habit would release the paddles too soon. I quickly gave up on the paddles and switched to a straight key for the rest of my time there.

Let me add one final thought. If you have never tried iambic keying, the details given in this article might make you think that it's too complicated, and might discourage you from giving it a try. But like so many things, the description of iambic keying is much worse than the reality, and with a little dedicated practice (off the air at first) I think that anyone with a decent sense of CW timing and rhythm can probably master it. But his article is not designed to be a tutorial on how to do iambic keying. If it is something that you would like to try here are a couple internet sites that will help you get started: <https://www.youtube.com/watch?v=9grBNtTLGzc> and <http://www.morsecode.nl/iambic.PDF>.

So please go to our NAQCC poll page at http://www.naqcc.info/poll_new.html and cast your vote. By the end of the month we should have some interesting results to look at and think about.



MEMBER SPOTLIGHT



Each month one of our members is randomly selected and asked to share their ham radio biography with all of us. Questions or comments should go to Paul, KD2MX.

DISCLAIMER: Any views expressed in this section are those of the submitting member and may or may not be those of the NAQCC or its officers.

JON MILLIREN, AB3RU, #6431



Hi everyone. I'm Jon and my callsign is AB3RU. I've been licensed for less than five years. My tech call was KB3YXM and my General call was KB3ZBI. Each time I upgraded, I went for a new call hoping to get one that was short to send in morse code and I think AB3RU is ok. I'm soon to be 47 years old and I work as a systems administrator at the University of Pittsburgh where I've been since 1997. I'm thankful to have a job that I enjoy. I'm married and we have three kids, none of whom are interested in hearing the old man talk about making a five watt contact to Japan, hihi.

Although I'm relatively new to amateur radio, I have always been a DXer and just didn't know there was a name for it. When I was very small, my family would visit with my grandparents, and put my brother and I to sleep in the guest room. The radio would be tuned to KSFO and there was a man reading Winnie-the-Poo. Later on, I was old enough for Mystery Theater, and around that time after that was over, I would tune around on AM to find something else to listen to. Once I heard Sacramento which I'd never heard. I never kept track of the stations I would pick up, but I did listen to things at the noise level just to do it. I didn't know about shortwave radio at the time.

So the typical story happens: Boy gets older, finds different hobbies, goes to school, etc...

Now it's 2012. I by now knew what shortwave radio was, and the XYL kindly bought one for me for Christmas. I put the wire out my window, and tuned around. I could hear Australia, Romania, and islands in the middle of the ocean. I was having fun. My friend Drew, now W3FFZ, had inherited some ham radio gear from his uncle and grandfather. He kept the radios around because he thought it would be a shame to throw them away, even though he didn't have a license to use them. He was visiting one day and I was showing him the shortwave and told me I could have his TS-120s. I figured out it was a

transceiver and asked if we didn't need licenses for using this stuff? Yep, you do. So, we went down and took the test and got our Tech licenses.

I took off from there. I got my General the next month, and Extra seven months later. I first used the local 2m repeaters, and did sideband on 10m as well. I also bought a cheap plastic straight key and CPO kit from the ARRL. I've always liked electronics and kits, and I assembled electronics for five years in a previous job, so the electronic aspect of radio was appealing to me. I started buying kits and learning morse code. I stumbled onto the air and kept practicing and learning. I joined the SKCC and the NAQCC and started participating in the sprints, and that really helped me get better with morse code. The TS-120s blew up because I was still learning the digital modes, and that left me with my YouKits Hb1b as my main rig. If I wanted to make contacts, it was going to have to be QRP and CW.

I have other radios now, but I'm still 99.9% QRP and CW. I am active on the amateur radio subreddit on [reddit.com](https://www.reddit.com), where I often encourage people getting started learning morse code to check out the NAQCC. I had the pleasure of operating N3A two years ago and I did that to get more comfortable with calling CQ because at the time I was only answering calls. I have operated on the USS Requin with John, K3WWP, and Mike, KC2EGL and sat at the NAQCC table at a couple of hamfests with them as well. Everyone I've ever met from NAQCC has been friendly, welcoming and helpful, and I credit the majority of my progress in the hobby to all of you in the NAQCC. 73 and I hope to work you soon.

The picture is of me testing my friends G5RV with my YouKits Hb1b while I made a qrp cw contact to Umma, Germany.



NAQCC SPRINTS

CURRENT MONTH'S SPRINT: We have two sprints to enjoy in January. First up is our regular monthly sprint on January 19, 0130-0330 UTC. That's the evening of the 18th here in North America. Then on January 25, 0130-0330 UTC (24th in NA) we have our annual special 160-meter sprint. You can find complete details about these sprints at <http://www.naqcc.info/sprint/sprint201701.html> and http://www.naqcc.info/sprint/sprint201701_160.html.

Please remember to strive for that perfectly formatted "SILVER LOG" submission. It really helps our log processing. Everything that you need to know about how to have a Silver Log can be found at <http://naqcc.info/GLCheckList.txt>.

Complete sprint rules and information on log submissions can be found at <http://naqcc.info/contests.html>.

We occasionally get questions from sprint participants about how to use the GenLog software to log and report their contacts. Most of the time the answers to these questions can be found in the excellent illustrated tutorial written by KB8FE and found at http://www.naqcc.info/sprint_genlog_tutorial.html. Alternatively, a logging spreadsheet for Mac OS X computer users is available at http://www.naqcc.info/sprint_macs.html.

LAST MONTH'S SPRINT RESULTS: Wow, what a difference a month makes! From a rather poor showing in November with only 96 logs and 131 total participants we jumped to 136 submitted logs and 185 total participants for our regular December sprint! Reported conditions were a little bit mixed and generally not too good but nevertheless there were plenty of sprinters who managed to get QSO counts up in the 20's and 30's, and 3 operators (K3WWP, N3HEE, and W3KWH) were in the 40's or 50's! Who said you need sunspots to make QRP contacts?!

Complete sprint results, including soapbox comments, can be seen at <http://www.naqcc.info/sprint/sprint201612.html> and summary information can be seen in the tables on the following pages.

We would especially like to welcome our first-time log reporters. We hope that you had a great time and will return often: W3KWH W4HAY KF4BY N9CX WW0SS W1FOX W7SWB AI9W K1TB W2ID VE2BZO

We also had one of our semi-annual QRPp Sprints in December. 53 logs were submitted with one of them being a QRO check log. Conditions were poor everywhere and downright rotten in most places. Your best chances were in districts 4 and 5 where the 1st place straight key stations managed to make 23 and 17 QSOs respectively, and participants averaged a little more than 8 contacts each. Contrast that to my 8th district where the 1st place straight key operator only had 3 QSOs! So why would anyone in their right mind want to take on such poor conditions with such tiny flea power? One participant used the word "*masochists*" in their soapbox comments! Maybe, but I think that K8UDH's soapbox might give a better answer: "*Conditions were ruff for the sprint with weak sigs and QSB. It was fun and very rewarding to work hard and dig out the weak ones. It helps me appreciate better conditions. I would like to see more MW Sprints.*"

Complete mW Sprint results can be seen at <http://www.naqcc.info/sprint/sprint201612mw.html>.

We want to welcome our first-time mW sprint loggers and hope that the tough conditions will not discourage them from participating again (June): N4WD W4QO KF4BY K0PF K4WLW K8UDH W3TTT W7PAZ WH6YH

2016 SILVER LOG WINNER N2ESE: Gary, N2ESE, #5555, is this year's winner of our Silver Log Award. Gary won this award by submitting perfectly formatted logs for all 12 of our regular monthly sprints in 2016. (K3WWP and N8XMS also submitted 12 silver logs through the year but were ineligible for the award.) Gary's prize, donated by K3WWP, is a copy of the *ARRL Wire Antenna Classics* book. Congratulations to Gary for his fine attention to detail in his log submissions! With just a little bit of care this could be you in 2017!

KD2MX REACHES 100-LOG LEVEL: With his December sprint log Paul, KD2MX, reached the 100 submitted sprint logs level and won the prize of a nice custom keychain fob made by Gregg, WB8LZG. Congratulations to Paul for this outstanding achievement.

PARTICIPATION ELIGIBILITY: Remember that participating in a combination of sprints and challenges will make you eligible for the top-tier prizes in our anniversary drawing in October. So start working on it now. Eligibility details at http://www.naqcc.info/prize_drawing_12th_anniv.html.

SWA STRAIGHT KEY CATEGORY			
Division	1st	2nd	3rd
W1	KN1H	WB1GYZ	
W2	W2SH	AA2VG	
W3	N3HEE	AB3RU	KD3CA
W4	WG8Y	K4BAI	K4ORD
W5	N5GW	W5WIL	
W6	WK6L		
W7	KD7DM		
W8	WB8LZG	N8XMS	
W9	W9CC	WB9HFK	
W0	N0TA	NN0SS	
VE	VE3DQN	VE3RCN	
DX			

SWA BUG CATEGORY			
Division	1st	2nd	3rd
W1			
W2			
W3	K3WWP		
W4	WA2EDN		
W5	W5ODS		
W6			
W7	N7QR		
W8			
W9			
W0	KD0V		
VE			
DX	KP2/ AA4W		

SWA KEYER/KEYBOARD CATEGORY			
Division	1st	2nd	3rd
W1	N2CN		
W2	K2YGM	K2ZD	
W3	W3KWH		
W4	WB4OMM	KU4A	WH6YH
W5	K5MBA		
W6	NS3C		
W7	AA7CU		
W8	K8TJ	AC8JW	
W9	N1RU		
W0	K2HT		
VE	VE3FAO		
DX			

GAIN CATEGORY			
KEY==>	SK	BUG	K/K

FIRST TIME ENTRANT HIGH SCORE			
KEY==>	SK	BUG	K/K
	W4HAY		W3KWH
PRIZE DRAWING WINNER			
N0TA			

	Current Month	Previous Month	All-Time Record	Record Date
Logs	136	96	194	2/13
Participants	185	131	269	2/13
Total QSOs	1620	1140	2804	2/13
Hour 1 QSOs	921	615	1468	2/13
Hour 2 QSOs	725	525	1334	2/13
20m QSOs	22	0	1232	8/13
40m QSOs	800	283	1534	4/12
80m QSOs	824	857	1417	2/13
Avg QSOs/Station	12.0	11.9	19.3	9/11

SPRINT HONOR ROLL: We honor the following members for their outstanding participation over the years in our regular sprints. Exact counts can be seen at http://naqcc.info/sprint_dates.html.

NUMBER OF SPRINTS	MEMBERS
50+	K4ORD K9EYT KB0ETU K9OSC KA9FQG K6MGO NA4O N8BB WG8Y AA7CU KC2EGL VE5BCS N2ESE K6CSL N8QY WA8SAN N0TA WX4RM WD0K K4KRW NQ2W KB8FE NO2D WY3H AA9L KQ1P W4DUK KE5YUM NU7T
75+	WB8ENE WA2JSG VE3FUJ K1IEE N4FI KD0V K3RLL NF8M KU4A K4JPN K4NVJ KB3AAG
100+	KD2MX N8XMS K4BAI WB8LZG W2SH W9CC
125+	W2JEK KA2KGP K3WWP

SWA STRAIGHT KEY CATEGORY MW SPRINT			
Division	1st	2nd	3rd
W1	KN1H		
W2	W2SH		
W3	KD3CA		
W4	WG8Y	WD4OHD	
W5	N5GW		
W6	WK6L		
W7	KC7DM		
W8	WB8LZG		
W9	N9RLO		
W0	K0PF		
VE	VE3EDX		
DX			

SWA BUG CATEGORY MW SPRINT			
Division	1st	2nd	3rd
W1			
W2			
W3	K3WWP		
W4			
W5	NF5U		
W6			
W7			
W8			
W9			
W0	KD0V		
VE			
DX			

SWA KEYSER/KEYBOARD CATEGORY MW SPRINT			
Division	1st	2nd	3rd
W1	KB1M		
W2	N2ESE		
W3	AB3RU		
W4	W4QO		
W5	WI5H		
W6			
W7			
W8	K8TJ		
W9			
W0	K8UDH		
VE			
DX			

GAIN CATEGORY MW SPRINT			
KEY==>	SK	BUG	K/K

FIRST TIME ENTRANT HIGH SCORE MW SPRINT			
KEY==>	SK	BUG	K/K
	N4WD		W4QO
PRIZE DRAWING WINNER MW SPRINT			
KF4BY			



NAQCC CHALLENGES

CURRENT MONTH'S CHALLENGE: Our North American challenge for January is an alphabet challenge that works with a list of words that deal with some unique new year's traditions from around the world. You can find the list of words and other details at <http://www.naqcc.info/challenges/challenges201701.html>.

The European challenge for January is an alphabet challenge involving some major European events and celebrations. See <http://naqcc-eu.org/eu-challenges/january-2017-challenge/> for details. Remember that you don't have to be in Europe to participate in the European challenges.

NEXT MONTH'S CHALLENGE: Our North American February challenge is to make at least 15 QRPp QSOs including working at least 2 DX entities other than your own. Details can be seen at <http://www.naqcc.info/challenges/challenges201702.html>.

The European challenge for February deals with some modern classical music composers. <http://naqcc-eu.org/eu-challenges/february-2017-challenge/>.

Complete information about our challenges including a helpful tutorial on how to organize your work for an alphabet challenge can be found at <http://naqcc.info/challenges.html>. Detailed general rules for our challenges can be found at http://naqcc.info/challenges_rules.html.

LAST MONTH'S CHALLENGE: The deadline for submitting entries for the December challenge is still a few days away so final results are not yet available. You can go to <http://www.naqcc.info/challenges/challenges201612.html> to see what has been posted so far, and the final results will also be posted there shortly after the 10th of the month.

The European challenge results will be available at <http://naqcc-eu.org/eu-challenges/december-2016-challenge/>.

PARTICIPATION ELIGIBILITY: Remember that participating in a combination of sprints and challenges will make you eligible for the top-tier prizes in our anniversary drawing in October. So start working on it now. Eligibility details at http://www.naqcc.info/prize_drawing_12th_anniv.html.

CHALLENGE HONOR ROLL: We honor the following members for their outstanding participation over the years in our monthly challenges. Exact counts can be seen at http://www.naqcc.info/challenges_schedule.html.

NUMBER OF CHALLENGES	MEMBERS
25+	N1JI PA0XAW KD2MX N1LU KD0V K9OSC VE3HUR KU4A WY3H
50+	K1YAN VE3FUJ NU7T
75+	K1IEE
100+	N8XMS W2JEK
125+	K3WWP



NAQCC AWARDS

We have an extensive list of awards that you can earn. Complete details can be found at <http://naqcc.info/awards.html>.

FEATURED AWARD: WAVE (Worked All VE) Simple Wire Antenna Award

This award only requires 8 QRP QSOs using "Simple Wire Antennas" with the following regions of Canada: Alberta, British Columbia, Manitoba, Maritimes, Newfoundland, Ontario, Quebec, and Saskatchewan. Notice that the provinces of New Brunswick, Nova Scotia, and Prince Edward Island have been grouped together into the Maritimes region. Also the really challenging regions in Canada - Yukon, Northwest, and Nunavut Territories - are not required for this award but can be worked for an added endorsement. There are two categories for the award - QRP and 2xQRP. In addition to the Territories endorsement, there are also endorsements for Single Band and QRPp. Only QSOs made since March 1, 2011 can be applied and as with all of our awards, we take your word for it - QSLs are not required. Complete details on the WAVE award and how to apply for it can be seen at http://www.naqcc.info/awards_waveswa.html.

RECENTLY ISSUED AWARDS:

1000 MPW Award

0526	W3TTT	NF5U	-	1,190	12/26/16	80m	Inverted-V@65'
0525	KA5PVB	KF7WNS	-	1,434	12/01/16	80m	G5RV @ 30'
0524	KA5PVB	NA4O	-	1,636	12/01/16	80m	G5RV @ 30'



NAQCC QRS/QRQ NETS

We have a number of nets (QRS = slow speed, QRQ = higher speed) designed to help people build up their CW operating skills. Complete information about these nets can be found at http://naqcc.info/cw_nets.html.

NAQCC NET SCHEDULE

Net	Local Time	UTC	Freq +/-	Primary NCS
Farnsworth 40/80 m QRQ Nets (FRN)	Sunday 4:00/6:00 PM PT	Monday 0000/0200 Z	7056/3556 KHz	Rick, N6IET (in CA)
East Texas QRS Net (ETN)	Monday 7 PM CT	Tuesday 0100 Z	3564 KHz	Allen, KA5TJS (in TX)
Midwest Net QRS Net (MWN)	Monday 9 PM CT	Tuesday 0300 Z	7117 KHz	Scotty, NU0S (in NE)
Rocky Mtn Regional/Continental QRS Nets (RMRc)	Tues/Thurs 4:00 PM MT	Tues/Thurs 2300 Z	14060 KHz	Dale, WC7S (in WY)
Rocky Mtn Regional/Continental QRS Nets (RMRc)	Tues/Thurs 4:30 PM MT	Tues/Thurs 2330 Z	7062.5 KHz	Dale, WC7S (in WY)
West Virginia QRS Net (WVN)	Wednesday 9 PM ET	Thursday 0200 Z	7117 KHz	John, N8ZYA (in WV)
Pacific Northwest 80 m QRS Net (PNW80)	Thursday 5 PM PT	Friday 0100 Z	3574 KHz	Stewart, KE7LKW (in WA)

Note: On the rare occasions that there is a conflict between one of our scheduled nets and one of our regular sprints the sprint will take precedence.

GENERAL NET NOTES

Several of our NAQCC nets have been fighting seasonal propagation issues and have found it necessary to adjust their operating schedules. Please be sure to check our online schedule page at http://www.naqcc.info/cw_nets.html for the latest times and frequencies.

The net reports found on the next two pages are unfortunately incomplete. We apologize for this and ask for your patience as we try to get a few issues sorted out. If you have any questions about net operations please contact the NCS or club president Paul, N8XMS.

NAQCC NET REPORTS

NAQCC Farnsword Net (FRN) QRQ 40/80 Meter Nets

Sunday evenings 4:00 PM PST, which is Monday 0000 UTC on 7056 kHz +/-

Sunday evenings 6:00 PM PST, which is Monday 0200 UTC on 3556 kHz +/-

Main NCS - Rick N6IET (California); Backup NCS - JB NR5NN (California)

2016-12-05 40m QNI (7) NCS N6IET, Co-NCS W7SAG, N7HRK/M, KE6EE, KW6G, NR5NN, K7KY

2016-12-05 80m QNI (6) NCS N6IET, Co-NCS NR5NN, KB7KY, K6GVG, KW6G, W7SAG

2016-12-12 40m QNI (4) NCS N6IET, W7SAG, KB7KY, N7HRK//M

2016-12-12 80m QNI (3) NCS N6IET, KE6EE, W7SAG

2016-12-19 40m QNI (6) NCS N6IET, N7HRK/M, AI6SL, W7SAG, KE6EE, KW6G

2016-12-19 80m QNI (3) NCS N6IET, NR5NN, KE6EE

FRN Commentary by Rick N6IET

FRN is about improving our CW skills and is not for beginners. We welcome anybody who can copy the NCS (or a relay station or co-NCS) and whose code speed is at least 15 wpm. FRN is a semi-directed net using a roundtable format. We usually make about three rounds for individual commentary, during which each station is free to engage other stations in brief dialogs. I encourage the use of QSK (full break-in).

Generally, we each send at about 21 wpm but insert extra word spacing for slower stations. This helps us improve our "head copy" by helping us recognize whole words or syllables. Sometimes, after the first half hour or so, we QRQ to about 23 wpm or even 25 wpm, depending on who is still checked in and their copying abilities. There is nothing like being under pressure to keep up to improve your code speed and copying abilities.

The rapidly declining 11-year sunspot cycle has played havoc with our ability to find times and frequencies at which and on which we can all copy each other over such a wide area, which includes all the western states and Mexico. In the winter, 40 meters seems to work best just before sunset, and 80 meters works well about an hour after sunset, thanks to the vagaries of the D (absorption) and F2 (refraction) layers of ionosphere, either of which are affected by sunlight or the absence thereof. Either band gets too long (closer stations skip over each other) much later than the scheduled times. For that reason, we moved both the 80- and 40-meter nets up another half hour in December to exploit the best propagation conditions on each band, and that worked pretty well. We'll keep the same schedule for the month of January.

Why do we meet twice, once on each band, you may ask? Because I value the participation of those operators whose antennas and operating schedules are optimum for one particular band or time of evening. The more distant stations are often weak on 80 meters, while the closer stations are much stronger on that band. So this becomes not only a CW skills exercise but a lesson in HF propagation!

72/73 and a Happy New Year to all!

de Rick N6IET

=====

NAQCC East Texas QRS Net (ETN)

Monday evenings 7:00 PM CST, which is Tuesday 0100 UTC, on 3561 kHz +/-

Main NCS - Allen KA5TJS (Texas)

12/06/2016 QNI (3) NCS KA5TJS KE5YUM KE5YGA

12/13/2016 QNI (2) NCS KA5TJS KE5YGA

12/20/2016 QNI (2) NCS KA5TJS KE5YGA

12/27/2016 QNI (5) NCS KA5TJS KE5YGA KE5YUM N5DRG WI5H

=====

NAQCC MIDWEST QRS Net (MWN)

**Monday evenings 9:00 PM CST, which is Tuesday 0300 UTC, on 7117 kHz +/-
Main NCS - Wayne NQ0RP (Kansas)**

- 10/31/2016 40m QNI (2) NCS NQ0RP KD2ITZ
- 11/8/2016 40m QNI (1) NCS NQ0RP
- 11/15/2016 40m QNI (1) NCS NQ0RP
- 11/22/2016 40m QNI (1) NCS NQ0RP
- 11/29/2016 40m QNI (1) NCS NQ0RP

=====

NAQCC Rocky Mountain Regional/Continental QRS Nets (RMRC)

**Tuesday/Thursday at 4:00 PM MST, which is Tuesday/Thursday 2300 UTC, on 14060 kHz
Tuesday/Thursday at 4:30 PM MST, which is Tuesday/Thursday 2330 UTC, on 7062.5 kHz.
Main NCS - Dale WC7S (Wyoming)**

=====

NAQCC West Virginia QRS NET (WVN)

**Wednesday evenings 9:00 EST, which is Thursday 0200 UTC on 7117 kHz.
Main NCS - John N8ZYA (West Virginia)**

=====

NAQCC Pacific Northwest QRS 80 Meter Net (PNW80)

**Thursday evenings 7:00 PM PST, which is Friday 0300 UTC on 3574 kHz.
Main NCS - Stewart KE7LKW (Washington State)**

- 12-1-2016 QNI (8) NCS WB4SPB, KG7JEB, W7ANM, KE7LKW, K7HZ, N7TES, AD7BP, K7JUV
 - 12-16-2016 QNI (5) NCS KE7LKW, W7ANM, AD7BP, WB4SPB, KG7JEB
 - 12-23-2016 QNI (5) KE7LKW/7 NCS, KG7JEB, K7JUV, W7ANM, WB4SPB
 - 12-30-2016 QNI (8) KE7LKW NCS, KG7JEB, K7JUV, W7ANM, WB4SPB. NB7M, N5DJY, N0DA
- =====



HELP FOR BEGINNERS



Items in this section are from CW Assistance Project Coordinator Brion, VE3FUJ, unless otherwise credited. If you are interested in helping out or need some help yourself please contact VE3FUJ. Additional help is also available on our website at <http://www.naqcc.info/cw.html>.

This is from Paul, N8XMS...

I recently enjoyed a nice 40-meter QSO with Christian, W4ALF, who happens to be an NAQCC member (#7845). With that callsign (I remember the TV show) I just had to take a quick look at his [QRZ.com](http://www.qrz.com) page and sure enough a picture of that lovable TV alien is featured there. But I also found this statement in his bio, "I have recently learned CW and now operate in that mode most of the time. Love it!" Christian is serious enough about developing his CW skills that he has written a free pdf e-book called "*The Road To CW.*" It's very well written, includes some nice pictures and graphics, and contains a lot of great advice for anyone that is serious about learning and/or improving their CW skills. You can find the book at [http://www.k4co.org/MiscDocuments/Road to CW de W4ALF.pdf](http://www.k4co.org/MiscDocuments/Road%20to%20CW%20de%20W4ALF.pdf).

By the way, the next project that Christian is taking on is a companion book called "The Road To QRP." So be watching for that one in the coming year.



HAM QUIPS



Dick Sylvan, W9CBT, #2062, has been a QRP/CW operator for a long time. He is also a very accomplished ham radio cartoonist and his work has appeared previously in the K9YA Telegraph newsletter. His book "HI HI - A Collection of Ham Radio Cartoons" is available at www.lulu.com.

HAM QUIPS "Run For The Bacon"

© 11-28-05 Dick Sylvan



Waldo Feels It Gives Him A Distinct Advantage To Keep A Pig In The Shack During The Flying Pigs "Run For The Bacon" Contest.



NAQCC CHAPTER NEWS

The North American QRP CW Club currently has eight local chapters - Europe, Western Pennsylvania, West Virginia, West Florida, Central Texas, Illowa, Delmarva, and Florida - but we would be more than happy to expand on that list. Chapters are more or less independent local gatherings organized by NAQCC members in a geographical area and subject to a list of guidelines from the NAQCC. They provide opportunities to have fun and to promote our parallel passions of QRP and CW. If you are interested in forming a local chapter please contact Club President Paul, N8XMS.

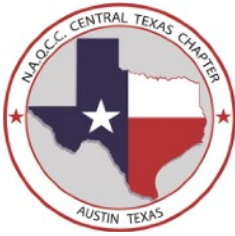
If your chapter is planning a portable operation activity and would like to have it promoted on the club email list or in the newsletter, send an email with the subject "NAQCC Portable Operation" and with the exact wording of the announcement to Vice President John, N8ZYA, at the email address listed on the last page about a week before the operation. Please be sure to include the UTC time for the event and not just the local time.

A report about your chapter activity should appear here. Please send them to KD2MX or N8XMS at the email addresses listed on the last page.

NAQCC chapters located in the United States are welcome to use the NAQCC Club call, N3AQC for their special operations. Please contact call sign trustee Paul, N8XMS, to schedule the use of N3AQC.

Chapter Reports Begin On The Next Page

CENTRAL TEXAS CHAPTER



Items in this section are from the Central Texas Chapter unless otherwise credited. Questions and comments should be directed to Danny, N5DRG.

The chapter is located in the Austin, TX area.

No report available.

DELMARVA CHAPTER



Items in this section are from the Delmarva Chapter unless otherwise credited. Questions and comments should be directed to Bill, N3IOD.

The chapter is located in the Delaware-Maryland-Virginia area.

No report available.

NAQCC EUROPEAN CHAPTER



Items in this section are from European Chapter unless otherwise credited. Questions and comments should be directed to Matt, MW0MIE.

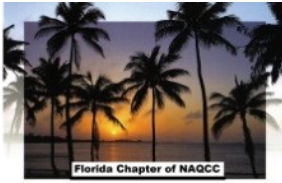
The European Chapter has its own monthly challenges to compensate for the Atlantic Ocean. However all are welcome to participate, not just members in EU, and we regularly receive challenge logs from North American participants. Please see the chapter website for dates and details at <http://www.naqcc-eu.org/>

We have an exciting programme of challenges coming up over 2017. The January challenge is centered around constructing the names of five European events in 2017 and the dates on which they start. Full details are available on our website: <http://naqcc-eu.org/eu-challenges/january-2017-challenge/>

We've had five entries for our December challenge so far, from HA4FY, K1IEE, PA9CW, RW3AI and EA1XN. The December challenge concluded our annual theme of European river-based challenges. Many thanks to all for taking part.

We're going to be holding our next activity day on Tuesday 24th January -- please mark the date in your diaries! As with all chapter activities, all NAQCC members are invited to participate, not just those residing in Europe. The activity days are fun, informal contests that run over a day, or as long as you are able to participate. For full details, check out our website: <http://naqcc-eu.org/activity-days/>

NAQCC FLORIDA CHAPTER



Items in this section are from the Florida Chapter unless otherwise credited. Questions and comments should go to Steve, WB4OMM.

The Florida Chapter website is <http://wb40mm.com/naqcc-fl-chapter>.



MEMBER NEWS: On Friday, December 16th, 2016 the Florida Chapter of NAQCC held its latest “Operation in the Park” event at Candace Strawn Park at Lake Dias, a small county Park “sandwiched” between State Road 11 and Lake Dias.

This park has a nice covered pavilion, adjacent parking, a restroom and several large picnic tables (many near the water), making for easy setup. We’ve been to this park a few times and it is one of our favorites. We arrived, to a temp of 64 degrees and 50% humidity, accompanied by crystal clear blue skies and a light breeze. Florida Winter at its best!



DON K3RLL MAKES ONE OF HIS 2 QRP QSOs



Don K3RLL #5274 “reeled in” one member (AB4QL – Barry #777) and a non-member (KP4KD) on 40M using his KX-3 at 5W to a 31-foot wire held vertical by Jackite stuck in the ground – fed with a homebrew 9:1 UNUN. Battery powered, of course! Don arrived a bit later than the others, but was able to setup quickly and on the air. We’re glad he made it!! He’s the only one to wear our NAQCC hat on this outing (Steve had his, but didn’t wear his – shame on him!)



BOB W2EJG WORKING THE 30M BAND – NICOLE KM4SBQ SUPERVISES

Steve WB4OMM #5913 let Bob W2ELG run his station along with new ham Nicole KM3SQB – a KX-3 running 5W out. Bob called CQ without a response on 30M for what seemed forever. After almost 2 hours, Steve got on and finally made a contact – the only one for the day – with a non-member in OH. Antenna was a homebrew End Fed Wire – 53 feet long to a 9:1 balun. The KX-3 tuned the antenna flat, but deep QSB, almost no signals, couldn't make a Q. This outing was one of the worst for propagation that anyone could remember. Oh, for some sunspots!!!

Ken N4KS #7626 came up from New Smyrna Beach to join our outing – he brought a K2 and ran 5W to a 20M Hamstick vertical antenna.....mag mounted on his vehicle in the parking lot! For some reason, he cleaned up today (just goes to show you how different antennas perform with propagation).



Ken N4KS the "master contact dude" for today's outing!

He worked 6 stations including a NPOTA QRP station WD8RIF #3005 at the **Charles Young Buffalo Soldiers National Monument** (MN18) in Ohio.

Also, members KG3W #3758 in PA, NN9K #6887, ABØBM #5372 in IA plus non-members VP5/VE7ACN and K5EDM in TX.

He did well with the rotten propagation! Glad he came, he made us look good!



Group Shot - Don K3RLL, Bob W2EJG, Ken N4KS, and Steve WB4OMM



A nice view of the dock/boat ramp and Lake Dias - an absolutely beautiful day!

We quit around noon and enjoyed our “brown bag picnic” lunch in the pavilion....we told all kinds of operating tales and the food was great! But not as great as our friendship and outing! We commiserated over the bad propagation, talked about the recent NAQCC Sprint, and of course, talked about the “good old days”. Everything was better back then! 😊 (Sure it was..... Hi hi hi)

Many thanks to those who listened for us and helped make this yet another successful NAQCC-FL event! We appreciate those to look for us to contact!!

NEXT MONTH: The next monthly outing of the NAQCC-FL Chapter is scheduled for Friday, January 20th, 2017 at 9:30 am.

AND.....

THE NAQCC-FL CHAPTER EXTENDS OUR MOST SINCERE WISHES TO ALL OF YOU FOR A SAFE MERRY CHRISTMAS AND HOLIDAY SEASON, AND A PROSPEROUS AND HEALTHY NEW YEAR!



72/73 to all, and to all a good night!

Steve

WB4OMM #5913 NAQCCFL@yahoo.com

NAQCC ILLOWA CHAPTER



Items in this section are from the Illowa Chapter unless otherwise credited. Questions and comments should go to Peter, NN9K.

The Illowa Chapter operates in the “Quad Cities” area of Davenport, IA / Moline, IL.

Illowa Chapter regular meeting 08 December 2016

The meeting was held at the Bettendorf Village Inn with Tim, N9BIL, Tony, N9YPN, Dave KD9VT, Ann, W0ANN, John, WS0G. and Peter, NN9K attending.

John has a new PortaPaddle purchased and built. We discussed keying cables and decided that it is always wise to check your radio's manual before getting out the soldering iron and starting to build a cable since each radio has its own plug configuration.

Tim gave us an update on the Sea Sprite building project. We have received the kits. Tim started building his and found that there was an error in the parts packaging we received. We were sent Version 2 circuit boards but the parts enclosed were for the Version 1 boards. After an email exchange with W1REX we received the correct parts. Tim then finished building his Sea Sprite. There are also some changes in the building documentation that need to be accomplished. W1REX has been very prompt and helpful working with Tim to make the needed changes.

Tim brought his finished Sea Sprite to the meeting so everyone could see the finished transceiver. There is a lot of enthusiasm to get started on the group building project.

John asked if anyone has seen the BitX radios, although not CW radios they are QRP devices. See <http://www.hfsigs.com/> and <http://www.grpkits.com/bitx20a.html> for more information.

Now that 2016 is coming to an end the ARRL sponsored National Parks on the Air program is winding down. There is another world-wide amateur radio parks program available with many, many more locations for portable operations. Please see <http://www.ff-kff.com/> for more information.

Dave alerted us that the SKCC January anniversary event will take place starting the first of the new year. He will be operating as K3Y/9. See the SKCC webpage for more details--<http://www.skccgroup.com/k3y/k3y.php>.

We continued our ongoing discussion of end-fed antenna, this time talking about toroid sizes and mixes. Dave has talked to an Amidon engineer and the T200-2 and the T225-2 mixes were recommended for use in 9:1 ununs for both QRP and higher power uses.

Best wishes for the New Year to all the NAQCC members from the Illowa Chapter.

Peter, NN9K

NAQCC WEST FLORIDA CHAPTER



Items in this section are from the West Florida Chapter unless otherwise credited. Questions and comments should go to Ron, N9EE.

The chapter's web site is at <https://www.facebook.com/groups/967110089994401/>.

No report available.

NAQCC WEST VIRGINIA CHAPTER



Items in this section are from the West Virginia Chapter unless otherwise credited. Questions and comments should go to John, N8ZYA.

The chapter's web site is at <http://n8zyaradioblog.blogspot.com/>.

No report available.

NAQCC WESTERN PENNSYLVANIA CHAPTER



Items in this section are from the Western Pennsylvania Chapter unless otherwise credited. Questions and comments should go to John, K3WWP.

Only two WPA Chapter events in December, and neither was primarily a ham radio event. However the radio amateur is 'balanced' with many interests outside ham radio, so I feel it is fine to write about such things on my ham radio site as well as here in the NAQCC newsletter.

Sunday, December 11, 2016 - As usual, a great day when Mike and I get together. Mike arrived just as I was walking Roscoe. When that (enjoyable) chore was done, we talked for a while and checked the bands (nothing to report - some DX heard but not worked on 20). Then we headed off to the Trolley museum near Washington, PA. There were quite a few more people there than the last time we visited a few months ago. We checked in with our tickets (electronic), and checked out the Lionel train display they had set up. Then we wandered outside to wait for the start of the trolley ride - The Santa Claus tour. Of course it was designed for normal aged kids and not us old kids at heart, but we had a good time nonetheless, especially watching the young kids. Everyone sang some carols as we rode along.

We then got our pictures taken with Santa Claus. Then it was back to the 'station' where we looked at a collection of old trolleys. A different collection from the one we saw the last time. Then another ride on the "Yuletide Express" where the conductor had a good time with the kids (young ones), pretending to see if they were in Santa's book of good kids or the book of bad kids. Not surprisingly all were in the good book.

Back again to the station to check out the Events area for some cookies and another model train setup.

Here are some pictures Mike took of our museum visit:





From upper left to lower right, that's:

The two biggest kids with Santa. I think their names were John and Mike something or other.

The front of the Yuletide Express trolley.

Santa and his helpers on the Santa trolley.

A side view of the Yuletide Express.

The front of the Santa trolley.

An RFE poster in one of the trolleys.

A 1948 election poster in a trolley.

A Lionel model train with newer three rail tracks.

Same with older 2 rail tracks.

After that we headed to the Pittsburgh Mills and Applebees where we both had a fish and chips dinner although I had a fish and rings dinner instead. When we got home here, we didn't have much time left as Mike had to head home since he had to get up early to help handle the Christmas mailing rush. He says it is particularly hectic now with all the on-line shopping and consequent mailing nowadays.

As we do every year on Christmas night, Mike and I get together to drive around Kittanning and a couple surrounding communities to check out the Christmas lights. There seemed to be more lights this year than the past couple years. That's a good sign that perhaps the country is getting back to some traditional values.



MEMBER SUBMISSIONS



This section is a forum for you to tell other members what you've been up to on the ham bands or to submit a short article dealing with some aspects of CW and QRP operation or equipment. Just about anything that would be of interest to our members would be welcomed. Send your items to our News Editor Paul, KD2MX.

DISCLAIMER: Any views expressed in this section are those of the submitting member and may or may not be those of the NAQCC or its officers.

From Mike, KG4MTN, #0397—

I know most of us in NAQCC use Gen Log for our sprints. During the December Sprint my Gen Log program went south on me and completely quit working. I fiddled with it with no success, and finally contacted Dave, W3KM, the program's father. Dave spent a goodly amount of time diagnosing my problem, and giving me suggestions as to what might be wrong and how to fix it. Based on his patience and advice, my Gen Log program is back up and running 100% and I am ready for NAQCC Sprints again!! The Gen Log program is free and Dave spends time keeping the program updated and working FB. We are fortunate to have individuals such as Dave who spend their time, energy and money to help the rest of us Hams. Dave has a PayPal link on his web site. I am sending him a payment to help him for his efforts and would recommend the same for any Ham who uses and appreciates Dave's Gen Log program! Also, let's not forget to make a contribution to the NAQCC treasury so we can keep our great club going forward!!

Thanks and 72, 73,

Mike Serio
KG4MTN

From John, K3WWP, #0002 —

I hope everyone had a good 2016 and will have an even better 2017. I'm sure we all will.

It was a fairly busy month for K3WWP with a lot of activities, ham radio and otherwise. As is my custom now, instead of taking up valuable space here in the newsletter, I'll simply refer you to my web site diary for all the details. You can find it at <http://k3wwp.com/>. Just look for the Diary link in the menu bar at the top of my main page.

From Mike, KG4MTN, #0397 —

I wanted to write you and give my perspective on the Monthly Challenge. I have been a NAQCC member for several years but have been relative inactive with my hamming activities. With winter weather coming, this year I decided to crank my activities for those cold grey days when it was nicer to remain indoors. I am a NAQCC member, as well as FISTS and SKCC. I decided to work on my SKCC Centurion and Tribune designations this past December, thru their various sprints and activities and also get better involved with NAQCC and FISTS activities. I have a QRO rig, a Kenwood TS530S and an Elecraft K2, which is my main rig for my station. I have been a ham for 54 years, QRP for most of that time.

I have never given much thought to our Challenges because I thought it would be a lot of trouble to match all of the callsigns with the letters. Prior to the SKCC December Weekend Sprint, I earned my Centurion designation. I needed another 50 QSO's/numbers to get to Tribune, and I found that contacts were coming just as easily with QRP as with QRO, so I begin working those stations exclusively QRP. I had considerable success with that, just earning my Tribune designation a few days ago. I had a bunch of callsigns, so just for fun, I decided to look at what was involved with a NAQCC Challenge. To my delight, the most excellent "Alphabet Challenge Web Application" by Robby WB5RVZ has made working the Challenge a fun and exciting project!! It was exciting to enter a new call and see the letters and words fall in place!! No, I did not complete the December challenge with my QRP contacts, but I did finish four of the words, leaving a few R's and L's missing!! Count me in as a regular in the Challenge going forward! Thanks for all of the work you guys do to make QRP so much fun!!!

Mike Serio

KG4MTN



NAQCC CLUB INFORMATION

STATEMENT OF PURPOSE

From NAQCC President Paul Huff, N8XMS

Amateur radio has something for everyone. SSB, FM, AM, the digital modes, and QRO power levels all have their place in this great hobby and we certainly recognize the importance of these modes as well as the enjoyment that they give to many. But for a growing number of hams the challenge of *“doing the most with the least”* makes QRP (and QRPp) CW operating the greatest thrill available in amateur radio, and the North American QRP CW Club exists to promote this exciting facet of the hobby. As part of our focus we also encourage, but do not limit operators to, the use of simple wire antennas.

The NAQCC provides numerous opportunities for hams to enjoy QRP/CW operating. For contester types we have a popular monthly 2-hour sprint that runs at relatively low CW speeds and at a fairly relaxed pace. Three special sprints also take place during the year for 160-meter and QRPp operators. For a month-long activity we offer our members a Monthly Challenge that can be anything from forming a list of words from the calls of stations worked, to making a prescribed number of contacts using home-brew gear. There is also an extensive awards program to recognize the significant QRP/CW accomplishments of our members.

We also serve as a resource for people who are just getting started in QRP and/or CW. Our slow-speed CW nets are a great place for beginners to practice Morse code under real on-air conditions. Beginners will also find a wealth of helpful information on our club website and we are more than willing to try to answer any questions about QRP and CW that you might have. An extensive monthly newsletter is filled with useful projects and news from fellow QRPers.

A number of local NAQCC Chapters offer opportunities to get together for in person socializing and QRP/CW activities. Portable operations are especially popular with the local chapters.

Whether you are a veteran ham radio operator who is looking for a new challenge in the hobby, or a beginner who is intrigued by the possibilities of QRP/CW communication, we cordially invite you to join us. Membership is free and the benefits and fun are significant.

The North American QRP CW Club was founded in 2004 by WY3H and K3WWP and now has over 8000 members world wide. Membership is free and anyone interested in CW/QRP operating is welcome. Complete information about the NAQCC, including a membership application, activities schedule, and useful resources, can be found on our website at <http://www.naqcc.info/>. Inquires can also be sent to

Club President Paul Huff, N8XMS
9928 Eckles
Livonia, MI 48150
USA



Additional contact information can be found on the next page.

NAQCC CONTACTS		
NAQCC President Newsletter Editor	Paul - N8XMS	paul142857@gmail.com
NAQCC Vice President West Virginia Chapter	John - N8ZYA	jspiker58@gmail.com
Delmarva Chapter	Bill - N3IOD	william.hammond@mchsi.com
European Chapter	Matt - MW0MIE	matt@naqcc-eu.org
Florida Chapter	Steve - WB4OMM	wb4omm@arrl.org
Western Pennsylvania Chapter	John - K3WWP	naqcc33@windstream.net
Central Texas Chapter	Danny - N5DRG	n5drg@naqcc-centraltexas.net
Illowa Chapter	Peter - NN9K	nn9k.peter@gmail.com
West Florida Chapter	Ron - N9EE	mccrpt@tampabay.rr.com
Help For Beginners	Brion - VE3FUJ	ve3fuj@wightman.ca
Member Submissions Member Spotlight	Paul - KD2MX	kd2mx@arrl.net
NAQCC CW Nets		