

# NAQCC NEWS

ISSUE 252 JUNE 2019



## KEY CLICKS

- **LEADERSHIP TRANSITION UNDERWAY.** I joined the leadership team of the NAQCC (as the Club Manager) in 2013 and became the President in the fall of 2014. It is now time for me to step back a little bit and turn over my work to someone else. Extensive discussions with our club VP John, N8ZYA, went into this decision and when we thought about who would replace me a single name immediately popped up to the top of our list. I am very pleased to announce that Steve Szabo, WB4OMM, will be the new President of the NAQCC. Over the coming months we will be working with Steve on the transition and he will officially step into the office in January 2020. I will then remain as an assistant/advisor for him and will also continue as the newsletter editor for at least the first few months of the new year. You can “meet” Steve on page 3 of this issue. - Paul, N8XMS
- **ANNIVERSARY SPECIAL EVENT OPERATORS NEEDED.** This year we will be celebrating our club’s 15th anniversary from October 6 through 12 (UTC) and, as in past years, we need volunteers to put our special event callsign on the air during that week. No special equipment is needed other than your regular gear, your operating schedule is completely flexible, and logging “paperwork” is kept to a minimum.

This year, because of some rule changes made by the 1x1 callsign administrators, we will only be using the N3A call and will add portable designators to indicate locations. The disadvantage to this is that our calls will be a little bit longer to send, but the advantage is that we can now easily include operators in Alaska, Hawaii, the US Virgin Islands, and Puerto Rico.

One operator from each district will be exclusively designated to use the special call in the anniversary sprint that week and that person should have some previous sprint experience. But other than that there are no other special requirements. If you are a member of the NAQCC and can operate CW QRP (any speed) on one or more HF bands you qualify. There is no limit to the number of people who participate so “the more the merrier.”

If you would like to be one of our special ops, or if you just need some questions answered before making a commitment please email me at the address listed on the last page of this newsletter. And if you want to be that one designated special-call sprint operator from your district let me know that as well - first come first served. (Please be sure to include your call district and NAQCC membership number in your email.) - Paul, N8XMS

### IN THIS ISSUE

Key Clicks	1
Meet The Next President	3
HT-1A Review	4
Summer Portable in Maine	7
Member Spotlight	9
Sprints	11
Challenges	14
Awards	16
CW Nets	17
Ham Quips	21
Chapter News	22
Member Submissions	38
About The NAQCC	39
Contacts	40

- **CHECK OUT OUR MONTHLY POLLS.** Jerry, VE6CPP, puts up an interesting poll on our club website each month. You can cast your vote in the current poll and see past poll results using the links on the main club page <http://www.naqcc.info/>. The more people that cast a vote, the more interesting the results.
- **THANK YOU FOR THE DONATIONS!** A big “THANK YOU” goes out to everyone who has made a recent donation to the NAQCC treasury. The NAQCC has no membership dues and we depend on your generous donations to cover our operating expenses. If others would like to help out with a donation there are two ways that you can do it. The first way is to use *PayPal* to electronically send your contribution to Club Vice President John, N8ZYA, using the email found on the last page of this newsletter. To avoid any additional fees please be sure to check the box that says “*I’m sending money to family or friends.*” Also please add a note indicating that this is a donation to the NAQCC and include your call sign. The second way to make a donation is to mail a check or money order made out to *The North American QRP CW Club* and send it to *John Smithson, 1529 Virginia St E, Charleston, WV 25311*. Assuming that we have your correct email address on file, your contribution will be acknowledged by email with a carbon copy sent to a second club officer as a “check and balance.”



# MEET THE NEXT PRESIDENT

*As announced in Key Clicks on page 1, Steve, WB4OMM, will be the next President of the NAQCC. He will be transitioning into that role over the coming months and will officially become the president in January 2020. - Editor*

When Paul and John solicited me for the President's position a few months back, I was surprised and humbled. I thank them for their faith and confidence in leading what I consider a prestigious, national organization.

NAQCC had me in the "Member Spotlight" in the January 2018 and available at [http://www.naqcc.info/feat/feat\\_wb4omm.pdf](http://www.naqcc.info/feat/feat_wb4omm.pdf); so between that bio and photo, and the information available on my webpage [www.wb4omm.com](http://www.wb4omm.com) and [www.qrz.com](http://www.qrz.com), it's not too hard to figure out what I'm into and about. Take a look if you haven't, and you'll see I love this hobby, have a long history in it, and I have been quite active in QRP CW (and NAQCC in particular!) - and every other mode/band/activity I can get involved in. Yes, it is a passion.

While a few folks might be thinking, "what changes are you gonna' make?", it is not my intent or desire for "me" to make any changes - it's up to the membership to make those suggestions. I am all about maintaining quality membership, quality activities, and providing timely information to the members - that's a successful future. Not just "changing things around". That's not leadership. And that's not me.

Our organization already has a large variety of quality activities - and our membership boasts not only a huge amount of "shakers and movers" in the Ham Radio community, but a lion's share of both serious and casual CW and QRP operators across the globe. Our strength is in our diversity of operators and the fact that CW and QRP are unique in efficiency and use. I am still surprised (I guess by now I shouldn't be) at what 2 or 3 watts of CW can do with a simple antenna- and how friendly and open our activities are (I love getting that "GE Steve, ur 559 here in IL" during our sprints).

I think we already have a GREAT organization, and WONDERFUL and COURTEOUS operators for members. The volunteer staff (and there are MANY volunteers - thank you!) provide a plethora of wide-ranging activities and our membership is growing. It is my hope to continue the good work provided by my predecessors, and help guide our Club to have positive growth, and benefit our membership and the Amateur Radio community at large.

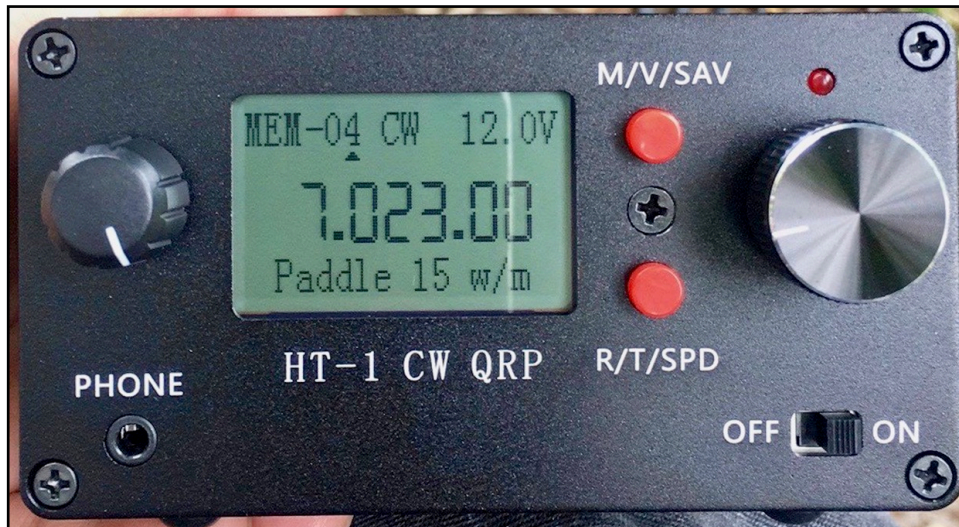
I hope you will support me in that endeavor.

72/73, and thank you for your membership.  
Steve WB4OMM #5913.



# HT-1A TRANSCEIVER REVIEW

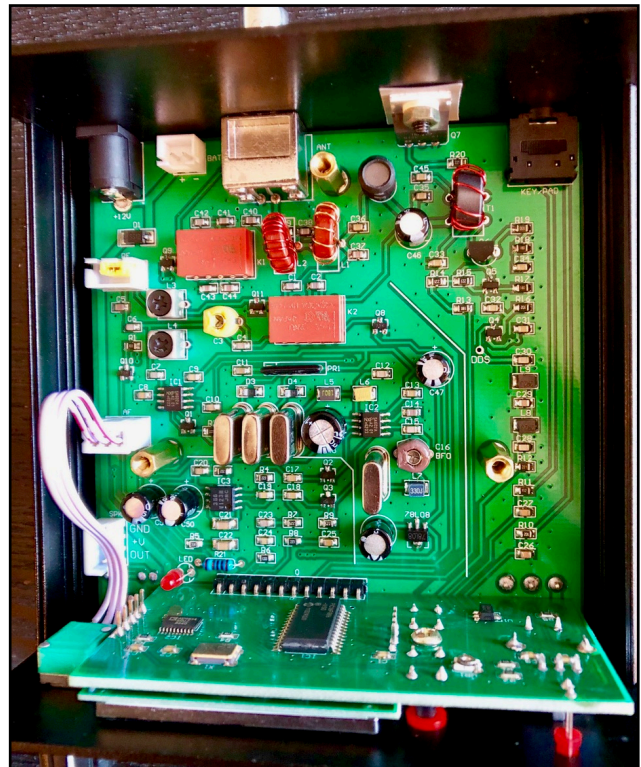
BY JAMES, KH2SR



The HT-1A is a compact 20/40m dual band CW QRP transceiver from CRKITS that comes in either kit form or fully assembled. I received the fully assembled model, so this review won't cover the kit building process. Even though I didn't build this one, I did take a peak inside. SMD components are used, but not to worry. All the SMD parts are pre-mounted, and you will only have to solder through-hole components.

Measuring 4.33" x 4.09" x 2.32" and weighing in at only 400 grams (14.12 oz), the HT-1A is a great option for hams that enjoy portable operating in the great outdoors. It'd be a good fit for SOTA & POTA activations or even quick LTOTA deployments (Lunch Time On The Air).

It has a transmit range of 7.0-7.2 MHz and 14.0-14.35 MHz. Even though this rig only transmits CW, it does have the ability to listen to SSB signals. It also has an extended receive range, which covers everything between 5.9-16 MHz which means shortwave broadcast reception while in SSB mode. Filter bandwidth is set at about 300 Hz for CW and 1.8 KHz for SSB. Spurious suppression is no worse than -50 dBc. I was impressed that the receiver is surprisingly sensitive considering the size and price of the radio. Using simple, base-loaded MFJ single-band telescopic whip antennas with no counterpoise and no grounding, I was able to copy quite a few QSOs on 20m and 40m.





RF power output is 5 watts with 12 volts input power, but it can handle up to 15 volts. However, the transceiver can be powered off a 9-volt battery in a pinch if needed. Speaking of batteries, this little guy even has room to install an internal lithium ion battery pack! Current consumption during receive is about 60 milliamps with the display backlight on and only about 45 milliamps when the backlight is off. During transmit, the HT-1A draws 1 amp.

No internal speaker is provided with the HT-1A, however there is plenty of room inside the enclosure to install a small speaker and audio amplifier. I used a tiny external LiPo powered amplified speaker and a set of headphones to keep things simple.

The HT-1A has some great features for such a small and affordable QRP transceiver. These include: 16 user-programmable memory channels, built-in keyer for iambic paddles, full break-in QSK, RIT, XIT, AGC, S-meter, and even side tone selection. The HT-1A can even automatically detect whether you are using paddles or a straight key. The built-in keyer is adjustable from 5-40 words per minutes and is set at 15 WPM by default.

I was able to easily fit it into a small rugged waterproof case along with a couple of single band telescopic whips for 20m/40m, a small 12v LiPo battery, headphones, a MK-11 Pocket Spy Micro Straight Key, and a bulldog BD6 Mini Iambic Key.

I had a blast with this compact QRP rig. It's just so easy and fun to use! With an interface consisting of only two buttons, two knobs and an on/off switch, you can learn to operate the HT-1A in just a couple of minutes and without ever reading the user manual. I think this ease of use makes it a great option for preppers who typically want a compact affordable emergency backup transceiver. Plus, you don't have to take much time to relearn the interface if you haven't used it in a long time.



The HT-1A from CRKITS should appeal to a wide demographic of ham enthusiasts, builders, beginners, preppers, SOTA, and especially the budget savvy ham crowd. If you fit into any of these categories, then I highly recommend you take a close look at this great little dual band 20m/40m CW transceiver.

**Kit Price:** \$150 USD

**Fully Assembled Price:** \$175 USD

**Available for purchase at the following links:**

<http://crkits.com/>

[https://qrvtrronics.com/CatHAM\\_Radio/Products/HT-1\\_CW.htm](https://qrvtrronics.com/CatHAM_Radio/Products/HT-1_CW.htm)





# SUMMER PORTABLE IN MAINE

By JOHN, KK4ITX

Maine has always been home for my XYL since she was born in Southern Maine and went to school there for the first bunch of years. We lived about 130 miles from the coast for the first 12 years together and then we moved to Minnesota..... way too far for a day trip so whenever we got back to the Northeast we of course had to make sure that the lobsters and clams were still as good as memory was.

After our 20 years in Minnesota we became Full Time RVers, wintered in Florida and traveled the country during the summers. This past summer was to be our Maine year and by golly it was a great choice. We left the RV in Florida and went to a Park Model at a campground in Wells, ME, just a few miles from Kennebunk Port and only 5-10 minutes from Wells Harbor and the beach on the Atlantic.

I believe that my XYL was born in the ocean as it seems to be the only place that appears to bring peace and serenity to her well being (and mine too).



Anyway, I had to change my Ham life around some to accommodate the transition from our normal RV lifestyle vs the tight fight for elbow room in a parking lot. I don't get around well anymore so I pretty much have to operate near where I park. I needed a quick up/down antenna with out the benefit of trees or the RV for support. Lots of things that I could have done if carry space was also not an issue.

So using what was on our KIA Soul (Tow Bracket) I fashioned an antenna mount and then mounted a Wolf River Coil on it. At a Tailgate, a friend located a 7+ft telescope antenna..... perfect. Not shown in the closeups of the mount is a ground wire to the car frame, it all worked perfectly.

Using a 25ft cable I'm able to position my chair/table & rig wherever the shade may be. For this day I set up in the back seat and was able to make contacts with a Special Event in Indiana, the Maritime Net (MO) and a few others all with about 4.5w SSB (sorry). As I remember it was yet another spotless (sun wise) day and the bands were super quiet.



One of these days I'll be able to also deal with CW, getting close now but not quite ready for the show! Seems to be my hearing that's in my way, I can send 15-20wpm @ 90+ % correct but can not yet copy nearly that well, but I try using my homebrew "Thumb Key" seen behind the mic in the rig photo. It is a momentary push button switch mounted in a 1/2" PVC pipe about 5" long and fits the hand well too.



My QRP rig is an XIEGU X1M (80-10) and is mounted within an ammo box from Walmart and has a 7ah SLA battery, SWR/PWR/Tuner and a 3D printed power panel with 12v and 5v outlets that I designed with the help of another local Ham with his 3D printer. The coil coarse adjustment for frequency is made by moving the larger white collar up or down on the coil a number of "clicks", I then fine tune with the YouKits tuner.



I left the bracket and coil on the hitch for the season and just removed the antenna and coax for traveling around the area. This setup allows me to be able to be QRP on battery anywhere in a matter of a few minutes with minimal effort.

I met the folks that make the coils at a Hamfest in Onalaska, WI a few years back, saw it, heard it work and bought one.... I do not have a pecuniary interest in the company. You can look them up here: <http://www.wolfrivercoils.com/>.

Whoops, gotta go, XYL's coming back from the beach ! 73,  
John Leahy, KK4ITX #7249





# MEMBER SPOTLIGHT



Each month one of our members is randomly selected and asked to share their ham radio biography with all of us. Questions or comments should go to Paul, KD2MX.

DISCLAIMER: Any views expressed in this section are those of the submitting member and may or may not be those of the NAQCC or its officers.



## TOM GORRILL, W1PQO, #9388

Like many hams, my interest in the hobby began when I was around 10 years old. My Dad and I built a shortwave receiver as well as a VOM meter. My dad owned a business and taught engineering at the University of Maine, so the time he spent with me on these projects was precious, creating fond memories. But, as talented as he was, my Dad could not master Morse code. This motivated me to learn it!

After much practice, I obtained my Novice ticket as WN1PQO in 1970. The ticket lapsed as I became busy with other interests, but after I earned a Civil Engineering degree and started my first job, my interest in the hobby revived and I passed my General Exam at the FCC in Boston (13 wpm!) and was licensed as N1DCH. I was active for awhile, but again my activity waned as family and career demands increased. Before I retired, I became nostalgic for my former call sign, so I applied for and was assigned, my old call sign without the N—W1PQO.

In 2015 I sold my interest in my Civil Engineering firm, retired, and moved to St. George, Maine. I was determined to get back into ham radio. The first thing I did was to upgrade to Extra and get back on the air, trying get the the fist back in shape. My primary mode of interest has always been CW, as well as QRP, and I was delighted to find the NAQCC is now devoted to both!

I am an active hiker, particularly with the Maine Appalachian Trail Club (MATC) and a friend of mine, AE5KA, introduced me late in 2017 to SOTA, which is ideal for me as it combines two of my favorite

hobbies. My SOTA contacts are all CW, all using the KX-2, but I hope to try the QCX I built this coming year as well. One of my favorite CW QRP QSOs was with a station in Italy who was running 800 watts with an antenna farm. After we exchanged our signal reports, I told him I was QRP. He responded that the propagation must be really good for the 5 watts to work, but I was grinning, thinking of David vs Goliath, not to mention how much less costly my station is! My son and daughter are also hams, N1ZAS and KB1WAJ respectively, but both are busy with their careers and friends, so are not currently active.



# NAQCC SPRINTS

**CURRENT MONTH'S SPRINT:** We have two fun sprints scheduled for this month. First up is our regular monthly sprint 0030-0230 Z on June 12. That's the evening of Tuesday, June 11 here in North America. A week later that is followed with one of our special semi-annual milliwatt sprints on June 20, 0030-0230 (Wednesday the 19th in North America). If you haven't tried one of our milliwatt sprints before you might really be surprised to see what you can do with just a single watt or less. Complete information about these sprints can be found at <http://www.naqcc.info/sprint/sprint201906.html> and <http://www.naqcc.info/sprint/sprint201906mw.html>

Complete sprint rules and instructions on how to submit your log can be found at [http://naqcc.info/sprint\\_rules.html](http://naqcc.info/sprint_rules.html). On that page you will also find information about the different computer loggers that are supported for our sprints. The membership data files for those supported loggers can be downloaded at <http://naqcc.info/contests.html>. **Please be sure to always get the latest membership data for your logger about a day before the sprint.** A complete schedule for our upcoming sprints can be found at [http://naqcc.info/sprint\\_sked.html](http://naqcc.info/sprint_sked.html).

**LAST MONTH'S SPRINT RESULTS:** Only 91 logs were submitted for our May sprint. Travel to the Dayton Hamvention might have had something to do with that lower than normal number. Participants reported fairly good conditions in most locations and even 20-meters was open for a while and was a nice change from recent months. Complete sprint results, including some great soapbox comments, can be found at <http://www.naqcc.info/sprint/sprint201905.html>. High scores can be seen in the tables on the next page.

We would especially like to welcome our first-time sprint loggers and hope that they will return to participate often: AB8SV KY5M N4API WA6YPE

**PARTICIPATION ELIGIBILITY:** Remember that participating in a combination of sprints and challenges will make you eligible for the top-tier prizes in our anniversary drawing in October. Eligibility details can be seen on the page for last year's drawing at [http://www.naqcc.info/prize\\_drawing\\_14th\\_anniv.html](http://www.naqcc.info/prize_drawing_14th_anniv.html)

SWA STRAIGHT KEY CATEGORY			
Division	1st	2nd	3rd
W1	WB1GYZ	KN1H	K1IEE
W2	W2SH	KA2KGP	WA2JSG
W3	K3JZD	K3ESE	KE3V
W4	KB4QQJ	WT4U	N4OW
W5	KG5HCF	-	-
W6	WK6L	-	-
W7	KC7DM	KF7WNS	-
W8	WB8LZG	NF8M	W4XX
W9	WB9HFK	K9DRP	KB9BVN
W0	N8LA	AA5LH	NN0SS
Canada	VA3NU	-	-
DX	-	-	-

SWA BUG CATEGORY			
Division	1st	2nd	3rd
W1	-	-	-
W2	-	-	-
W3	K3WWP N3LPJ (TIE)	-	-
W4	K3RLL	-	-
W5	NF5U	-	-
W6	-	-	-
W7	-	-	-
W8	K8NGW	-	-
W9	AA9L	N9SE	-
W0	KD0V	-	-
Canada	VE3IDS	-	-
DX	-	-	-

SWA KEYER/KEYBOARD CATEGORY			
Division	1st	2nd	3rd
W1	KB1M	-	-
W2	N2ESE	-	-
W3	-	-	-
W4	KB9ILT	K7EK	N4MJ
W5	NA5N	WD5RS	K5MBA
W6	W6JIM	-	-
W7	KF7Z	-	-
W8	W8EWH	WA8SAN	K3CTN
W9	K9CW	AB9BZ	-
W0	AA0W	K8UDH	WD0K
Canada	VE3GNU	-	-
DX	-	-	-

GAIN CATEGORY			
KEY	1st	2nd	3rd
SK	-	-	-
BUG	-	-	-
K/K	K4BAI	-	-

FIRST TIME ENTRANT HIGH SCORE			
KEY	1st	2nd	3rd
SK	N4API	-	-
BUG	-	-	-
K/K	KY5M	AB8SV	-
SPRINT PRIZE DRAWING WINNER			
K3EMS			



	Current Month	Previous Month	All-Time Record	Record Date
Logs	91	107	217	4/17
Participants	134	146	269	2/13
Total QSOs	1191	1585	3154	4/17
Hour 1 QSOs	670	863	1704	4/17
Hour 2 QSOs	521	722	1450	4/17
20m QSOs	169	46	1232	8/13
40m QSOs	924	1178	2203	4/17
80m QSOs	98	361	1417	2/13
Avg QSOs/Station	13.1	14.8	19.3	9/11

**SPRINT HONOR ROLL:** We honor the following members for their outstanding participation over the years in our regular sprints. Exact counts can be seen at [http://naqcc.info/sprint\\_dates.html](http://naqcc.info/sprint_dates.html).

NUMBER OF SPRINTS	MEMBERS
50+	NU7T(SK) KB8FE KQ1P NQ2W WY3H AA7CU N8QY K9OSC KB0ETU K6CSL K9EYT N5GW AK3X K2YGM KC2EGL VE5BCS(SK) N8LA KN1H K4ORD KF7WNS N4MJ WK6L KD3CA AB8FJ N2CN WI5H NF5U
75+	K4NVJ KE5YUM KB3AAG WB8ENE K4KRW N2ESE VE3FUJ WX4RM WA8SAN NO2D N0TA WG8Y N8BB AA9L NA4O WD0K K6MGO KA9FQG
100+	KD2MX NF8M K4JPN K3RLL K1IEE KD0V WA2JSG N4FI W4DUK
125+	W9CC W2SH WB8LZG N8XMS K4BAI KU4A
150+	W2JEK KA2KGP K3WWP



# NAQCC CHALLENGES

**CURRENT MONTH'S CHALLENGE:** In June we have two challenges to enjoy. (Although you can only earn 1 participation point.) Our month-long challenge is an alphabet challenge that comes from a rather bazaar historical event - a 1919 tidal wave of molasses that killed 21 people! Our other challenge this month is our annual Field Day challenge. You can find all the details about these challenges at <http://naqcc.info/challenges/challenges201906.html> and <http://naqcc.info/challenges/challenges201906fd.html>

**NEXT MONTH'S CHALLENGE:** The July challenge is an alphabet challenge related to good old Uncle Sam. Details can be found at <http://www.naqcc.info/challenges/challenges201907.html>.

Complete information about our challenges including a helpful tutorial on how to organize your work for an alphabet challenge can be found at <http://naqcc.info/challenges.html>. Detailed general rules for our challenges can be found at [http://naqcc.info/challenges\\_rules.html](http://naqcc.info/challenges_rules.html).

**LAST MONTH'S CHALLENGE:** The deadline for submissions for our May Paraset Radio Challenge is still a few days away but preliminary results can be seen at <http://www.naqcc.info/challenges/challenges201905.html>. Final results will also be available there shortly after the 10th of the month.

**PARTICIPATION ELIGIBILITY:** Remember that participating in a combination of sprints and challenges will make you eligible for the top-tier prizes in our anniversary drawing in October. Eligibility details can be seen on the page for last year's drawing at [http://www.naqcc.info/prize\\_drawing\\_14th\\_anniv.html](http://www.naqcc.info/prize_drawing_14th_anniv.html)

**CHALLENGE HONOR ROLL:** We honor the following members for their outstanding participation over the years in our monthly challenges. Exact counts can be seen at [http://www.naqcc.info/challenges\\_schedule.html](http://www.naqcc.info/challenges_schedule.html).

NUMBER OF CHALLENGES	MEMBERS
25+	N9SE KU4A K9OSC KD0V WA2FBN WI5H PA9CW NF1U WY3H N1JI VE3HUR G3JFS N1LU KJ4R KD2MX AK3X VE3DQN KA5PVB
50+	PA0XAW VE3FUJ NU7T(SK)
75+	K1YAN
100+	K1IEE
125+	N8XMS W2JEK
150+	K3WWP



# NAQCC AWARDS

We have an extensive list of awards that you can earn. Complete details can be found at <http://naqcc.info/awards.html>.

## FEATURED AWARD: ALPHABET PREFIX AWARD

This month's featured award is a simplified version of CQ Magazine's popular WPA award. The goal is to work as many letter/number combination prefixes as possible using QRP CW and SWA. There are two categories for the award - World Prefixes, and USA Only Prefixes. Handy tables showing all of the possible prefixes in both categories are available for downloading from the award web page. Basic awards are earned with 200 world prefixes or 50 USA prefixes and certificates are issued at the 400 and 100 prefix levels. Complete details on this award can be found at [http://www.naqcc.info/awards\\_wpxswa.html](http://www.naqcc.info/awards_wpxswa.html).

## RECENTLY ISSUED AWARDS:

None





# NAQCC QRS/QRQ NETS

We have a number of nets (QRS = slow speed, QRQ = higher speed) designed to help people build up their CW operating skills. Complete information about these nets can be found at [http://naqcc.info/cw\\_nets.html](http://naqcc.info/cw_nets.html). Questions should be directed to Net Manager Wayne, NQ0RP.

## NAQCC NET SCHEDULE

Net	Local Time	UTC	Freq +/-	Primary NCS
FarnsWord QRQ Round Table Nets (FRN)	Sunday 6:00 PM PDT 7:00 PM PDT 8:30 PM PDT	Monday 0100 Z 0200 Z 0330 Z	5348 KHz ch2 3555.5 KHz 7046 KHz	60/80m JB, NR5NN (in CA) 80/40m Rick, N6IET (in CA)
East Texas QRS Net (ETN)	Monday 7 PM CDT	Tuesday 0000 Z	3564 KHz	Allen, KA5TJS (in TX)
Midwest QRS Net (MWN)	Monday 7:30 PM CDT	Tuesday 0030 Z	7031 KHz	Bob, W0CC (in KS)
Rocky Mtn Regional/Continental 20/40 QRS Nets (RMRc)	Tues & Thurs 4:00/4:30 PM MD	Tues & Thurs 2200/2230 Z	14060/7062.5 KHz	Dale, WC7S (in WY)
Pacific Northwest 80 m QRS Net (PNW80)	Thursday 7 PM PDT	Friday 0200 Z	3556.5 KHz	Stewart, KE7LKW (in WA)

**Note:** On the rare occasions that there is a conflict between one of our scheduled nets and one of our regular sprints the sprint will take precedence.

## NET CONTROL STATION REPORTS

### NAQCC FarnsWord QRQ Round Table Nets (FRN)

Sunday evenings 6:00 PM PDT, which is Monday 0100 UTC, on 5348 kHz (Ch 2)  
 Sunday evenings 7:00 PM PDT, which is Monday 0200 UTC, on 3555.5 or 3336 kHz +/-  
 Sunday evenings 8:30 PM PDT, which is Monday 0330 UTC, on 7046 kHz +/-  
 60/80m NCS - JB NR5NN (California); 80/40m NCS - Rick N6IET (California)

### NAQCC FarnsWord QRQ Round Table Nets

It's starting to look like we should have FRN/40 closer to 0300z/8pm, now. 6pm is too early with too much D layer absorption, with the later sunsets. I'm making it so. Consider yourselves notified.

FRN/60 at 5PM PDT Sunday (0000 UTC Monday) on 5348 kHz (Ch 2)  
 May 13, 5348 kHz, 0000-0054z; fxF2 @ 0030z = 5.35 MHz, foEs = 4.6 MHz  
 QNS (5) Rick N6IET NCS, Roy K6GVG, Wolf A16SL, Mike KE6EE, Brian K0DTJ

JB took the evening off to treat several mothers to dinner.

We had fair signals with good NVIS for closer stations.

All but Wolf switched to using bugs, and I think Wolf promised to dust off his bug for next week. This was a good rehearsal for the Bug Roundup next weekend, sponsored by W6SFM in Sacramento.

FRN/40 at 8PM PDT Sunday (0300 UTC Monday) on 7046 kHz  
May 13, 7046 kHz, 0100-0136z; fxF2 @ 0100z = 5.2 MHz, foE/foEs = 2.25/3.1 MHz;  
QNS (5) Rick N6IET NCS, Mike KE6EE, Wolf AI6SL, Roy K6GVG, PBRick N7HRK/m

Yes, let's move FRN/40 two hours later to 0300z (8pm PDT) starting next Sunday. I'll ask Wayne and Paul to change the schedule on the NAQCC website.

Yes, we had no NVIS, and close stations couldn't copy each other. But I could copy Wolf and eventually Mike and PBR. Wolf relayed between me and Roy.

PBR's signal came up from very weak to S7 toward the end. It was great hearing him. As usual, he had great ears (no noise) and was able to copy each of us.

FRN/80 at 8:30PM PDT Sunday (0330 UTC Monday) on 3556 kHz ±  
May 13, 3556 kHz, 0330-0424z; fxF2 @ 0400z = 6.1 MHz, foEs = 4.1 MHz  
QNS (6) Rick N6IET NCS, Wolf AI6SL, Mike KE6EE, Rob N6KIX, Roy K6GVG, JB NR5NN

We had strong signals all around! Great NVIS!

The FRN/40 time change to 8pm will, sadly, mean that I won't be able to check into Rob's PARG net at that time (on 3545 kHz), and he might not be able to check into FRN/80. We'll save a seat for you, Rob, just in case you can check in late.

JB did manage to extract himself from the mothers in his life during the last round and join us. He had worked the Weekend Sprintathon (SKCC WES) and had to switch gears to use his keyer. His grandsons lost their soccer game zip to 1, yesterday. :-)

We listed our favorite TV or video streaming programs. Wolf and I both enjoy "60 Minutes". Rob and I enjoy many PBS documentaries and mysteries. Mike doesn't watch TV per se but sometimes watches educational videos. My kitty enjoys watching funny cat videos on YouTube. I didn't write down anything for Roy.

Again, Mike, Rob, Roy and I switched to our bugs.

Speaking of bugs, I acquired an old McElroy P-500 bug for free from a box of "junk" at a PAPA (repeater group) breakfast Saturday morning. That's the WWII model that has a 5-lb cast iron base. I hope to have it cleaned up and working by the Bug Roundup this weekend to use with my DX-60B.

Don't forget the NAQCC sprint at 0030-0230z on Wednesday evening (local)! I'll be building myself an Elecraft K2 kit this fall to use with the (stealth) rooftop dipole for QRP operations, once my neighbor moves out and takes his !@#\$\$%& plasma TV with him.

FRN QNS Reports for March, April and May, 2019

Mar 4, 5348 kHz, 0000z; (8) NR5NN, N6KIX, K6GVG, N6IET, AI6SL, KW6G, AI6U, K6JJR  
Mar 4, 7046 kHz, 0100z; (8) N6IET NCS, NR5NN co-NCS, N7HRK/m, K6JJR, AI6U, KW6G, AI6SL, K6GVG  
Mar 4 3556 kHz, 0430z; (4) N6IET NCS, AA6GA, KW6G, AI6SL

Mar 11, 5348 kHz, 0000z; (8) NR5NN, N6IET, KW6G, K6JJR, AI6LS, K6GVG, W7SAG, WI6O  
Mar 11, 7046 kHz, 0100z; (4) N6IET, N7HRK/m, K6GVG, WI6O  
Mar 11 3556 kHz, 0430z; (5) N6IET NCS, AI6SL, N6KIX, KW6G, AI6U

Mar 18, 5348 kHz, 0000z; (5) NR5NN NCS, KW6G, N6IET, K6GVG, K6JJR  
Mar 18, 7046 kHz, 0100z; (3) N7HRK/m NCS, N6IET, K6GVG  
Mar 18 3556 kHz, 0430z; (4) N6IET NCS, KE6EE, K6GVG, AI6SL

Mar 25, 5348 kHz, 0000z; (6) NR5NN NCS, N6IET, K6GVG, KE6EE, N6KIX, K6JJR  
Mar 25, 7046 kHz, 0100z; (4) NR5NN, K6GVG, N6IET, N6KIX  
Mar 25 3556 kHz, 0430z; (5) N6IET NCS, KW6G, K6GVG, KE6EE, N6KIX

Apr 1, 5348 kHz, 0000z; (5) NR5NN NCS, KE6EE, AI6SL, KW6G, N6IET  
Apr 1, 7046 kHz, 0100z; (1) N6IET NCS  
Apr 1, 3556 kHz, 0330z; (5) N6IET NCS, NR5NN, AI6SL, KW6G, KE6EE

Apr 8, 5348 kHz, 0000z; (5) AI6SL NCS, K6GVG, N6IET, KE6EE, AI6U  
 Apr 8, 7046 kHz, 0100z; (4) N6IET NCS, K6GVG, AI6SL, K6JJR  
 Apr 8, 3556 kHz, 0330z; (4) N6IET NCS, KW6G, K6GVG, AI6SL

Apr 15, 5348 kHz, 0000z; (6) NR5NN NCS, AI6U, K6GVG, N6IET, KW6G, AI6SL  
 Apr 15, 7046 kHz, 0100z; (5) NR5NN NCS, N6IET, AI6SL, N7HRK/m, K6GVG  
 Apr 15, 3556 kHz, 0330z; (5) N6IET NCS, KW6G, AI6SL, K6GVG, N6KIX

Apr 22, 5348 kHz, 0000z; (7) NR5NN NCS, WU7F, KE6EE, N6IET, K6GVG, AI6SL, K0DTJ  
 Apr 22, 7046 kHz, 0100z; (6) NR5NN NCS, N6IET Co-NCS, K6GVG, N7HRK/m, AI6SL, WI6O  
 Apr 22, 3556 kHz, 0330z; (6) N6IET NCS, NR5NN Co-NCS, K6GVG, AI6SL, KE6EE, KW6G

Apr 29, 5348 kHz, 0000z; (7) NR5NN NCS, W7SAG, KW6G, AI6SL, K6JJR, N6IET, K6GVG  
 Apr 29, 7046.75 kHz, 0100z; (3) NR5NN, K6GVG, N6KIX  
 Apr 29, 3556 kHz, 0330z; (8) N6IET NCS, KW6G, K6GVG, AI6SL, N6KIX, WI6O, KE6EE, K0DTJ

May 6, 5348 kHz, 0000z; (4) NR5NN/m NCS, N6IET Co-NCS, KW6G, AI6SL  
 May 6, 7046 kHz, 0100z; (2) N6IET NCS, NR5NN/m co-NCS  
 May 6, 3556 kHz, 0330z; (6) N6IET NCS, KW6G, K0DTJ, KE6EE, NR5NN/m, WI6O

May 13, 5348 kHz, 0000z; (5) N6IET NCS, K6GVG, AI6SL, KE6EE, K0DTJ  
 May 13, 7046 kHz, 0100z; (5) N6IET NCS, KE6EE, AI6SL, K6GVG, N7HRK/m  
 May 13, 3556 kHz, 0330z; (6) N6IET NCS, AI6SL, KE6EE, N6KIX, K6GVG, NR5NN

May 20, 5348 kHz, 0000z; (8) N6IET NCS, K6GVG, KE6EE, AI6SL, KW6G, AI6U, K6JJR,, WI6O  
 May 20, 7046.5 kHz, 0300z; (10) N6IET NCS, AI6SL, WI6O, KE6EE, K6JJR, N7HRK/m, K6GVG, KW6G, K0DTJ, AI6U  
 May 20, 3556 kHz, 0340z; (8) AI6SL NCS, K6JJR, WI6O, KW6G, K0DTJ, K6GVG, N6IET, AI6U

May 27, 5348 kHz, 0000z; (5) NR5NN NCS, N6IET, K6JRR, KE6EE, K6GVG  
 May 27, 3555.5 kHz, 0020z; (5) NR5NN, K6JJR NCS, N6IET, K6GVG, KE6EE  
 May 27, 7046 kHz, 0300z; (7) N7HRK/m NCS, N6IET, K6GVG, NR5NN, KE6EE, AI6SL, WI6O  
 May 27, 3556 kHz, 0330z; (7) N6IET NCS, K0DTJ, AI6SL, KE6EE, K6GVG, NR5NN, WI6O

72, 73 and 77,  
 Rick N6IET (and JB NR5NN by proxy)  
 JB NR5NN

#### NAQCC East Texas QRS Net (ETN)

Monday evenings 7:00 PM CDT, which is Tuesday 0100 UTC, on 3561 kHz +/-  
 Main NCS - Allen KA5TJS (Texas)

5/7/2019 QNI(3) NCS KA5TJS KE5YGA KA5YUM

I called the net on 3.564kc and had to make 2 calls before I got KE5YGA. After the first call I announced a QSY to 7.065kc. Andy was about 579 and he gave me 559, I was QRP. When Andy answered we went ahead and moved to 40 meters. I made one more call and KE5YUM came in 579. He was QRP and using his new EFHW 40 meter antenna. Andy was now 599. 40 meters was much better tonight than 80 was. We did have to go down 1 kc due to digital QRM on 7.064kc.

5/14/2019 QNI(3) NCS KA5TJS KE5YGA KA5YUM

YUM was 559 tonight on 80 meters with lots of QRN/QSB. Managed to copy most. When I went to YGA (Andy) we went to 40 meters and he was 599 QRO. QRM was bad on 7.064 so we went up 1. Looks like it is time to go to 40 meters. Next week we will start on 7.068khz and see how that works. Wayne, please change the net frequency to that for now and we will see how it goes. The digital QRM has been back around there so not sure if we can hold the freq.

5/21/2019 QNI(1) NCS KA5TJS

Did not hear anyone tonight on 7.068khz. KE5YGA called me and said he was late and I had already went QRT for the night. I had to go kill a snake that was trying to climb up to a Blue Bird nest that the XYL spotted. Propagation has been really bad this week.

5/28/2019 QNI(2) NCS KE5YGA KE5YUM

I did not make the net last night but got a report from KE5YUM that he heard KE5YGA calling me but could not hook up. More bad propagation. Hopefully it will get better as the summer progresses!

---

**NAQCC Rocky Mountain Regional/Continental QRS Nets (RMRc)**

Tuesday/Thursday at 4:00 PM MDT, which is Tuesday/Thursday 2300 UTC, on 14060 kHz  
Tuesday/Thursday at 4:30 PM MDT, which is Tuesday/Thursday 2330 UTC, on 7062.5 kHz.  
Main NCS - Dale WC7S (Wyoming)

No Report

---

**NAQCC MIDWEST QRS Net (MWN)**

Monday evenings 7:30 PM CDT, which is Tuesday 01:30 UTC, on 7031 kHz +/-  
Main NCS - Bob W0CC

2019/05/06 No Operation secondary to ongoing severe thunderstorm/lightening

2019/05/13 QNI W0CC

There was a lot of activity with station calling AH2HA on 7.031. Called above and below that frequency; however, the signal was probably lost in the DX chase!

2019/05/20 QNI W0CC

QNI S-6 Active Thunderstorm. Several stations on and/or near 7.031 MHz so, had to "move around" to avoid QRM. Picked-up college son, KD0WEZ, EE Major, yesterday and hope that he can help repair the storm damaged antenna. Suspect that next week will be great!

2019/05/27 QNI W0CC

S+ QRN. Heard faint QSO's on adjacent frequencies but could not pick up their call sign to call. Suspected that Memorial Day would be slow. Next week!

Bob W0CC

---

**NAQCC Pacific Northwest QRS 80 Meter Net (PNW80)**

Thursday evenings 7:00 PM PDT, which is Friday 0300 UTC on 3556.5 kHz.  
Main NCS - Stewart KE7LKW (Washington State)

05-10-2019 PNW QNI (6) NCS KE7LKW, N7KC, AD7BP, WB4SPB, WB7WHG, KG7JEB.

05-17-2019 PNW QNI (7) NCS KE7LKW, N7KC, AD7BP, WB4SPB, WB7WHG, KG7JEB, K7JUV

2019/05/24 (0200z) QNI 8, NCS wb4spb, ke7lkw/7, kg7jeb, n7kc, ad7bp, n0da, k7juv, nb6m

05-31-2019 PNW QNI (6) NCS KE7LKW, N7KC, AD7BP, WB4SPB, KG7JEB, K7HZ

Stewart KE7LKW, Randy WB4SPB, George WB4SPB





# HAM QUIPS



Dick Sylvan, W9CBT, #2062, has been a QRP/CW operator for a long time. He is also a very accomplished ham radio cartoonist and his work has appeared previously in the K9YA Telegraph newsletter. His book "HI HI - A Collection of Ham Radio Cartoons" is available at [www.lulu.com](http://www.lulu.com).

## MORSE TIPS & QUIPS



AFTER YOU LEARN MORSE CODE,  
BEFORE YOU KNOW IT, YOU'LL  
BECOME A "CW HOUND"!



# NAQCC CHAPTER NEWS

The North American QRP CW Club currently has nine local chapters - Western Pennsylvania, West Virginia, West Florida, Central Texas, Illowa, Delmarva, Downeast Maine, Long Island, and Florida - but we would be more than happy to expand on that list. Chapters are more or less independent local gatherings organized by NAQCC members in a geographical area and subject to a list of guidelines from the NAQCC. They provide opportunities to have fun and to promote our parallel passions of QRP and CW. If you are interested in forming a local chapter please contact Club President Paul, N8XMS.

If your chapter is planning a portable operation activity and would like to have it promoted on the club email list or in the newsletter, send an email with the subject "NAQCC Portable Operation" and with the exact wording of the announcement to Vice President John, N8ZYA, at the email address listed on the last page about a week before the operation. Please be sure to include the UTC time for the event and not just the local time.

A report about your chapter activity should appear here. Please send them to KD2MX or N8XMS at the email addresses listed on the last page.

NAQCC chapters located in the United States are welcome to use the NAQCC Club call, N3AQC for their special operations. Please contact call sign trustee Paul, N8XMS, to schedule the use of N3AQC.

Chapter Reports Begin On The Next Page

## NAQCC LONG ISLAND CHAPTER



Items in this section are from the Long Island Chapter unless otherwise credited. Questions and comments should go to Howard, WB2UZE.

We had a smaller than usual turnout for our May 17 outing even though the weather was comfortable, but it was certainly easier to manage and had a totally different feel than previous outings. We started out the day at the diner with 4 of us over good food and conversations and then headed down to Robert Moses State Park at the beach within sight of the Fire Island Lighthouse.

The following members came down:

Bob KD2NFS  
Walt W2TE  
Sam W2JDB  
Kevin KC2KC  
Russ W2FRB  
Rich K2UPS  
Howard WB2UZE

Tony KB2OMC was delayed as his car hit a goose on the way. Driver OK and car not too bad....goose recuperating in a shelter. Tony kept going and he tried a new antenna upon arrival.

Tony WV2C came down with his metal detector and showed how it worked on the sand but we only found bottlecaps...oh well.

John W2XS set up his KX2 on batteries into a 40m dipole fed with twin lead. Sam W2JDB also put up his vertical with home brew coil.

A few QSOs were made domestically and although we heard Europe on 20m, the band was not yet strong enough to reach there with only 5-8 watts. A few photos of the day are attached.

We will take a break on QRP outings from now and over the summer and pick up again in the fall.

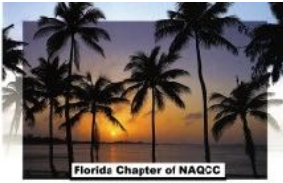
Howard WB2UZE







## NAQCC FLORIDA CHAPTER



Items in this section are from the Florida Chapter unless otherwise credited. Questions and comments should go to Steve, WB4OMM.

The Florida Chapter website is <http://wb40mm.com/naqcc-fl-chapter>.

### NAQCC FLORIDA CHAPTER MEMBER NEWS: May 2019



***An All-Time New One!! - No, not ATNO DX!***

On Friday, May 10, 2019 the Florida Chapter of NAQCC arrived at a new local park. We held our latest "Operation in the Park" at River Breeze Park in Oak Hill, Florida.

The unspoiled beauty of River Breeze Park offers visitors a glimpse back into the early, unhurried days of Florida's history. Situated on the historic and fabled Indian River, the park is 35 acres with five acres directly on the river. The surrounding waters were once an abundant food source for the early Indian tribes, as evidenced by the shell middens (mounds of oyster and clam shells). After Florida's settlement, the fertile shores became a thriving citrus grove, known to produce some of the best citrus products in the world.

River Breeze Park offers a panoramic view of nature's splendor and provides an excellent vantage point for bird watching. An excursion into a scenic balance between people and nature. Bringing our Amateur Radio equipment is quality time, well spent!

This Park features fishing, a playground and a free boat launch; restrooms and water fountains. Multiple covered pavilions with picnic tables, and a long wooden walkway pier round out the amenities. This trip we had a total of 6 members/3 operators and a guest in our group to include: Steve WB4OMM #5274; Art WB4MKN #5274; John KD4JS #8019; Nikki KM4SBQ #8749; Wally KG4LAL #6278; Phil NW4X #8927; and John KI4LOF (no number yet).



**Steve WB4OMM #5319**

Steve's setup included his Elecraft KX-3 and a ground mounted Hamstick vertical for 20 meters with a Vibroplex Code Warrior Jr and GenLog. Steve worked 2 members ultimately on 20M - Art WB4MKN #5274 (yeah, 150 feet away - what DX that was!) and our dependable ally Curt WA2JSG #3457 in NJ. Signals were nil on 40M for most of the time he was on the air, so he went to 20M so he wouldn't get skunked!





**Art WB4MNK #5274**

Art's Station consisted of an Elecraft KX1 at 4 watts, and a 30 FT vertical with 4 radials.

He made the following 6 contacts with 4 members, and two non-members:

- WB4OMM - Steve 20 meters # 5913 (50 yards away 😊) State FL - BIG DX!
- KB1M - Walt - 20 Meters # 8058 - State NH
- K2WK - Walt - 20 Meters - Not a member - State VA
- N4MJ - Glenn - 20 Meters # 6587 - State TN
- AB4QL - Barry - 20 Meters # 777 - State AL
- K1PU - Hank - 20 Meters - Not a member - State CT



**Phil NW4X #8927**

**Wally KG4LAL #6278**

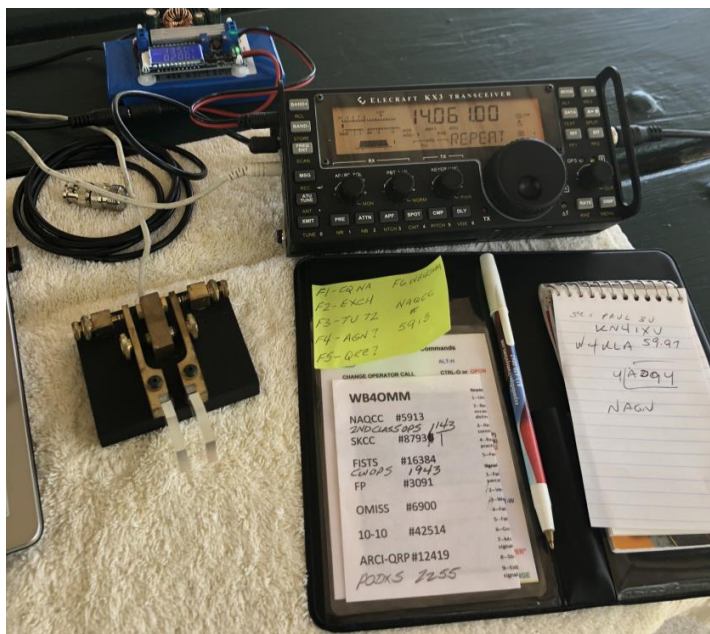
Wally's rig was his usual Yaesu 817, running 4 watts SSB to an off-center fed wire, worked 40, 20, 17 & 10 meters with no contacts to report. It was a nice morning and a fine location.

**Nikki KM4SBQ #8749** helped Steve with his setup/take down and photos.

**John KD4JS #8019** - As usual, John took care of the QRPSPTS postings for Steve. And brought a new toy for Steve to play with - then he gave it to Steve! Wow! Thanks John!

**Phil NW4X #8927** stopped by to visit and talk QRP/CW.....

**John KI4LOF** is in the learning stages and listened a lot!



**A Close-up of the WB40MM Station - note the new "toy" at the top left.... a voltage "booster" regulator provided by John KD4JS**





*It worked great! E-Bay, \$5.95!!*



*Close look at Art WB4MKN's station - nice!*

*WX turned out to fine! A great park!! A great time!!!*

*Many thanks to those who listened for us and helped make this another successful NAQCC-FL event!*

---

***WE'RE OFF FOR THE SUMMER!!!  
See you in the Fall (September)***

**Visit our Web Page:**

<http://wb4omm.com/naqcc-fl-chapter/>

***Look for our announcement!***

*7/2/73 to all* – **Steve WB4OMM, #5913 - [NAQCCFL@yahoo.com](mailto:NAQCCFL@yahoo.com)**

## NAQCC WEST FLORIDA CHAPTER

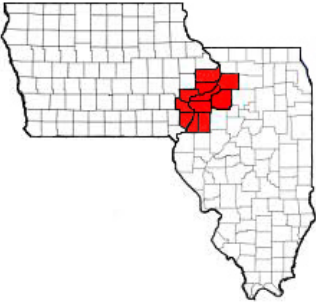


Items in this section are from the West Florida Chapter unless otherwise credited. Questions and comments should go to Ron, N9EE.

The chapter's web site is at <https://www.facebook.com/groups/967110089994401/>.

No report available.

## NAQCC ILLOWA CHAPTER



Items in this section are from the Illowa Chapter unless otherwise credited. Questions and comments should go to Tim, N9BIL.

The Illowa Chapter operates in the “Quad Cities” area of Davenport, IA / Moline, IL.

The Illowa Chapter website is at <https://sites.google.com/site/naqccillowa2/>.

No report available.



## DOWNEAST MAINE CHAPTER



Items in this section are from the Downeast Maine Chapter unless otherwise credited. Questions and comments should be directed to Jeff, KA1DBE.

The chapter is located in the Hancock and Washington counties area of Maine.

No report available.

## NAQCC WESTERN PENNSYLVANIA CHAPTER



Items in this section are from the Western Pennsylvania Chapter unless otherwise credited. Questions and comments should go to John, K3WWP.

No report available.

## NAQCC WEST VIRGINIA CHAPTER



Items in this section are from the West Virginia Chapter unless otherwise credited. Questions and comments should go to John, N8ZYA.

The chapter's web site is at <http://n8zyaradioblog.blogspot.com/>.

No report available.

## CENTRAL TEXAS CHAPTER



Items in this section are from the Central Texas Chapter unless otherwise credited. Questions and comments should be directed to Danny, N5DRG.

The chapter is located in the Austin, TX area and maintains a website at <http://www.naqcc-centraltexas.net/index.html>.

No report available.

## DELMARVA CHAPTER



Items in this section are from the Delmarva Chapter unless otherwise credited. Questions and comments should be directed to Bill, N3IOD.

The chapter is located in the Delaware-Maryland-Virginia area.

No report available.

# MEMBER SUBMISSIONS



This section is a forum for you to tell other members what you've been up to on the ham bands or to submit a short article dealing with some aspects of CW and QRP operation or equipment. Just about anything that would be of interest to our members would be welcomed. Send your items to our News Editor Paul, KD2MX.

DISCLAIMER: Any views expressed in this section are those of the submitting member and may or may not be those of the NAQCC or its officers.

From Gene, N5GW, #5353 —

When I was a young ham back in the early 1970s, I liked to operate CW on the Heathkit SB-102 transceiver I had assembled, one of their last tube rigs. However, since solid-state was beginning to replace the old tube gear, articles began to appear telling us how to use the newer technology. Many of the solid-state transmitter projects were oriented toward QRP partly because the available small-signal transistors could be battery powered. So I decided to try the new stuff.

At a local radio store I found an already assembled Heathkit HW-7, one of the first QRP CW solid-state transceivers. I snapped it up and hurried home. Initially I was very disappointed in its performance. While the 2-watt transmitter seemed to work well, the receiver was truly horrible - a regenerative receiver would have been better. However I was able to hear 20M signals on my doublet antenna.

Then I called a California station; he came right back with a fair signal report. I was amazed that he could copy my puny signal almost 2000 miles away.

Then came the real shocker: a few minutes later I picked up a signal from a VK in Melbourne, Australia. I thought "he will never hear my 2 watts that far away but I'm calling him anyway". I was absolutely stunned when he answered my call, reporting my signal to be weak but with good copy. It was as if I had turned on a flashlight and he could see it on the other side of the planet!

Since then I have used many QRP rigs and worked lots of DX, but I'll always remember that day in 1973 when I became hooked on QRP.





# NAQCC CLUB INFORMATION

## STATEMENT OF PURPOSE

From NAQCC President Paul Huff, N8XMS

Amateur radio has something for everyone. SSB, FM, AM, the digital modes, and QRO power levels all have their place in this great hobby and we certainly recognize the importance of these modes as well as the enjoyment that they give to many. But for a growing number of hams the challenge of *“doing the most with the least”* makes QRP (and QRPp) CW operating the greatest thrill available in amateur radio, and the North American QRP CW Club exists to promote this exciting facet of the hobby. As part of our focus we also encourage, but do not limit operators to, the use of simple wire antennas.

The NAQCC provides numerous opportunities for hams to enjoy QRP/CW operating. For contesters types we have a popular monthly 2-hour sprint that runs at relatively low CW speeds and at a fairly relaxed pace. Three special sprints also take place during the year for 160-meter and QRPp operators. For a month-long activity we offer our members a Monthly Challenge that can be anything from forming a list of words from the calls of stations worked, to making a prescribed number of contacts using home-brew gear. There is also an extensive awards program to recognize the significant QRP/CW accomplishments of our members.

We also serve as a resource for people who are just getting started in QRP and/or CW. Our slow-speed CW nets are a great place for beginners to practice Morse code under real on-air conditions. Beginners will also find a wealth of helpful information on our club website and we are more than willing to try to answer any questions about QRP and CW that you might have. An extensive monthly newsletter is filled with useful projects and news from fellow QRPers.

A number of local NAQCC Chapters offer opportunities to get together for in person socializing and QRP/CW activities. Portable operations are especially popular with the local chapters.

Whether you are a veteran ham radio operator who is looking for a new challenge in the hobby, or a beginner who is intrigued by the possibilities of QRP/CW communication, we cordially invite you to join us. Membership is free and the benefits and fun are significant.

The North American QRP CW Club was founded in 2004 by WY3H and K3WWP and now has over 9500 members world wide. Membership is free and anyone interested in CW/QRP operating is welcome. Complete information about the NAQCC, including a membership application, activities schedule, and useful resources, can be found on our website at <http://www.naqcc.info/>. Inquires can also be sent to

Club President Paul Huff, N8XMS  
9928 Eckles  
Livonia, MI 48150  
USA



Additional contact information can be found on the next page.

NAQCC CONTACTS		
NAQCC President Newsletter Editor	Paul - N8XMS	paul142857@gmail.com
NAQCC Vice President West Virginia Chapter	John - N8ZYA	jspiker58@gmail.com
Delmarva Chapter	Bill - N3IOD	william.hammond@mchsi.com
Downeast Maine Chapter	Jeff - KA1DBE	ka1dbe@arrl.net
Florida Chapter	Steve - WB4OMM	wb4omm@arrl.org
Western Pennsylvania Chapter	John - K3WWP	jsk3wwp@windstream.net
Central Texas Chapter	Danny - N5DRG	n5drg@naqcc-centraltexas.net
Illowa Chapter	Tim - N9BIL	n9bil@arrl.net
West Florida Chapter	Ron - N9EE	n9ee@tampabay.rr.com
Long Island Chapter	Howard - WB2UZE	wb2uze@yahoo.com
Help For Beginners	Brion - VE3FUJ	ve3fuj@wightman.ca
Member Submissions Member Spotlight	Paul - KD2MX	kd2mx@arrl.net
Facebook Page Manager	Jerry - K4KBL	digilink@gmail.com
NAQCC CW Nets	Wayne - NQ0RP	wayne.dillon@gmail.com

NOTE: These email address are not automatic links.  
They are given here in graphic form to avoid harvesting by spambots.

#### REPRINT POLICY

Unless otherwise stated in the article, local clubs and other ham radio organizations are free to reprint featured articles from this newsletter, provided appropriate credit is given to the North American QRP CW Club and the author of the article. If at all possible a link to the club website at <http://www.naqcc.info/> should be included.