

# NAQCC NEWS



ISSUE 188 FEBRUARY 2014



## KEY CLICKS

- ◆ **NEW RULE FOR SPRINT PRIZE ELIGIBILITY.** A new participation requirement has been added to the rules for the prize drawing that will be part of our 10th Anniversary Sprint in October of this year. There is now a set number of regular sprints and challenges that a member must participate in to be eligible for the prize drawing in October. You can see all the details in the *NAQCC 10th Anniversary* article on page 3.
- ◆ **N#A OPERATORS NEEDED FOR ANNIVERSARY CELEBRATION.** Our week-long celebration for the 10th Anniversary of the NAQCC will be October 13 through 19. (We are starting our week on Monday to avoid a number of major contests on the prior weekend.) A big part of our celebration will once again be the N#A special event stations that operate from all 10 US call districts. We need volunteers to put these special call signs on the air and it's not too early to sign up. It's a ton of fun! (Take a look at the soapbox comments from last year's operators in the *N#A Wrapup* article in the November 2013 newsletter at [http://naqcc.info/newsletter\\_185.pdf](http://naqcc.info/newsletter_185.pdf) to see just how much fun it is.) Please see the *NAQCC 10th Anniversary* article on page 3 for more information and for instructions on how to sign up to be an N#A operator.
- ◆ **ARRL CENTENNIAL QSO PARTY.** Have you been operating in the ARRL Centennial QSO Party yet? To celebrate it's 100th anniversary the ARRL will be putting W1AW on the air this year from all 50 states and, unlike a lot of special events these days, they are doing a lot of CW. That means that you have the chance to earn QRP/CW WAS in just one year with just one call sign - W1AW/#. So far 12 states have been put on the air but if you have missed any of them don't worry because every state will be repeated later in the year. I know of several NAQCC members who are giving it a try. So far pile-ups have been significant but very bustable. You can find complete information about the Centennial on the ARRL web site.
- ◆ **VE3FUJ WINS 2013 PARTICIPATION AWARD.** Each year for the past 7 years, including this year, FISTS has offered a FREE membership or FREE one-year renewal to their top-notch CW preservation club which is now over 25 years old. They have been a strong supporter of the NAQCC ever since our founding back in 2004 and we've never had any difficulties between the two clubs. The NAQCC appreciates that very much and also appreciates the offer of the FREE membership. Membership in FISTS costs \$15.00 per year (which allows them to do much more than other clubs that depend on donations to stay solvent) so that's a considerable savings to the winner.

| IN THIS ISSUE:                |    |
|-------------------------------|----|
| <i>Key Clicks</i>             | 1  |
| <i>NAQCC 10th Anniversary</i> | 3  |
| <i>NAQCC Sprints</i>          | 4  |
| <i>NAQCC Challenges</i>       | 6  |
| <i>NAQCC Awards</i>           | 7  |
| <i>Member Spotlight</i>       | 9  |
| <i>Ham Quips</i>              | 11 |
| <i>Chapter News</i>           | 12 |
| <i>QRS Nets</i>               | 18 |
| <i>CW Assistance Project</i>  | 20 |
| <i>Member Submissions</i>     | 21 |
| <i>Club Information</i>       | 24 |

The FISTS prize is awarded as follows. All those who participate in every NAQCC sprint and NAQCC challenge during a calendar year and thus earn 36 participation points are entered into a drawing for the prize. A member can now only win once, then becomes ineligible in future years.

(Continued on page 2)

Here are the previous winners:

2012 - W9UX 2011 - K1IEE 2010 - N8XMS 2009 - W2JEK 2008 - W2JEK 2007 - VE3HUR

This year the following members all earned 36 participation points:

K1IEE W2JEK K3WWP N8XMS VE3FUJ

The following are ineligible for the prize this year for the reasons given:

K1IEE W2JEK N8XMS - Previous winners

K3WWP - Withdrew because of being the FISTS Keynote QRP columnist

So that leaves Brion VE3FUJ as the 2013 winner. Congratulations!

- ◆ **NM4T ARTICLE PUBLISHED IN QQ.** NAQCC member Craig, NM4T, had a nice article published in the Winter 2014 *QRP Quarterly* (QRP ARCI) about his December Dxpedition to St. Lucia as part of the “Buddies-in-the-Caribbean” group (BIC). Two other members of the BIC team, AA4W and W4QO, are also NAQCC members. More than 12,000 (almost 1/3) of their QSOs were QRP.
- ◆ **SEEING DOUBLE?** This item falls under the category of fairly useless trivia. Our most recent NAQCC member is Paul Huff, AE7UG, #7096. Yes, that’s my name too! A check on QRZ.com actually shows that there is a third ham named Paul Huff out in CA. As an off-handed comment in an email that I sent to John, K3WWP, I wondered what the odds would be in a club our size for two people to have the same name. Well most of you know that John is a record keeping wizard and in no time at all he actually sent me an answer! It turns out that it’s not all that uncommon - there are 78 pairs of members who share the same name. But there’s more. There are seven names that are shared by three people (21 total members), and there is one incredibly popular name - Robert Scott - that is shared by 4 different members! So I guess that I’m not so special after all. At least I’m fairly certain that I am the only N8XMS in the world. BTW, welcome to the NAQCC ~~Paul~~ ... err ... AE7UG!
- ◆ **THANK YOU FOR THE DONATIONS!** A big “THANK YOU” goes out to KM7Q, AI4SV, KE9DR, N8IUP, NU7T, KD2MX and N8ZYA for their recent contributions to the NAQCC treasury. Your generosity is greatly appreciated.



## NAQCC 10TH ANNIVERSARY SNEAK PREVIEW

Plans are already underway for the celebration of our tenth anniversary from October 13-19. Here is a sneak preview of what's coming, along with the details of an important rule change for the prize drawing this year.

Once again special event N#A stations will be operating from each of the ten US callsign districts, giving everyone the chance to earn special QSL cards and certificates. We need volunteers to operate the special calls and the more the merrier. No special equipment is needed and it doesn't require anything more than your normal operating time. All you have to do is sign up to be an N#A operator, put the call on the air (using QRP and CW of course), and submit your log. Coordinating your operating times with other N#A stations in your call district is easy to do in near real-time using our online scheduler. (Detailed instructions will be sent to all N#A operators in September.) Take a look at the soapbox comments from our 9<sup>th</sup> anniversary N#A operators at the end of the *N#A Wrapup* article in the November 2013 newsletter ([http://naqcc.info/newsletter\\_185.pdf](http://naqcc.info/newsletter_185.pdf)) to get a feel for how much fun it is.



If you would like to be an N#A operator please send me (N8XMS) an email with you name, call, and call district. We understand that you might not be sure of your schedule this far out, and that's OK. You can back out if you need to. If you are interested in operating N#A during the sprint that week (on the 14<sup>th</sup> – not UTC) indicate that in your email as well. Sprint time slots will be assigned to the first person to ask for it from each district. You can find my email address on the last page of the newsletter.

During discussions with club leaders over the past couple of months we have been asking ourselves how we could increase participation in our club activities, especially in the underutilized monthly challenges. We have come up with a new rule for the Anniversary Sprint prize drawing that we hope will do the trick and that will be fair for all of our NAQCC members. In the past, the only requirement for winning a prize was to be an NAQCC member and to participate in the October Anniversary sprint. This year, in addition to that requirement, prize winner eligibility will also include a regular participation requirement.

Here are the details. Between now and the October celebration there are 8 regular sprints and 7 challenges scheduled. (Since we are already into February we are not counting this month's challenge but it's certainly not too late to do it.) To be eligible to win a prize in the October sprint a member must participate in at least 4 of these sprints and 3 of the challenges. Then, if you participate in the October Anniversary Sprint, you will automatically be in the running to win one of several great prizes.

An important thing to remember here is that these participation requirements are not about winning a sprint or completing a challenge. It's just basic participation. For a sprint, that's making at least 1 QSO and submitting a log. For something like an alphabet challenge it usually means completing just one of the words in the list. These are certainly not huge requirements and anyone who gives it a try should easily be able to meet them.

So have fun getting on the air in our sprints and challenges and we look forward to seeing all of you in our anniversary celebration this October.



## NAQCC SPRINTS

**CURRENT MONTH SPRINT:** Our next sprint will be on February 12, 0130-0330 UTC. That’s Tuesday evening on the 11th in North America.

Please remember to strive for that perfectly formatted “SILVER LOG” submission. It really helps our log processing. There will be a prize at the end of the year for the most SILVER logs.

Complete sprint rules and information on log submission can be found at <http://naqcc.info/contests.html>.

**LAST MONTH SPRINT RESULTS:** Our 111th sprint in January slipped a little bit under our usual 100-log threshold with 97 submissions. With poor conditions on the higher bands, most of the action was found on 80-meters. Despite the tough conditions the soapbox was filled with “great fun” kinds of comments. 83 of the 97 submitted logs were perfectly formatted “silver.”

Congratulations to the winners and a big “THANK YOU” to all of the participants who submitted a log. Every time that you do so you are casting your vote for CW and QRP!

We would especially like to welcome our first-time loggers: W5SOC, N3TS, WB9LUR, W8CDC, N5WVR. We trust that you had a fun time and hope that you will continue to participate and submit your results.

Complete results along with soapbox comments can be seen at <http://naqcc.info/sprint201401.html> . Result summaries are shown in the tables on the following page.

We also had our annual 160-meter sprint this past month. 48 logs were submitted by members which is the third highest in the history of this special sprint. As K3WWP pointed out, *“I don't think any of our sprints has ever shown how important a big high antenna is for making a good score when conditions are not the greatest. Just scroll down and look at the antenna of everyone who made 10 QSOs or more and compare them to the rest of us who made fewer than 10.”* Complete results and soapbox comments can be seen at [http://naqcc.info/sprint201401\\_160.html](http://naqcc.info/sprint201401_160.html) .

**SPRINT HONOR ROLL:** We honor the following members for their outstanding participation over the years in our sprints. Exact counts can be seen at [http://naqcc.info/sprint\\_dates.html](http://naqcc.info/sprint_dates.html) .

| Number of Sprints | Members  |
|-------------------|--|
| 50+               | AA9L VE3FUJ KD0V KB3AAG WY3H N4FI K3RLL NF8M KU4A K4JPN N8XMS NU7T |
| 75+               | WB8LZG K4BAI KD2MX K4NVJ W2SH W9CC W2JEK                           |
| 100+              | KA2KGP K3WWP   |
| 125+              |  |

| <b>CERTIFICATES</b>                      |                       |                       |                       |
|--|-----------------------|-----------------------|-----------------------|
| <b>SWA CATEGORY</b>                      |                       |                       |                       |
| <b>Division</b>                          | <b>1<sup>st</sup></b> | <b>2<sup>nd</sup></b> | <b>3<sup>rd</sup></b> |
| <b>W1</b>                                | W1FSR                 |                       |                       |
| <b>W2</b>                                | W2SH                  | WA2NYY                | KA2KGP                |
| <b>W3</b>                                | K3WWP                 |                       |                       |
| <b>W4</b>                                | WG8Y                  | K4JPN                 |                       |
| <b>W5</b>                                | W5IQS                 |                       |                       |
| <b>W6</b>                                | KA6AIL                |                       |                       |
| <b>W7</b>                                | KF7WNS                |                       |                       |
| <b>W8</b>                                | NX8Y                  | AC8LJ                 |                       |
| <b>W9</b>                                | NN9K                  |                       |                       |
| <b>W0</b>                                | KD0V                  |                       |                       |
| <b>VE</b>                                | VE2TH                 |                       |                       |
| <b>DX</b>                                |                       |                       |                       |
| <b>KEY CATEGORIES</b>                    |                       |                       |                       |
| <b>Straight Key (x2)</b>                 | WG8Y                  |                       |                       |
| <b>Bug (x1.5)</b>                        | AA9L                  |                       |                       |
| <b>Keyer (x1)</b>                        | KB3AAG                |                       |                       |
| <b>OTHER CATEGORIES</b>                  |                       |                       |                       |
| <b>Gain</b>                              |                       |                       |                       |
| <b>First-Time Logger<br/>High Scorer</b> | W5SOC                 |                       |                       |
| <b>Prize Drawing</b>                     | KK4LLD                |                       |                       |

|                           | <b>Current Month</b> | <b>Previous Month</b> | <b>All-Time Record</b> | <b>Record Date</b> |
|---------------------------|----------------------|-----------------------|------------------------|--------------------|
| <b>Logs</b>               | 97                   | 109                   | 194                    | 2/13               |
| <b>Participants</b>       | 145                  | 164                   | 269                    | 2/13               |
| <b>Total QSOs</b>         | 1148                 | 1549                  | 2804                   | 2/13               |
| <b>Hour 1 QSOs</b>        | 641                  | 866                   | 1468                   | 2/13               |
| <b>Hour 2 QSOs</b>        | 507                  | 684                   | 1334                   | 2/13               |
| <b>20m QSOs</b>           | 2                    | 37                    | 1232                   | 8/13               |
| <b>40m QSOs</b>           | 367                  | 639                   | 1534                   | 4/12               |
| <b>80m QSOs</b>           | 779                  | 874                   | 1417                   | 2/13               |
| <b>Avg QSOs / Station</b> | 11.8                 | 14.2                  | 19.3                   | 9/11               |



## NAQCC CHALLENGES

**CURRENT MONTH CHALLENGE:** The challenge for February is an alphabet challenge that looks forward to the end of winter with the Ground Hog Day predictions that come from animals around the country like Punxsutawney Phil and Staten Island Chuck. Even though we are already into the month it's not too late to tackle this challenge. The list of celebrity ground hogs, along with the rules, is at <http://naqcc.info/challenges201402.html> .

**NEXT MONTH CHALLENGE:** NAQCC is having an on the air block party in March and you are invited! Stop by and chat with your fellow members to earn a participation point. This is not a contest and rag chews are definitely encouraged. No points, sections or multipliers, just QSOs with fellow QRPers. Block party QSOs are good toward all NAQCC awards. Helpful hint : Wouldn't a club spotter be useful to find party goers? We have that. See the main page of the web site for the spotter links. Just 10 BP QSOs will earn you a certificate so BYOK (Bring Your Own Key) and enjoy the party! Complete rules for the Block Party are at <http://naqcc.info/challenges201403.html> .

Complete information about our challenges including a helpful tutorial on how to organize your work for an alphabet challenge is available at <http://naqcc.info/challenges.html> .

**LAST MONTH CHALLENGE:** As of this writing the deadline for submission for the January challenge has not yet arrived. So far 14 people have submitted logs and 12 of them completed the challenge. Let me quote the soapbox comment of SM5MEK, *"This is my first challenge at NAQCC, have done two at NAQCC-EU with good results. This gives me a goal to do more cw grp qso,s. And also, it,s fun. I've had luck with some dx stns. I really like to operate cw grp and qrs. No stress to receive."* I couldn't have said it better myself.

Complete results and soapbox comments can be seen at <http://naqcc.info/challenges201401.html> .



## NAQCC AWARDS

We have an extensive list of awards that you can earn. Complete details can be found at <http://naqcc.info/awards.html>. Here are the certificates and endorsements earned this past month:

### 1000 MPW AWARD

|                  |          |   |        |          |                            |
|------------------|----------|---|--------|----------|----------------------------|
| 0341 - WA9ADT    | W7LXN    | - | 1,405  | 01/06/14 | Attic G5RV                 |
| 0342 - KM7Q      | JA7COI   | - | 2,449  | 01/06/14 | Inverted V@20'             |
| 0343 - N8EN      | K7RL     | - | 1,872  | 01/06/14 | Fan dipole (160/80/40)@30' |
| 0344 - VE3GNS    | K4LCD    | - | 1,242  | 01/06/14 | wire@29'                   |
| 0345 - AJ4D      | R1ANN    | - | 8,627  | 01/06/14 | 533'loop@45'               |
| 0346 - KK1BOB    | JH7VHZ   | - | 1,348  | 01/06/14 | end-fed@50'                |
| 0347 - K0FNR     | ZM90DX   | - | 14,600 | 01/06/14 | vertical dipole            |
| 0348 - N7RCS     | ZM90DX   | - | 1,445  | 01/06/14 | fixed wire loop            |
| 0349 - N7RCS     | CE9DNP   | - | 1,249  | 01/06/14 | fixed wire loop            |
| 0350 - N7RCS     | JA3YBK   | - | 1,016  | 01/06/14 | fixed wire loop            |
| 0351 - N7RCS     | LT1F     | - | 1,306  | 01/06/14 | fixed wire loop            |
| 0352 - N7RCS     | KH2L     | - | 1,186  | 01/06/14 | fixed wire loop            |
| 0353 - N7RCS     | ZM1A     | - | 1,476  | 01/06/14 | fixed wire loop            |
| 0354 - N7RCS     | CT3KN    | - | 1,008  | 01/06/14 | fixed wire loop            |
| 0355 - N7RCS     | EW1BA    | - | 1,032  | 01/06/14 | fixed wire loop            |
| 0356 - N7RCS     | S50R     | - | 1,076  | 01/06/14 | fixed wire loop            |
| 0357 - N7RCS     | 9A5Y     | - | 1,095  | 01/06/14 | fixed wire loop            |
| 0358 - AB9YC     | KH2/N2NL | - | 1,468  | 01/06/14 | ground-mounted vertical    |
| 0359 - KD6SX     | F6ARC    | - | 1,117  | 01/06/14 | dipole                     |
| 0360 - WB9G      | LU7HF    | - | 1,757  | 01/06/14 | Inverted L@40'             |
| 0361 - AB9YC     | UX6IZ    | - | 1,081  | 01/06/14 | ground-mounted vertical    |
| 0362 - AA7CU     | JA5FBZ   | - | 1,218  | 01/06/14 | mobile 1' whip             |
| 0363 - KB8M      | PR1T     | - | 1,042  | 01/07/14 | Windom@30'                 |
| 0364 - K9WKW     | ZS1OLI   | - | 1,743  | 01/07/14 | Fan dipole (160/80/40)     |
| 0365 - KE4PT     | UA3EKG   | - | 1,154  | 01/07/14 | Inverted-L                 |
| 0366 - KE4PT     | T32C     | - | 2,143  | 01/07/14 | Inverted-L                 |
| 0367 - N7GOA     | JA1NUT   | - | 1,059  | 01/09/14 | Center-fed Zepp            |
| 0368 - VE3CBK    | VK3EGN   | - | 2,067  | 01/09/14 | 20m dipole@20'             |
| 0369 - UR5FA/mm  | KH7Y     | - | 8,816  | 01/10/14 | 20.5m Windom               |
| 0370 - SV5/DK5LP | DU1KA    | - | 1,144  | 01/17/14 | dipole                     |
| 0371 - WD4E      | VK3YE    | - | 1,987  | 01/20/14 | 40m Delta loop             |
| 0372 - N2EI      | ZD8W     | - | 1,010  | 01/25/14 | 15m dipole@25'             |
| 0373 - PA0XAW    | IV3RAZ   | - | 1,476  | 01/25/14 | G7FEK@10m                  |
| 0374 - PA0XAW    | SM6NT    | - | 1,179  | 01/25/14 | G7FEK@10m                  |
| 0375 - PA0XAW    | G5NLH    | - | 1,055  | 01/25/14 | G7FEK@10m                  |
| 0376 - PA0XAW    | F6CRP    | - | 1,327  | 01/25/14 | G7FEK@10m                  |
| 0377 - PA0XAW    | EI1IL    | - | 1,229  | 01/25/14 | G7FEK@10m                  |
| 0378 - AB9YC     | ZS4TX    | - | 1746   | 01/26/14 | Ground mounted vertical    |

(Continued on page 8)

**2013 PARTICIPATION AWARD**

|    | Call   | Points (36 maximum) | Date     |
|----|--------|---------------------|----------|
| W1 | K1IEE  | 36                  | 01/10/14 |
| W2 | W2JEK  | 36                  | 01/10/14 |
| W3 | K3WWP  | 36                  | 01/10/14 |
| W4 | KU4A   | 16                  | 01/10/14 |
| W5 | W5IQS  | 12                  | 01/10/14 |
| W6 | K6MGO  | 11                  | 01/10/14 |
| W7 | NU7T   | 16                  | 01/10/14 |
| W8 | N8XMS  | 36                  | 01/10/14 |
| W9 | AB9YC  | 21                  | 01/10/14 |
| W0 | KD0V   | 16                  | 01/10/14 |
| VE | VE3FUJ | 36                  | 01/10/14 |
| DX | CO8CML | 4                   | 01/10/14 |

**DXCC AWARD (CATEGORY C - QRPp - 25 COUNTRIES)**

0002 - MW0RSS 01/27/14





## MEMBER SPOTLIGHT

Each month one of our members is randomly selected and asked to share their ham radio biography with all of us. Questions or comments should go to Paul, KD2MX, at [kd2mx@arrl.net](mailto:kd2mx@arrl.net).

**DISCLAIMER:** Any views expressed in this section are those of the submitting member and may or may not be those of the NAQCC or its officers.

### CHAS POWELL, NK8O, #5873



I was a short wave listener from a young age. I built the requisite crystal sets, and later had a Lafayette KT-340 SW receiver that my dad and I built over Christmas in about 1965. I flirted with commercial radio in college, but I didn't get fully into Amateur Radio until age 30. I am a long time license holder with a relatively short time on the air. My first license was issued to me in Canada, VE3OCF, under the guidance of a "Master of Morse", Eric Stabler (SK). At the time, the basic license in Canada required 10 WPM. Eric neglected to tell us that he was sending at about 20 WPM and we didn't know any better. When I took my first exam, I thought they had played back the tape at the wrong speed! Some of you may remember the old Wollensak tape recorders, with playback at 3 3/4 or 7 1/2 inches per second. I'm sure the younger guys won't. I managed to take my US Amateur Extra exam at the last FCC administered session at Buffalo, New York. I was given the call sign NK8O and I have kept this despite many moves across the country.

I operated QRO when I was in Canada, but after moving back to the US, the radio hobby went on the shelf for about 25 years. My interest in QRP evolved from looking for an inexpensive way to get back into the hobby, about 2 1/2 years ago. With a Ten-Tec R4030 in hand, I went about getting my fist back in order. With a makeshift dipole at 8' off the ground, one of my first contacts was with Nicaragua. I thought this was pretty cool, but more important, I was hooked once again. I had a Kenwood TS-440SAT available, but when I finally dusted it off my immediate reaction was "too easy". I think I tuned up on 17 meters and worked Senegal on the first try. I was cured of 100 watt rigs.

My favorite operating mode is casual. I'm not a big fan of contests, but I occasionally participate. The NAQCC challenges and the SKCC sprints are great because they are brief, and the goal is participation. The over-achievers can rack up the points, but the rest of us can just have a little fun and not worry about it too much. I do like impromptu operations in the park, from hotels, and while traveling. I had the good fortune of operating from Tanzania in 2012. Even with low power and a long wire antenna, the DX crowd was ready to pounce. I also love to rag chew.

The current equipment is based around a KX3. I still use simple wire antennae. I have a variety of straight

*(Continued on page 10)*

keys, paddles, and a Vibroplex bug vintage 1960s, but nothing more exotic than that. I use a Birdie mini key for SK operations while portable, and currently I'm using a Vibroplex "Know Code" SK at home with a variety of paddles. I'm hopeless with a bug. The state of amateur radio gear after 25 years is nothing short of astonishing after many years away.

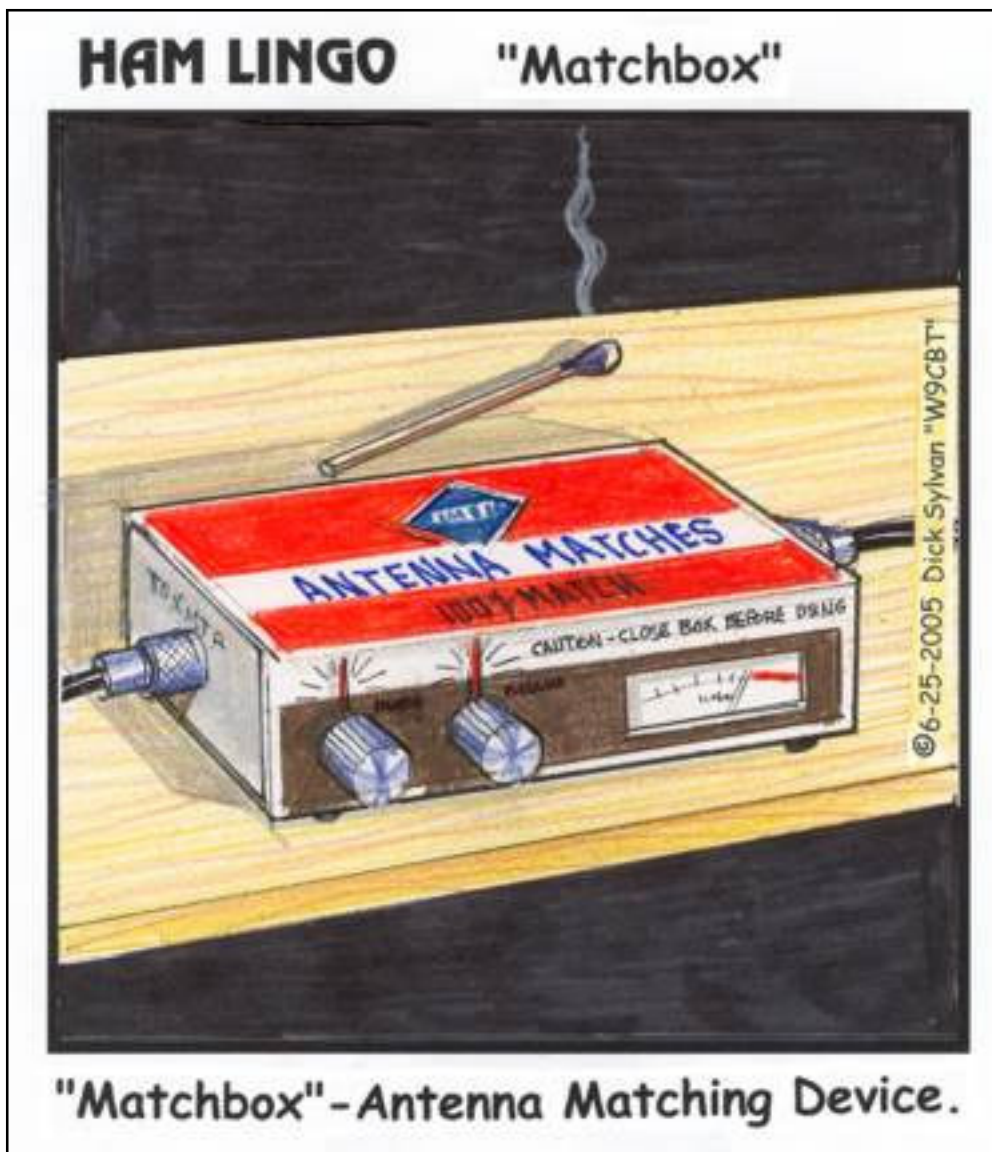
My other hobbies are really in the category of busman's holiday. As a physician and pediatrician, I greatly enjoy mission medicine. I currently am retired from office medicine and I now devote my time mainly to hospital work. My favorite work site is in the NICU, but I am doing some traveling and relief work as well. My children are grown, and we managed to get that last of them through undergraduate training. My wife also is a physician, but there is little chance of her taking any interest in Amateur Radio.



## HAM QUIPS



Dick Sylvan, W9CBT, NAQCC #2062, has been a QRP/CW operator for a long time. He is also a very talented cartoon artist. Dick's cartoons appear monthly in the K9YA Telegraph, a free ham radio eZine published by the Robert F. Heytow Memorial Radio Club (<http://www.k9ya.org/>). We are very pleased and honored to be allowed to reprint his cartoons here. Dick has also authored the book "HI HI — A Collection of Ham Radio Cartoons" which is available at <http://www.k9ya.org/w9cbt/>.



"Matchbox"- Antenna Matching Device.

## NAQCC CHAPTER NEWS

We currently have five chapters—Europe, Texas, Western Pennsylvania, West Virginia, and Florida—but we would be very happy to expand on that list. Chapters are more or less independent local gatherings organized by NAQCC members in a geographical area and subject to a list of guidelines from the NAQCC. They provide opportunities to have fun and to promote our parallel passions of QRP and CW. If you would be interested in starting a chapter in your area email [Paul142857@gmail.com](mailto:Paul142857@gmail.com) and information will be sent to you.

If your chapter is planning a portable operation activity and would like to have it promoted, send an email with the subject “NAQCC portable operation”, and with the exact wording of the announcement to [kd2mx@arrl.net](mailto:kd2mx@arrl.net). Please be sure to submit a summary write-up of the activity, including pictures, to [Paul142857@gmail.com](mailto:Paul142857@gmail.com) for posting to this section of the newsletter.

### NAQCC EUROPEAN CHAPTER:



Items in this section are from European Chapter President Matt, MW0MIE unless otherwise credited. Questions or comments should go to [matt@naqcc-eu.org](mailto:matt@naqcc-eu.org). The European Chapter website is at <http://www.naqcc-eu.org/>.

The European Chapter has its own monthly sprints and challenges to compensate for the Atlantic Ocean. However all are welcome to participate, not just EU members, and we regularly receive challenge and sprint logs with trans-Atlantic QSOs. Please see the chapter web page for dates and details.

No additional report available.

=====

**NAQCC WESTERN PENNSYLVANIA CHAPTER:**

Items in this section are from John, K3WWP, unless otherwise credited. Questions or comments should go to [naqcc33@windstream.net](mailto:naqcc33@windstream.net).

Not a lot to report in the dead of the depressing season of winter. Mike KC2EGL and I (K3WWP) did get together on January 20 for our monthly meeting. No parkpedition, nor even any thoughts of one in this weather. We envy Don K3RLL down there in FL for the winter, and do look forward to the good weather here when we can again get out in the park to operate. Mike and I chased some DX and the W1AW/# stations while he was here. A couple stations we worked come to mind - OF40R, E77DX, and KH7Y. There were a couple others also that escape me now. We also engaged in another favorite activity - eating - with a good meal at Wendy's. Then we watched an episode of the British comedy 'Doctor In The House' before Mike had to head home to get up early for work the next day.

Before he left we took this picture of the two of us with our brand new NAQCC WPA Chapter hats we ordered from Astrid's Embroidery. (See the main NAQCC web site page for a link if you'd like to order some NAQCC hats, jackets, etc.)

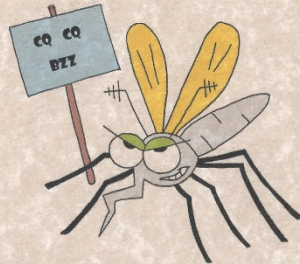


Mike and John received a nice certificate for their top finish in Pennsylvania for the NJQRP Skeeter Hunt last summer as they did a multi-op setup with the NAQCC club call of N3AQC from the Kittanning Community Park. It was also the top finish overall from a Multi-Transmitter Multi-OP station as shown on the certificate here prepared by Larry W2LJ - NAQCC member # 0035.

*(Continued on page 14)*



# 2013 NJQRP Skeeter Hunt



The NJQRP Club  
 is proud to present this certificate to the  
**North American QRP CW Club, N3AQC**  
 for earning Top Pennsylvania Finish  
 and Top Finish by a Multi -Transmitter, Multi-OP Station  
 in the 2013 NJQRP Skeeter Hunt  
 with a score of 10,160 points

Presented on 9/12/2013 by Larry Makoski W2LJ, Contest Manager

Also Tom WY3H and I made some preliminary plans for setting up at the Butler Hamfest in June and also for our second annual NAQCC FD operation later that month.

=====

## NAQCC WEST VIRGINIA CHAPTER:



Items in this section are from John, N8ZYA, unless otherwise credited. Questions or comments should go to John at [jspiker58@gmail.com](mailto:jspiker58@gmail.com). The chapter's web site is at <https://plus.google.com/communities/102627005227155262259?hl=en&partnerid=gplp0>.



The winter months put another damper on outside activities for the West Virginia Chapter. The brutal cold has kept everyone indoors and radio activity to a bare minimum.

We still enjoy our breakfast meetings on the first Wednesday of every month. It's always a joy to see each other and talk about changes on the bands, new contacts, radio gear, or just checking with each other during the holiday season.

Speaking of the holiday season; Eric (**AC8LJ**) invited my wife and I for a Christmas gathering at his home and I was pleasantly surprised to find there were four hams (**N8ZYA-AC8LJ-KD8SGV-AA8SH**) in the group. We all spent a few moments in his radio shack tuning around and listening to the filtering on his TenTec rig. I envy it very much.

Around the first of this month, I tagged along with Eric on a trip to Ravenswood WV to see a radio shack which has the entire **Elecraft K Line**. The trip was about an hours drive from Charleston.

Art (**W8PBO**) and his wife (**N8GLB**) were gracious hosts to both of us. The K3 K line is an amazing piece of equipment! I'm extremely impressed with it! Art also has a nice key collection, and before leaving for the return trip to Charleston, Eric had a Spanish LTA sidwinder key and I had a small Vibroplex Code Mite straight key.



My little Code Mite key is # 490 of less than a thousand that were originally produced. Most people would have kept it as a collectors piece but I'm using it daily and enjoying some very nice long QSO's.

On January 8<sup>th</sup> of this month, there was a terrible "coal mining cleaning compound" (7,000 gallons) leaked into the water intake of **300,000** people in the Charleston area. This disaster shut down "all potable water" for nine different counties. We had to leave home for a day and drive to a nearby city to wash laundry and take a shower. We're still not "drinking" the water, although the chemical was supposedly flushed out of nearly **600** miles of pipeline. Communications could have been critical during this situation but hams were not called into action on this issue.

We're looking at a some "neat" transmitting spots this spring. More about that later. For now, we're trying to stay warm and hoping the legislature will "fix" this water situation so that it never happens again.

=====

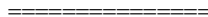


**NAQCC TEXAS CHAPTER:**

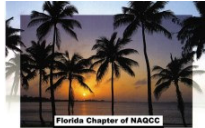


Items in this section are from TX Chapter Director Ron, K5DUZ, unless otherwise credited. Questions or comments should go to [webmaster7388@naqcctx.com](mailto:webmaster7388@naqcctx.com). The TX Chapter website is at <http://www.naqcctx.com/>.

No report available.



**NAQCC FLORIDA CHAPTER:**



Items in this section are from the Florida Chapter unless otherwise credited. Questions or comments should go to [naqccfl@yahoo.com](mailto:naqccfl@yahoo.com).

No report available.



# NAQCC QRS NETS

Additional information about our slow-speed CW nets can be found at [http://naqcc.info/cw\\_nets.html](http://naqcc.info/cw_nets.html) .  
 Send any questions to Net Manager Chuck, KB1ZMX at [cfytech24x7@gmail.com](mailto:cfytech24x7@gmail.com).

| <b>NAQCC QRS NET SCHEDULE</b>                    |                             |                      |             |                            |
|--|-----------------------------|----------------------|-------------|----------------------------|
| Net  | Local Time                  | UTC                  | Freq        | Primary NCS                |
| Main Net   | Sunday<br>8 PM Eastern      | Monday<br>0100 Z     | 7060 KHz    | Ron, WB1HGA<br>(in MA)     |
| East Texas                                       | Monday<br>7 PM Central      | Tuesday<br>0100 Z    | 3561 KHz    | Allen, KA5TJS<br>(in TX)   |
| Midwest Net <i>(Suspended until spring 2014)</i> | Monday<br>9 PM Central      | Tuesday<br>0300 Z    | 7123.5 KHz  | Steve, WB0QQT<br>(in NE)   |
| Rocky Mtn Regional / Continental                 | Tues/Thurs<br>4 PM Mountain | Tues/Thurs<br>2300 Z | 14062.5 KHz | Dale, WC7S<br>(in WY)      |
| East Coast                                       | Thursday<br>8:30 PM Eastern | Friday<br>0130 Z     | 3560 KHz    | Robert, KG4KGL<br>(in SC)  |
| Pacific Northwest                                | Thursday<br>7 PM Pacific    | Friday<br>0300 Z     | 3574 KHz    | Stewart, KE7LKW<br>(in WA) |
| Pacific Northwest <i>(Suspended until ???)</i>   | Monday<br>8 PM Pacific      | Tuesday<br>0400 Z    | 7123.5 KHz  | JB, KR5RR<br>(in CA)       |

Reported conditions remained challenging for this month. The NCS comments say it all, I think. No QNI means the NCS called the net but got no check-ins. No report means no operational report was submitted by press time. Thanks to all who soldiered on despite poor conditions!

72, chuck KB1ZMX

=====

NAQCC Main QRS Net (NQN) - Sunday, 8:00 PM Eastern Time, 7.060 Mhz  
 01-05-2014 (6) NCS WB1HGA AE4DT KA9DVX W0CC K9EYT AF4LB  
 01-12-2014 () NCS WB1HGA No report  
 01-19-2014 () NCS WB1HGA No report  
 01-26-2014 () NCS WB1HGA No report

NAQCC East Texas QRS Net (ETN) - Monday, 7:00 PM Central Time, 3.061Mhz  
 01-06-2014 (2) NCS K5BRY KE5YGA  
 Got a problem at 04:45 at work and did not get home until 07:45. Joe sent me an email and said he had to move down due to QRM on 3.561kc. Seems to be a recurring problem.  
 Thanks very much to Joe and Andy for the backup for the last two weeks.  
 01-13-2014 (6) NCS KA5TJS KE5YGA N5DRG KE5YUM KA0ENU KG0YR  
 QRN was really bad but the signals were very good. Great group after I missed 2 week in a row. Welcome to Joe from Nashville, TN.

01-20-2014 (6) NCS KA5TJS KE5YUM K5BRY KE9DR KE5YGA N5DRG

We also had KG0YR and AE5WW but they were gone when I called them. The QSB was bad and we had a lot of SSB QRM. It was a ruff night and thanks to those who hung in there with me.

01-27-2014 (5) NCS KA5TJS KE5YUM K5BRY KE5YGA KG0YR

The QSB was very fast and deep. There one word, gone the next. I went QRO after the first QSO because Terry was having trouble hearing me. We also had some SSB QRM. I could filter it out but the others were reporting it. I was on the Icom so had more filters.

NAQCC Midwest QRS Net (MWN) - Monday, 9:00 PM Central Time, 7.123.5 Mhz

Net operations suspended until conditions improve.

01-06-2014 (0) NCS WB0QQT No QNI

Just called the MWN net for 15 minutes and no QNI's again tonight. 40 meters has gone way long for the winter I guess so I am suspending the net until further notice. Hopefully conditions will improve come Spring !

NAQCC Rocky Mtn Regional/Continental QRS Net (RMR) - Tuesday/Thursday 5:00 PM Mountain Time, 14.062.5 Mhz

01-02-2014 (6) NCS WC7S KE6OIO K6MGO AA7CU K0DTJ VE3MPQ

01-07-2014 (9) NCS WC7S N6MY KE6OIO AA7CU KF7WNS AE7CG NK6A K6MGO K4BAI

01-09-2014 (4) NCS WC7S KF7WNS N6DL AA7CU

01-14-2014 (3) NCS WC7S KE6OIO K7MGO

01-16-2014 (4) NCS WC7S KE6OIO KU8L N6NY

01-21-2014 (6) NCS WC7S N6MY KE6OIO K6MGO K0DTJ KF7WNS

01-23-2014 (7) NCS WC7S AA7CU K6MY KE6OIO K0DTJ NW6R K6MGO

01-28-2014 (3) NCS WC7S KE6OIO AA7CU

01-30-2014 () NCS No Report

We have enjoyed some great nets, filled with interesting information and conversation.

Many of the nets this time were run with NCS at QRP. It is a lot of fun, and interesting to share temps and current events in our situations. What are you doing in your shack?

NAQCC East Coast QRS Net (ECN) - Thursday, 8:30 PM Eastern Time, 3.560 Mhz +/-

01-02-2014 (0) NCS KG4KGL No QNI

01-09-2014 (0) NCS KG4KGL No report

01-16-2014 (0) NCS KG4KGL No QNI

01-23-2014 (0) NCS KG4KGL No report

01-30-2014 (0) NCS KG4KGL No report

NAQCC Pacific NorthWest QRS 80 Meter Net (PNW80) - Thursday, 7:00 PM, Pacific Time, 3.574 MHz

01-02-2014 (5) NCS KE7LKW WA6BKD AD7BP K7ZNP WB4SPB

01-09-2014 (5) NCS KE7LKW N6KIX AD7BP K7ZNP WB4SPB

01-09-2014 (5) NCS KE7LKW N6KIX AD7BP K7ZNP WB4SPB

01-09-2014 (4) NCS KE7LKW AD7BP N6KIX K7ZNP

01-09-2014 (4) NCS KE7LKW AD7BP N6KIX WB4SPB

NAQCC Pacific NorthWest QRS 40 Meter Net (PNW40) - Monday, 8:00 PM, Pacific Time, 7.123.5 MHz

No reports. Net operations suspended until conditions improve.



## NAQCC CW ASSISTANCE PROJECT



Items in this section are from CW Assistance Project Coordinator Brion, VE3FUJ, unless otherwise credited. If you are interested in helping out or need some help yourself please contact VE3FUJ at [ve3fuj@wrightman.ca](mailto:ve3fuj@wrightman.ca). Additional help is also available on our website at <http://naqcc.info/cw.html>.

In the past the American license structure (I've been told) allowed people to be licensed with little or no CW skills and of course now there is no code requirement for any class of license. At the same time there are many indications that the interest in Morse code is actually growing. All of this has created a situation where many hams, newcomers and old timers alike, want to learn Morse Code but perhaps don't even know where to start. One excellent place to begin would be the *CW Assistance* pages on our NAQCC web site at <http://naqcc.info/cw.html>. You can find a lot of helpful information there along with links to other useful web sites.

It can't be emphasized strongly enough and often enough that Morse code is an exacting endeavor. To be easily read and understood, the length of characters as well as the spacing between characters and words must be near perfect. It's not as difficult as it sounds, provided you go about it the right way. There is a neat suggestion in *CW Assistance* on using a metronome to help with this. (Look under *Learning Aids*.)

Like the punch line from the old joke about a musician telling a tourist how to get to Carnegie Hall - "practice, practice, practice" - the same regimented practice will get you to CW proficiency as well. (Actually there are a lot of similarities between music and Morse Code. In both skills that accurate timing that I talked about is crucial.)

As you practice always remember that speed is not a significant factor in Morse Code, ACCURACY is! Good Code is acceptable at speeds of 2 wpm and up. Practice will improve your speed, confidence, and proficiency. If you have a few "teething problems" enlist the help of one of the "Code Buddies" that are listed on the *CW Assistance* pages.

One additional word of advice. If you can operate a straight key, stick with it till you learn the code and gain proficiency and confidence and know what good code is supposed to sound like. Bugs, Keyer's and Paddles won't disappear, and when you are ready for them, they'll be there waiting for you to make a purchase. Also there is a cost factor in the purchase of a Key, Bug or paddle. An industrious Ham could easily make a straight key or a set of paddles of high enough quality that would give many years of service. It takes but a few pieces of metal, wood or pieces of circuit board and some determination. A bug, even a simple one is a complicated piece of machinery and there is more to it than meets the eye.

72 Brion -30-



## MEMBER SUBMISSIONS



This section is a forum for you to tell other members what you've been up to on the ham bands or to submit an article dealing with some aspect of CW and QRP operation or equipment. Just about anything that would be of interest to our members would be welcomed. Send your items to our news editor Paul, KD2MX, at [kd2mx@arrl.net](mailto:kd2mx@arrl.net).

**DISCLAIMER:** Any views expressed in this section are those of the submitting member and may or may not be those of the NAQCC or its officers.

**From George, N7NLN, #6977 --**  
NUE-PSK modem as a training aid for CW.

The NUE-PSK modem is a VHS tape sized self-contained modem for operating PSK31, RTTY and CW without a Personal Computer. It takes input from a keyboard and recently from a set of CW paddles. The web site is very well documented and directed towards the advanced experimenter so I will forego the technical aspects. Digital modes require a ssb capable radio but the modem will now key direct CW and read from most any ham radio. Negative grid keying of that old Drake or Collins will require an adaptor though.

I don't really use the modem to copy code. W1AW or someone sending keyboard generated code works very well. There are a lot of adjustable parameter that I suppose could help with a weak qrp signal, qsb and qrn. The wet wear still handles that through a narrow crystal filter for me. One neat feature is the modem looks at a slice of the band as wide as your widest filter and lets you see a display of the signals in the pass band. You can look for QRO or QRPP.

The most useful feature for me has been CW practice mode. The modem can be completely controlled with a set of CW paddles through a typical 3.5 mm stereo plug. CW practice mode is then selected through a menu system with a couple of button presses and a twist of the knob. All the features work except the transmitter is not keyed. It acts like a contest keyer with macros stored, their call, name and qso serial number incremented. The paddles work for input in the digital modes as well eliminating the need for a cumbersome keyboard.

When you plug in a 3.5 mm mono plug from your straight key, bug or external keyer the modem automatically switches to CW practice mode. This happens because the mono plug short the stereo ring to ground. Now the modem reads and displays your keying. It is amazingly forgiving if you stay at the same speed. One can see how clean your fist is and it is humbling. First the modem establishes the mark time of your "dot" then applies standard spacing. Ring-a-ding morse with a bug sounds unique and musical but the modem looks for standard keying unless you tweak the parameters. It likes an external keyer as the timing is standard and even. Straight key reading works well at the speeds I run, 15 wpm or under. Specs state the modem is capable of reading and operating up to 50 wpm. All but the real telegraph pros will find it helpful. If you use the modems internal keyer for practice things get a little tougher. The mark spacing is set in a menu system. The modem then holds you to that standard. Sending a clean "THE" "THIS" or "THERE" is tough at 20 wpm. Sending long words without extra spaces or running characters together is also challenging. It has been fun and educational for me.

If you decide to order a NUE-PSK modem there is a tough decision. The modem can operate from two internal 9V batteries or an external 12V source if the batteries are removed. That is how I play with it. My

*(Continued on page 22)*

key plugged in and the modem on the desk. If one gives up the internal batteries a daughter board can be added. This adds an internal clock and calander, usb thumb drive slot for recording qsos, updating the modem, and loading macros and settings from a file. It also adds provision for a usb printer and external connection to a laptop. The daughter board can be added later but those features require the accessory board. I update my modem with a serial cable issuing a simple command line request. Macros must be entered with a keyboard or from a file on a thumb drive. They are about the only thing you can't enter with a CW paddle. The internal batteries work for my needs making the modem self-contained. USB connectivity might be important if you don't have a PC with a serial port anymore. There is a pedestrian mobile ham who uses the modem to make CW and PSK31 contacts with two buttons on his pack strap. Try that with a keyboard.

N7NLN

**From Paul, N8XMS, #675 --**

In early January I had a interesting QSO on 40-meters. It was about 0000Z with fairly good band conditions and I called a CQ on 7.03 MHz. A station immediately answered my call. We spent about 12 minutes exchanging all of the standard information (he was 599 and gave me 579), along with some extra items of conversation. He had a good fist and his speed was at the upper limit of my ability so it was a good exercise for me. After we finished our QSO I looked him up on QRZ.com and was surprised to see the following statement on his page: "*QRP Stations: Please do not call unless you have an emergency. Thank you.*" At first I was upset over this display of prejudice and then I started to smile as I imagined his reaction during our QSO when I told him that my rig was an Elecraft K2 at 5 watts! (Does anyone remember Archie Bunker's reaction when Sammy Davis Jr. kissed him?) I never sign my call with /QRP and always enjoy the surprise that is sometimes expressed by QRO operators when I reveal my power to them. (Always after I get my signal report.) But this one was extra sweet! I am happy to report that although this fellow still has "Life is too short for QRP" above a picture of his linear amplifier, he has removed that rather offensive instruction from his QRZ.com page. (No, I didn't say anything to him about it.) Perhaps our QSO, which he seemed to enjoy, had something to do with this? Hey, maybe if enough "undercover" QRPers work him he might even turn off that amp! ;-)

**From John, N8ZYA, #2279 --**

I worked K3Y/KH6 (KH6ZM) in Volcano Hawaii on 40 meters last night (Jan 30). I was using 3 watts CW and an indoor mounted 50 foot piece of random wire for an antenna at 4500+ miles. Of all the different modes of radio, IMHO-- Morse Code will always be the most simple, and yet effective form of communications, ever created by man.

**From Gene, AA8MI, #5703 --**

DXing with simple wire antennas is DXing with a handicap - a much greater handicap than our QRP power outputs, and that antenna handicap is what really separates us from QRO and QRP DXers who have yagis on top of 60 ft.+ towers. As far as I know there is no club for such DXers, but NAQCC would seem to be the most likely "congregating place" for amateurs with such a focus.

As far as I know, no amateur club specifically recognizes or grants awards for confirmed 2-WAY QRP DX QSOs with SIMPLE WIRE ANTENNAS at both ends of the QSO. I think it would be great if NAQCC did that. I went through my QSL collection and found only 10 DX QSLs confirming 2-way QRP QSOs, and only three of those specifically stated that they were using simple wire antennas. I would like to see NAQCC and other QRP clubs encourage and recognize confirmed 2-way QRP contacts between continents

*(Continued on page 23)*

with both stations using simple wire antennas.

I think achieving the WAC and DXCC awards using QRP with simple wire antenna at both ends would offer a similar degree of challenge as the original WAC (initiated in the 1920s) and DXCC (initiated in 1937) awards. Today, it is no big deal to work 100 DXCC entities in a weekend if you are pumping 1500 watts into a rotatable 6-element yagi at 60 feet. But think how long it would take to work 100 DXCC entities 2-way QRP with a simple wire antenna!

From John, K3WWP, #0002 --

January provided some good ham radio activities to drive the nasty winter weather out of mind for a while, at least.

Of course our NAQCC challenges provided most of the fun. Again I mastered both our local "USA" challenge and the NAQCC European Chapter challenge. As happens so often in alphabet challenges, the letter R proved a bit hard to find and actually held up completion for about a week or so. I finally finished them on the day that Mike KC2EGL visited for our WPA Chapter get together.

Then of course as with every month, our NAQCC sprint was another great activity notwithstanding very poor conditions that kept scores down for just about everyone.

I had a couple other projects going along with a very high local noise level for our NAQCC 160M sprint so I only put in a token 10 minutes or so for just two QSOs.

Another organization has a great activity going in January and for the rest of the year, in fact. I'm speaking of the ARRL observing its 100th anniversary with several on air activities. The one I'm interested in mainly is trying to work W1AW portable from each of the 50 states. For those who may not know, W1AW will operate from two different states each 7 day period throughout the year. That means each state will be activated twice during 2014. So far as of the end of January, I've worked all ten states that have been activated so far - NC WV, UT SC, NE DE, NY OK, TX, MN.

Of course as most if not all of you know, my streaks also keep me active on the bands even when no other special activities are going on. As of the same date mentioned above, my streak of at least one QRP/CW/ simple wire antenna QSO per day reached 7,120 days. A more recently started streak of making at least one DX (non-W/VE) QSO per day reached 337 days in a row now as I shoot for 365 days which should come on February 28 if I don't miss a day.

There was one other particularly interesting special event station that I worked - DM45SCHUMI. It was a 'get well' station dedicated to Formula 1 racer Michael Schumacher who suffered serious head injuries while skiing near the end of December.

I think that shows that there is always something to keep oneself getting on the air each day, even if it is just to get on and chat with someone using Morse Code.







Complete information about the NAQCC, including a membership application, activities schedule, and extensive contact list is available on our website at

<http://naqcc.info/index.html>.

Questions can also be sent to Vice President John Shannon  
478 E. High Street  
Kittanning, PA 16201  
[naqcc33@windstream.net](mailto:naqcc33@windstream.net)

## CLUB INFORMATION AND STATEMENT OF PURPOSE

by Founding President Tom Mitchell, WY3H

We realize that QRP and CW operation do not appeal to everyone. We have no "axe to grind" with the QRO (high power) fraternity. We recognize that there are times when QRO operation is invaluable. During disasters such as floods, hurricanes, tornadoes, earthquakes or terrorist attacks, radio amateurs provide vital, life-saving communications for which QRO operation is often necessary. QRO operators also provide an invaluable public service in health and welfare traffic and routine traffic handling.

Amateur radio has something for everyone, including SSB, other forms of digital communication and AM and FM operation. However, for a small but dedicated group, QRP (and QRPP) CW operation provides the greatest challenge and thrill amateur radio has to offer.

Each month the club will host a different challenge such as the GAW (Get Acquainted Week) or the Turkey challenge (making words relating to Thanksgiving from letters in callsigns of stations worked). Also we will have a 2 hour sprint each month alternating between Tuesday and Wednesday evenings with a bonus multiplier for using a straight key.

In addition to QRP CW operation, the club encourages (but does not limit operators to) the use of simple wire antennas. The club offers free membership to any licensed radio amateur (or shortwave listener) anywhere in the world who is willing to use and promote QRP (or QRPP) CW for at least part of their operating time.

We don't have all the answers, but we are willing to answer questions concerning QRP and CW operation from newcomers to the hobby and veteran amateurs alike. Let's put the thrill back into amateur radio and work together to encourage everyone to just give it a try.

We welcome all who share our view to join us and become part of an elite amateur radio fraternity.



The NAQCC Newsletter is edited by Paul Huff, N8XMS. You may contact him at [Paul142857@gmail.com](mailto:Paul142857@gmail.com)

